

LOC/DME I-ONA 109.35 Chan 30(Y)	APP CRS 300°	Rwy Idg TDZE Apt Elev	5199 656 656
--	------------------------	-----------------------------	---

ILS Y or LOC Y RWY 30

WINONA MUNI/MAX CONRAD FLD (ONA)

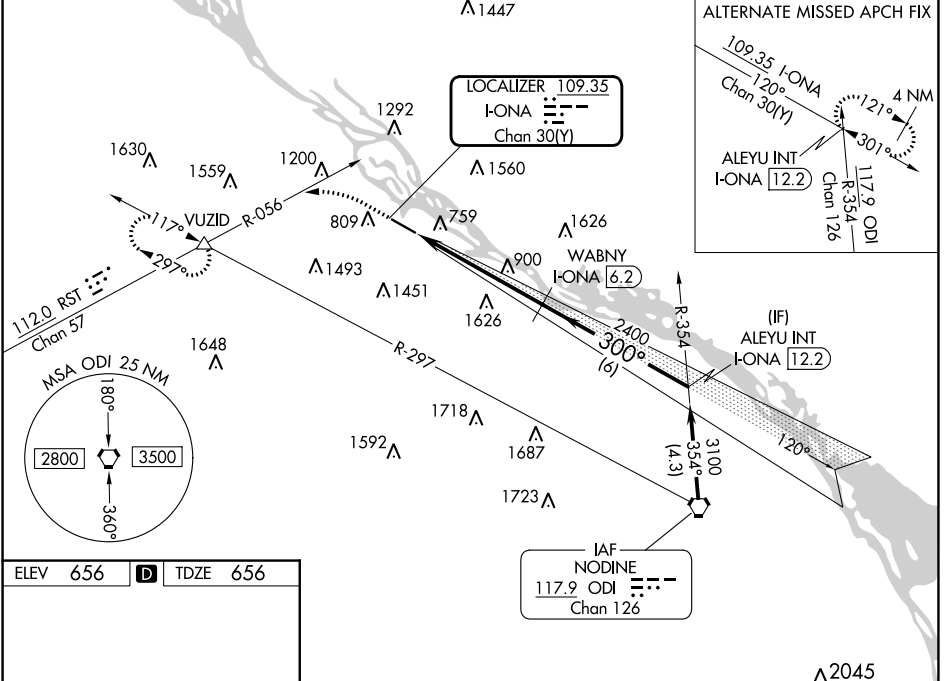
DME required.

V VDP NA with La Crosse altimeter setting. When local altimeter setting not received, use La Crosse altimeter setting and increase S-ILS 30 DA to 1127 and all visibilities 1/8 mile, increase all MDA 60 feet, and visibility S-ILS 30 Cat C/D 1/8 mile, and Circling Cat B 1/4 mile. For inop ALS, increase S-ILS 30 all Cats visibility to 1 1/8 mile, increase S-LOC 30 Cats C/D visibility to 1 1/8 mile. For inop ALS when using La Crosse altimeter setting, increase S-ILS 30 all Cats visibility to 1 1/8 mile, increase S-LOC 30 Cats C/D visibility to 1 1/8 mile.

MALSR

MISSED APPROACH:
Climb to 1800 then climbing left turn to 3000 on RST VOR/DME R-056 to VUZID INT and hold.

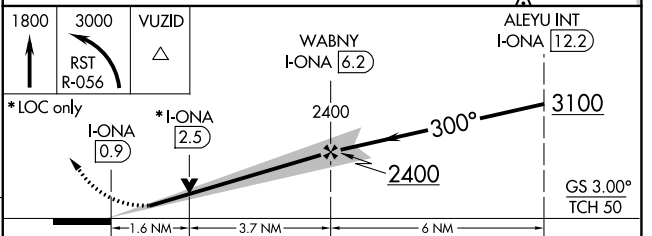
AWOS-3 118.075	MINNEAPOLIS CENTER 128.6 363.0	UNICOM 122.8 (CTAF)
--------------------------	--	-------------------------------



ELEV 656 **D** TDZE 656

REIL Rwy 12 **L**

MIRL Rwy 12-30 **L**



CATEGORY	A	B	C	D
S-ILS 30	1074-1 1/8 418 (500-1 1/8)			
S-LOC 30	1220-1/2	564 (600-1/2)	1220-1/4	564 (600-1/4)
C CIRCLING	1560-1 1/4 904 (1000-1 1/4)	1600-1 1/4 944 (1000-1 1/4)	1780-3 1124 (1200-3)	1980-3 1324 (1400-3)