

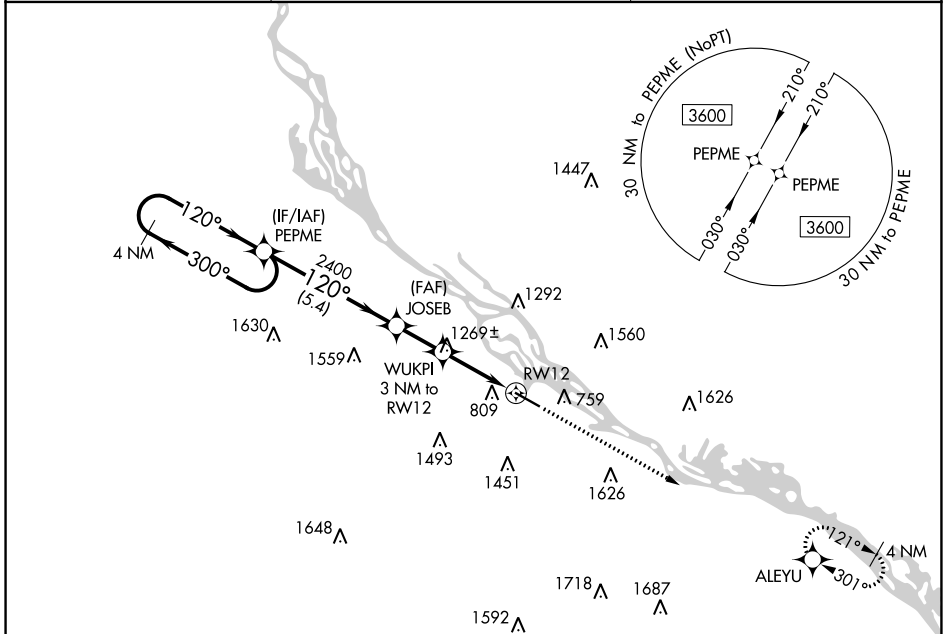
APP CRS	Rwy ldg	<b>5199</b>
<b>120°</b>	TDZE	<b>656</b>
	Apt Elev	<b>656</b>

# RNAV (GPS) RWY 12

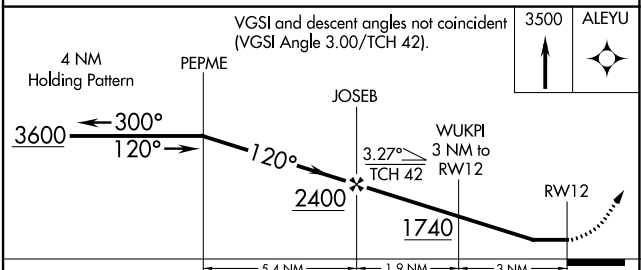
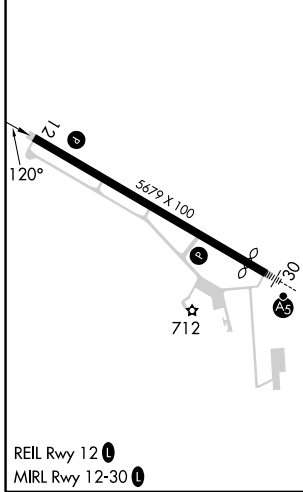
WINONA MUNI/MAX CONRAD FLD (ON A)

<p><b>⚠</b> Rwy 12 helicopter visibility reduction below 3/4 NA. DME/DME RNP-0.3 NA.</p> <p><b>❄</b> -29°C</p>	<p>MISSED APPROACH: Climb to 3500 direct ALEYU and hold.</p>
--	--

<p>AWOS-3 <b>118.075</b></p>	<p>MINNEAPOLIS CENTER <b>128.6 363.0</b></p>	<p>UNICOM <b>122.8 (CTAF) ①</b></p>
----------------------------------	--	---



ELEV 656	<b>D</b>	TDZE 656
----------	----------	----------



CATEGORY	A	B	C	D
LNAV MDA	1520-1 864 (900-1)	1520-1¼ 864 (900-1¼)	1520-2½ 864 (900-2½)	864 (900-2½)
<b>C</b> CIRCLING	1560-1¼ 904 (1000-1¼)	1580-1¼ 924 (1000-1¼)	1780-3 1124 (1200-3)	1980-3 1324 (1400-3)

# RNAV (GPS) RWY 12

NC-1, 26 DEC 2024 to 23 JAN 2025

NC-1, 26 DEC 2024 to 23 JAN 2025