

24361

AIRPORT DIAGRAM

AL-5092 (FAA)

FALLS INTL/EINARSON FLD (INL)
INTERNATIONAL FALLS, MINNESOTA

ASOS
120.0
CTAF/UNICOM
122.8
D

48°34.5'N

48°34.0'N

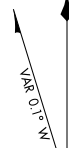
48°33.5'N

93°24.5'W

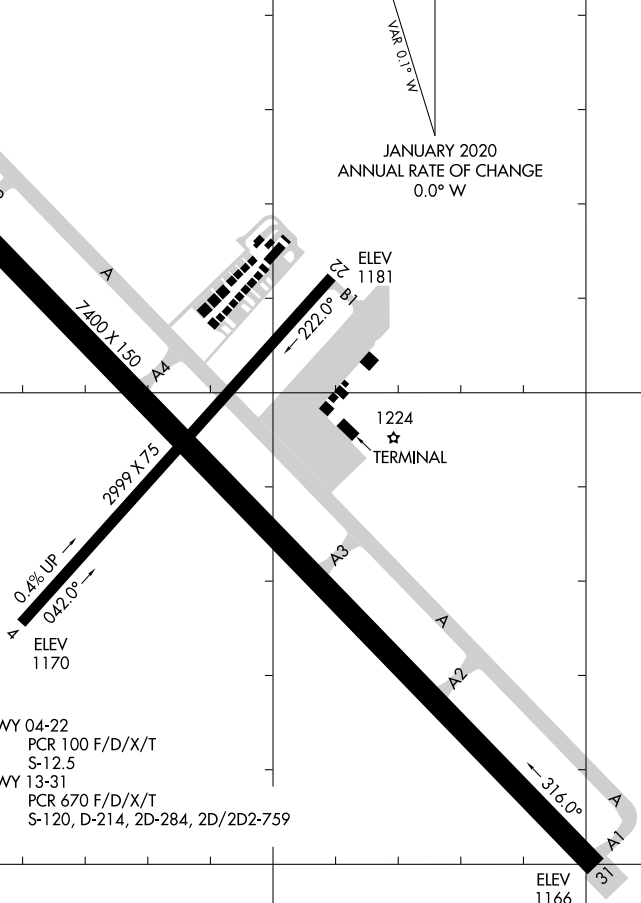
93°24.0'W

93°23.5'W

FIELD
ELEV
1184



JANUARY 2020
ANNUAL RATE OF CHANGE
0.0° W



RWY 04-22
PCR 100 F/D/X/T
S-12.5

RWY 13-31
PCR 670 F/D/X/T
S-120, D-214, 2D-284, 2D/2D2-759

NC-1, 26 DEC 2024 to 23 JAN 2025

NC-1, 26 DEC 2024 to 23 JAN 2025

AIRPORT DIAGRAM

24361

INTERNATIONAL FALLS, MINNESOTA
FALLS INTL/EINARSON FLD (INL)