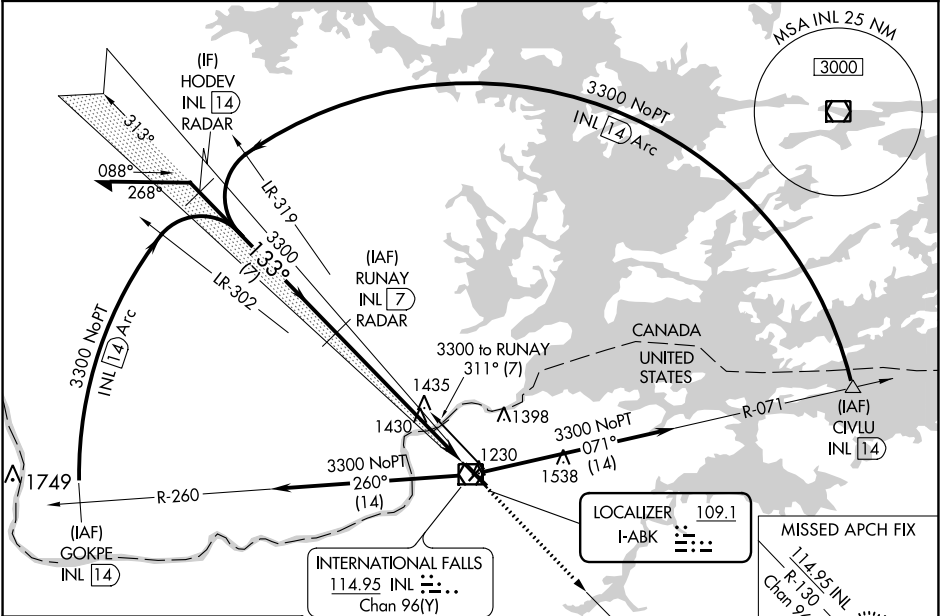


LOC I-ABK 109.1	APP CRS 133°	Rwy Idg TDZE Apt Elev	7400 1184 1182
---------------------------	------------------------	-----------------------------	---

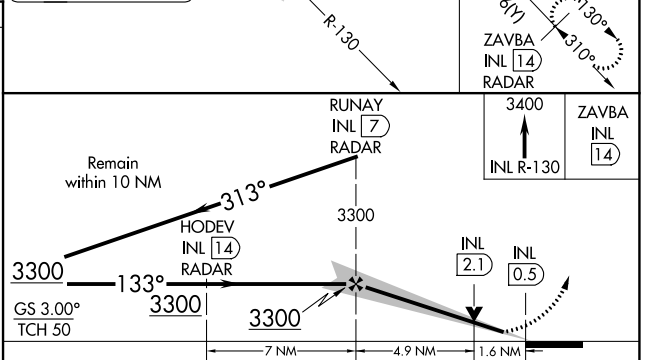
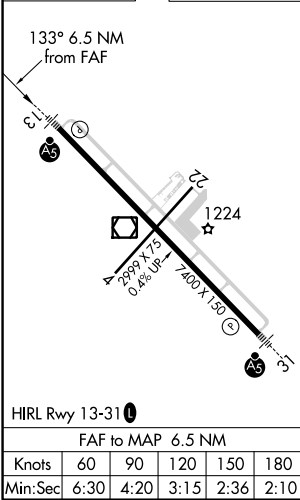
ILS or LOC RWY 13

FALLS INTL/EINARSON FLD (INL)

DME or RADAR required.		MALSR 	MISSED APPROACH: Climb to 3400 on INL VOR/DME R-130 to ZAVBA/INL 14 DME/RADAR and hold.
NA	Circling Rwy 4, 22 NA at night. Caution opposing ILS continuously on. DME from INL VOR/DME. DME use requires simultaneous reception of I-ABK and INL DME.		
ASOS 120.0	MINNEAPOLIS CENTER 120.9 377.1	UNICOM 122.8 (CTAF)	



ELEV 1182	D	TDZE 1184
-----------	----------	-----------



CATEGORY	A	B	C	D
S-ILS 13	1384-1/2 200 (200-1/2)			
S-LOC 13	1760-1/2	576 (600-1/2)	1760-1/4	576 (600-1/4)
C CIRCLING	1760-1	578 (600-1)	1900-2 718 (800-2)	1900-2 1/4 718 (800-2 1/4)

NC-1, 26 DEC 2024 to 23 JAN 2025

NC-1, 26 DEC 2024 to 23 JAN 2025