

|                         |                        |  |
|-------------------------|------------------------|--|
| VOR TBN<br><b>110.0</b> | APP CRS<br><b>138°</b> | Rwy Idg<br><b>5535</b><br>TDZE<br><b>1158</b><br>Apt Elev<br><b>1160</b> |
|-------------------------|------------------------|--|

# VOR RWY 15

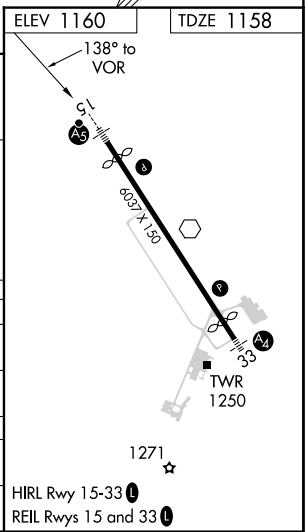
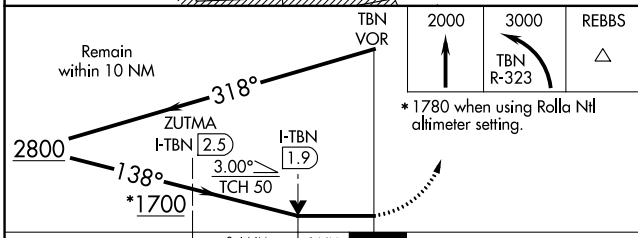
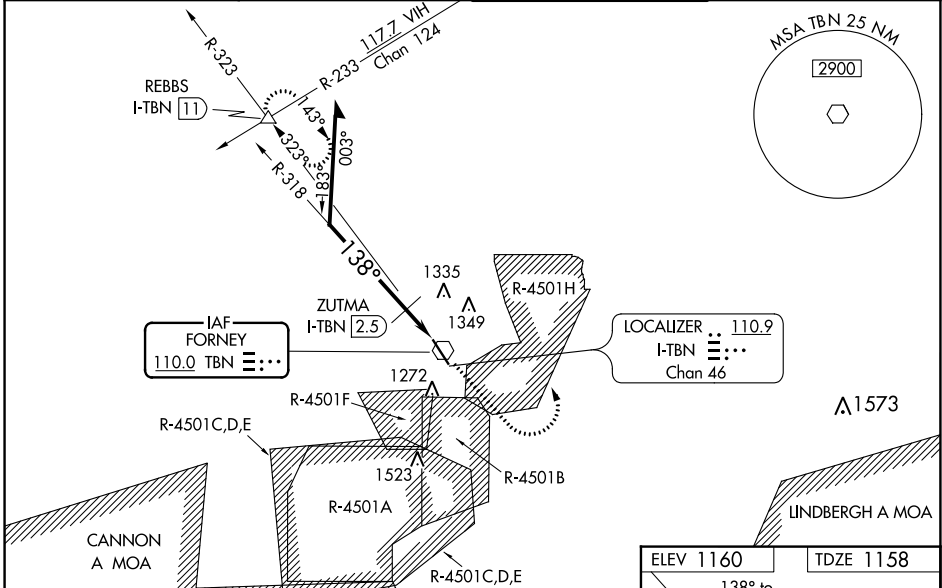
WAYNESVILLE-ST ROBERT RGNL FORNEY FLD (TBN)

**⚠** Procedure NA when R-4501B or R-4501H in use. Inop table does not apply to S-15 Cat A and B or to ZUTMA fix minimums. Circling NA west of Rwy 15-33. When local altimeter setting not received, use Rolla Nil altimeter setting and increase all MDAs 80 feet and increase S-15 visibility Cats C/D 1/4 SM and Circling Cat C visibility 1/8 SM. Inop table does not apply to Cats A/B when using Rolla Nil altimeter setting. For inop ALS when using Rolla Nil altimeter setting increase S-15 Cats C/D visibility to 1 3/4 SM. For inop ALS when using Rolla Nil altimeter setting increase S-15 ZUTMA fix minimums Cats C/D visibility to 1 3/8 SM. #DME from I-TBN LOC/DME.



**MISSED APPROACH:** Climb to 2000 then climbing left turn to 3000 on TBN VOR R-323 to REBBS INT/I-TBN LOC/DME 11 DME and hold.

|                              |   |   |                                |
|------------------------------|---|---|--------------------------------|
| D-ATIS<br><b>118.7 229.4</b> | KANSAS CITY CENTER<br><b>128.35 284.675</b> | FORNEY TOWER ★<br><b>125.4 (CTAF) 0 268.7</b> | GND CON<br><b>123.75 256.8</b> |
|------------------------------|---|---|--------------------------------|



| CATEGORY             | A           | B           | C               | D               |
|----------------------|-------------|-------------|-----------------|-----------------|
| S-15                 | 1700-1      | 542 (600-1) | 1700-1 1/8      | 542 (600-1 1/8) |
| <b>C</b> CIRCLING    | 1700-1      | 540 (600-1) | 1700-1 5/8      | 1720-2          |
| ZUTMA FIX MINIMUMS # |             |             |                 |                 |
| S-15                 | 1520-1      |             | 362 (400-1)     |                 |
| <b>C</b> CIRCLING    | 1580-1      | 1660-1      | 1660-1 1/2      | 1720-2          |
|                      | 420 (500-1) | 500 (500-1) | 500 (500-1 1/2) | 560 (600-2)     |

# VOR RWY 15

NC-3, 26 DEC 2024 to 23 JAN 2025

NC-3, 26 DEC 2024 to 23 JAN 2025