

VOR TBN <b>110.0</b>	APP CRS <b>329°</b>	Rwy Idg TDZE Apt Elev	<b>5510</b> <b>1153</b> <b>1160</b>
-------------------------	------------------------	-----------------------------	---

# VOR RWY 33

WAYNESVILLE-ST ROBERT RGNL FORNEY FLD (TBN)

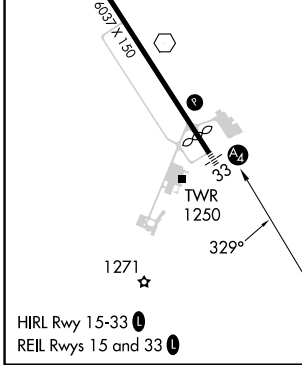
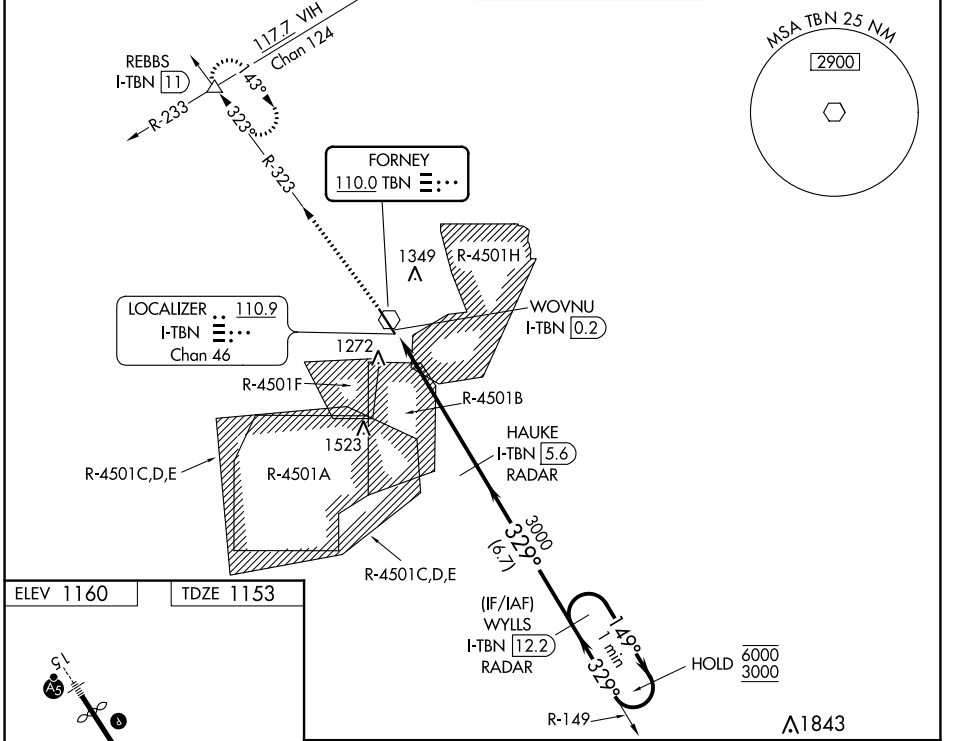
DME or RADAR required. RADAR required for procedure entry.

**⚠** When local altimeter not received, use Rolla MSL altimeter setting and increase all MDAs 80 feet. Increase S-33 Cats C/D visibility to 1¼ SM. Procedure NA when R-4501B or R-4501H in use. Circling NA west of Rwy 15-33. Rwy 33 helicopter visibility reduction below ¾ SM NA. Inop table does not apply to Cats A and B. For inop ALS, increase Cats C and D visibility to 1¾ SM. Inop table does not apply to Cats A and B when using Rolla MSL altimeter setting.

**MALS**

**MISSED APPROACH:** Climb to 3000 on TBN VOR R-323 to REBBS INT/I-TBN LOC/DME 11 DME and hold.

D-ATIS <b>118.7 229.4</b>	KANSAS CITY CENTER <b>128.35 284.675</b>	FORNEY TOWER ★ <b>125.4 (CTAF) 0 268.7</b>	GND CON <b>123.75 256.8</b>
------------------------------	---	---	--------------------------------



3000 TBN R-323 REBBS I-TBN DME ANTENNA WOVNU I-TBN 0.2 I-TBN 1.2 HAUKE I-TBN 5.6 WYLLS I-TBN 12.2 One Minute Holding Pattern 3000 → 149° → 6000 ← 329° ← 3000 3.00° TCH 36 1.3 NM    4.4 NM    6.7 NM	HAUKE I-TBN 5.6 RADAR	WYLLS I-TBN 12.2 RADAR		
	CATEGORY S-33	A	B	C
CIRCLING	1600-1 440 (500-1)	1660-1 500 (500-1)	1660-1½ 500 (500-1½)	1720-2 560 (600-2)

# VOR RWY 33

NC-3, 26 DEC 2024 to 23 JAN 2025

NC-3, 26 DEC 2024 to 23 JAN 2025