


| | | | |
|---------------------------|------------------------|-----------------------------|---|
| LOC I-FCM 109.7 | APP CRS 098° | Rwy Idg TDZE Apt Elev | 5001 906 906 |
|---------------------------|------------------------|-----------------------------|---|

ILS or LOC RWY 10R

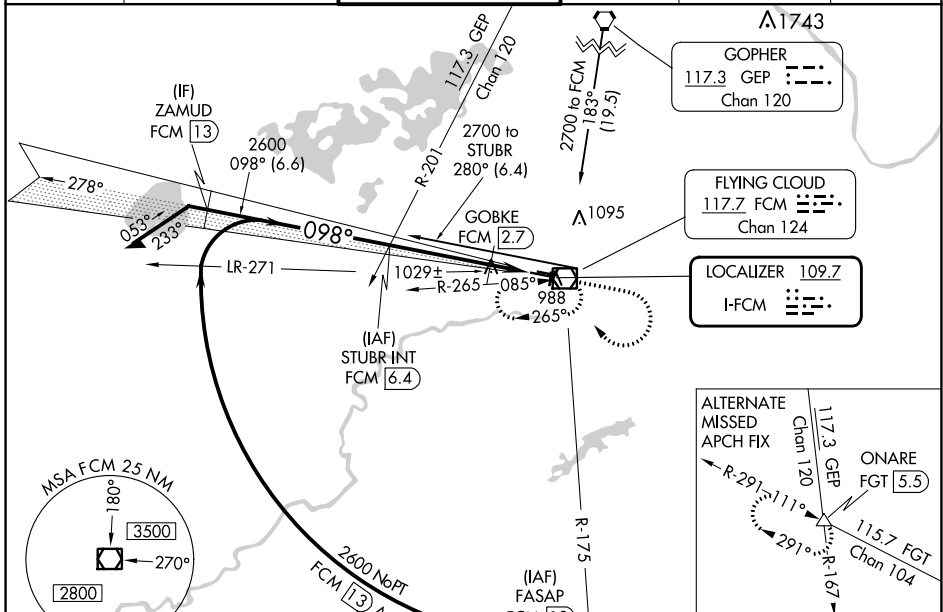
FLYING CLOUD (FCM)

⚠ When local altimeter setting not received, use Minneapolis-St Paul Intl/Wold Chamberlain altimeter setting and increase all DA 34 feet and all MDA 40 feet, increase S-LOC Cat C and D visibility ¼ mile, GOBKE fix minimums: Increase S-LOC Cat C visibility ¼ mile. When Circling to Rwy 18, 36 at night, operational VGSI required, remain on or above VGSI glidepath until threshold.

MALSR 

MISSED APPROACH: Climb to 1800 then climbing right turn to 2700 direct FCM VOR/DME and hold, continue climb-in-hold to 2700.

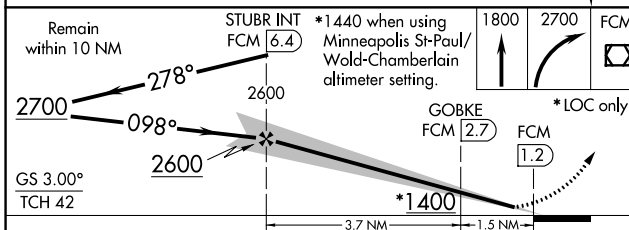
| | | | | | |
|----------------------|---|--|-------------------------|---|-------------------------|
| ATIS 124.9 | MINNEAPOLIS APP CON 134.7 284.7 | FLYING CLOUD TOWER * 119.15 (CTAF) | GND CON 121.7 | CLNC DEL 121.7 (When twr closed) | UNICOM 122.95 |
|----------------------|---|--|-------------------------|---|-------------------------|



NC-1, 26 DEC 2024 to 23 JAN 2025

NC-1, 26 DEC 2024 to 23 JAN 2025

| | |
|----------|----------|
| ELEV 906 | TDZE 906 |
|----------|----------|



| CATEGORY | A | B | C | D |
|-----------------------------------|-----------------------|-----------------------|-------------------------|-----------------------|
| S-ILS 10R | | 1106-½ | 200 (200-½) | |
| S-LOC 10R | 1400-½ | 494 (500-½) | 1400-¾ 494 (500-¾) | 1400-1 494 (500-1) |
| C CIRCLING | 1400-1 494 (500-1) | 1440-1 534 (600-1) | 1440-1½ 534 (600-1½) | 1540-2 634 (700-2) |
| GOBKE FIX MINIMUMS (DME REQUIRED) | | | | |
| S-LOC 10R | | 1280-½ | 374 (400-½) | 1280-¾ 374 (400-¾) |
| C CIRCLING | 1320-1 414 (500-1) | 1440-1 534 (600-1) | 1440-1½ 534 (600-1½) | 1540-2 634 (700-2) |

Diagram details: 098° heading, HIRL Rwy 10R-28L, REIL Rwy 10L and 28R, REIL Rwy 18, 28L, and 36, MRL Rwy 10L-28R, MRL Rwy 18-36, TWR 988± 36, 3901 X 75, 5001 X 100, 28L, 28R, 28L, 28R, 28L, 28R, 28L, 28R.

| | | | | | |
|-------------------|------|------|------|------|------|
| FAF to MAP 5.2 NM | | | | | |
| Knots | 60 | 90 | 120 | 150 | 180 |
| Min:Sec | 5:12 | 3:28 | 2:36 | 2:05 | 1:44 |