

| | | | |
|--|------------------------|-----------------------------|---|
| WAAS CH 90218 W28B | APP CRS 278° | Rwy Idg TDZE Apt Elev | 5001 906 906 |
|--|------------------------|-----------------------------|---|

RNAV (GPS) RWY 28L

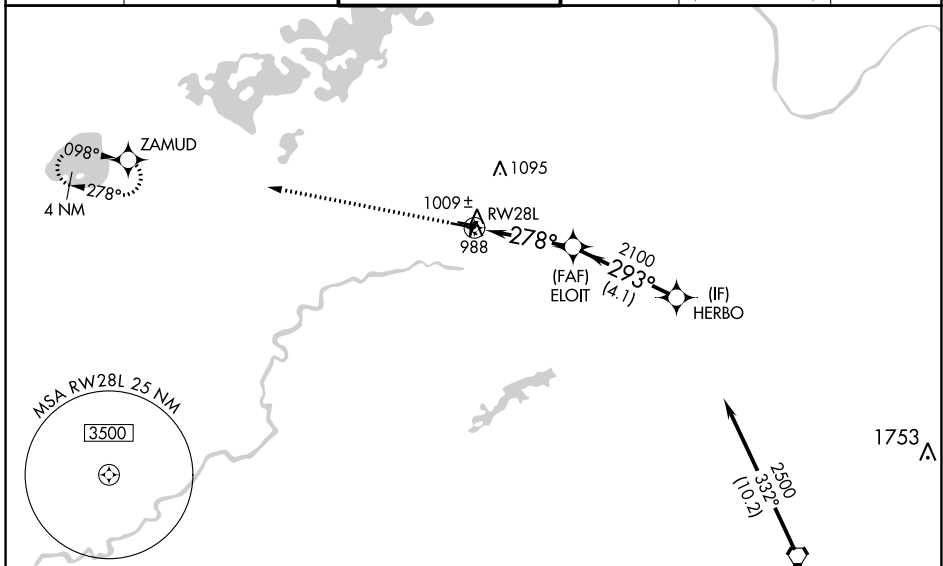
FLYING CLOUD (FCM)

RNP APCH.

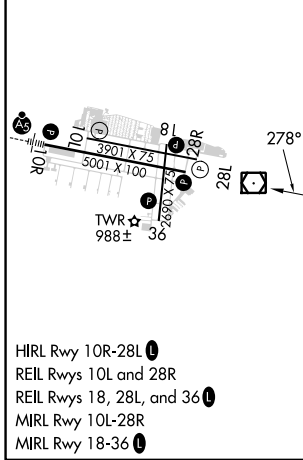
⚠ For uncompensated Baro-VNAV systems, LNAV/VNAV NA below -16°C (2°F) or above 54°C (130°F). When local altimeter setting not received, use Minneapolis-St Paul Intl/Wald-Chamberlain altimeter setting and increase all DA 34 feet and all MDA 40 feet, increase LNAV Cats C and D visibility 1/8 mile. Helicopters visibility reduction below 3/4 SM NA. When Circling to Rwy 18, 36 at night, operational VGSI required, remain on or above VGSI glidepath until threshold.

MISSED APPROACH: Climb to 2700 direct ZAMUD and hold.

| | | | | | |
|----------------------|---|--|-------------------------|---|-------------------------|
| ATIS 124.9 | MINNEAPOLIS APP CON 134.7 284.7 | FLYING CLOUD TOWER * 119.15 (CTAF) 0 | GND CON 121.7 | CLNC DEL 121.7 (When twr closed) | UNICOM 122.95 |
|----------------------|---|--|-------------------------|---|-------------------------|

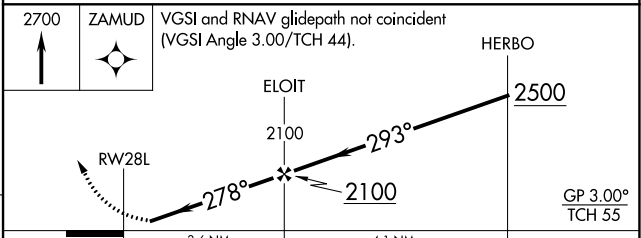


| | |
|----------|----------|
| ELEV 906 | TDZE 906 |
|----------|----------|



HIRL Rwy 10R-28L **0**
 REIL Rws 10L and 28R
 REIL Rws 18, 28L, and 36 **0**
 MIRL Rwy 10L-28R
 MIRL Rwy 18-36 **0**

Procedure NA for arrivals on FGT VORTAC
 airway radials 258 CW 011.



| CATEGORY | A | B | C | D |
|-------------------|-----------------------|-----------------------|-------------------------------|-----------------------|
| LPV DA | | 1156-1 | 250 (300-1) | |
| LNAV/VNAV DA | | 1198-1 | 292 (300-1) | |
| LNAV MDA | 1280-1 | 374 (400-1) | 1280-1 1/8 | 374 (400-1 1/8) |
| C CIRCLING | 1320-1 414 (500-1) | 1440-1 534 (600-1) | 1440-1 1/2 534 (600-1 1/2) | 1540-2 634 (700-2) |

NC-1, 26 DEC 2024 to 23 JAN 2025

NC-1, 26 DEC 2024 to 23 JAN 2025