

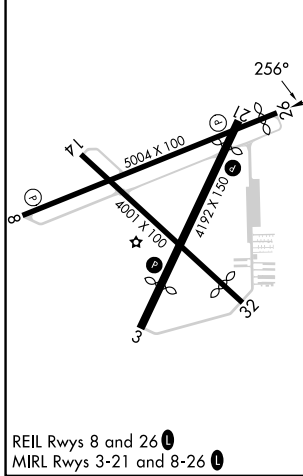
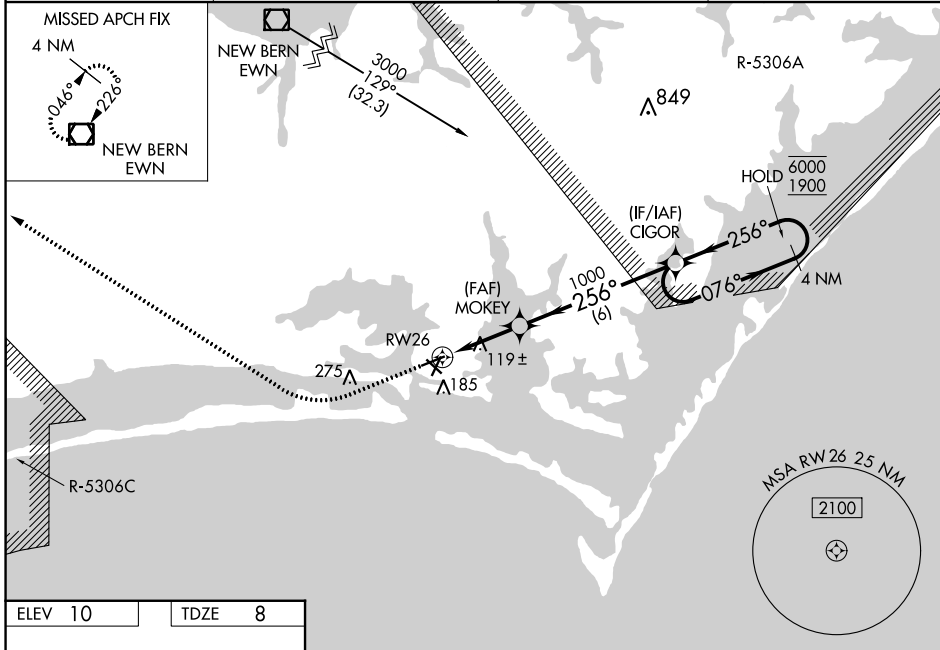
WAAS CH <b>40338</b> <b>W26A</b>	APP CRS <b>256°</b>	Rwy Idg TDZE Apt Elev	<b>4715</b> <b>8</b> <b>10</b>
--	------------------------	-----------------------------	--------------------------------------

# RNAV (GPS) RWY 26

MICHAEL J SMITH FLD (MRH)

RNP APCH - GPS.	<p><b>▽</b> Circling Rwy 8, 14, 32 NA at night. Rwy 26 helicopter visibility reduction below <math>\frac{3}{4}</math> SM NA. For uncompensated Baro-VNAV systems, LNAV/VNAV NA below -5°C or above 54°C. ATC clearance required to penetrate R-5306A and R-5306C.</p> <p><b>▲</b> MISSED APPROACH: Climb to 500 then climbing right turn to 3000 direct EWN VOR/DME and hold.</p>
-----------------	---

ASOS <b>135.375</b>	CHERRY POINT APP CON <b>132.575 299.6</b>	CLNC DEL <b>125.65</b>	UNICOM <b>122.8 (CTAF) 0</b>
------------------------	--	---------------------------	---------------------------------



SE-2, 26 DEC 2024 to 23 JAN 2025

SE-2, 26 DEC 2024 to 23 JAN 2025