

RNAV (GPS) RWY 16

APCH CRS	Rwy ldg	3913
158°	TDZE	328
	Arprt Elev	330

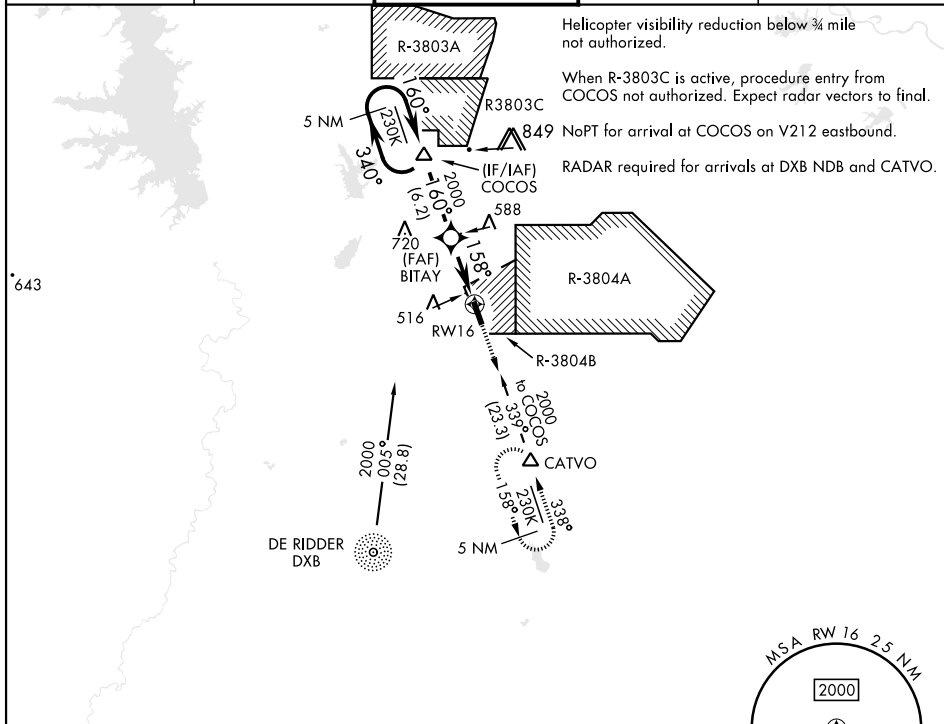
[USA]

MAKS AAF (KPOE)

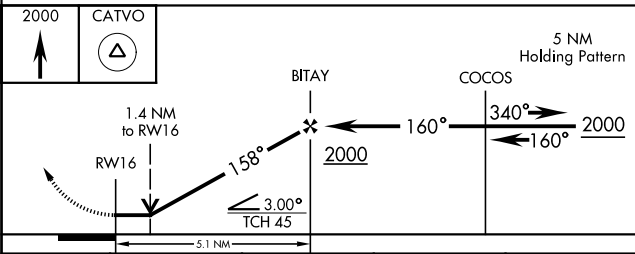
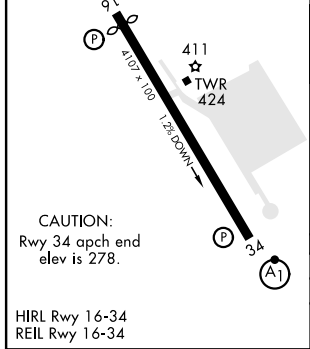
RNP APCH - GPS

MISSED APPROACH: Climb to 2000 direct CATVO and hold.

ATIS	APP CON	TOWER*	GND CON	ASR/PAR
134.85 282.2	123.7 261.3	119.0 (CTAF) 257.75	121.8 239.25	



ELEV	330	TDZE	328
Rwy 16 ldg 3913'		158°	



CATEGORY	A	B	C	D
LNAV MDA	800-1 472 (500-1)	800-1 3/8 472 (500-1 3/8)		
CIRCLING	880-1 550 (600-1)	880-1 1/2 550 (600-1 1/2)	940-2 610 (700-2)	

RNAV (GPS) RWY 16

SC-4, 26 DEC 2024 to 23 JAN 2025

SC-4, 26 DEC 2024 to 23 JAN 2025