

LOC I-DLX <b>111.3</b>	APP CRS <b>191°</b>	Rwy Idg <b>11089</b> TDZE <b>272</b> Apt Elev <b>312</b>
---------------------------	------------------------	--

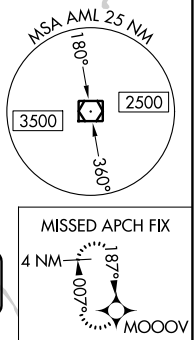
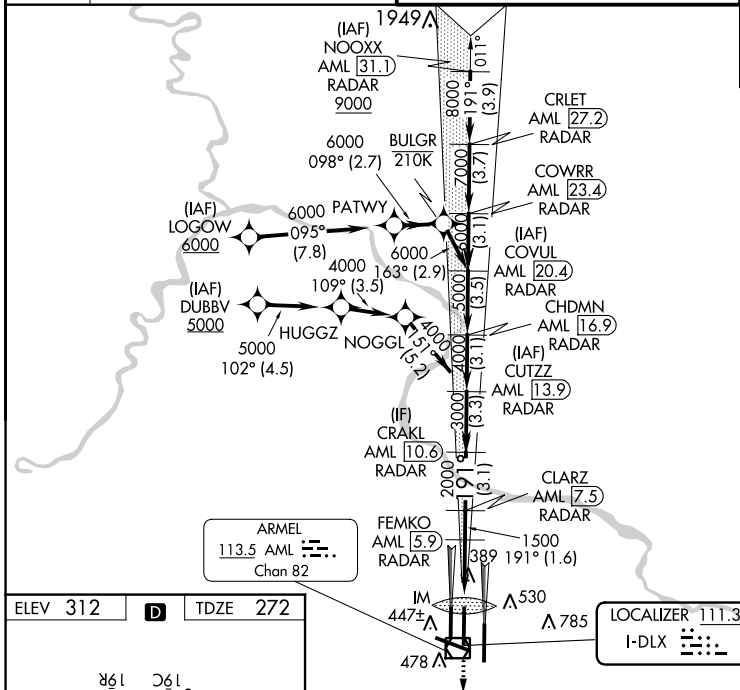
# ILS RWY 19C (CAT II & III)

WASHINGTON DULLES INTL (IAD)

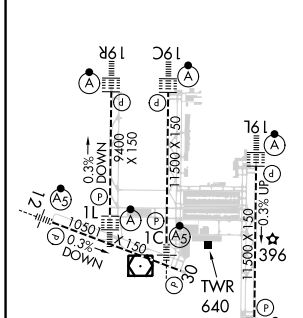
RNP APCH - GPS. RADAR required for procedure entry at NOOXX. DME or RADAR required.		ALSF-2 	MISSED APPROACH: Climb to 3000 direct MOOOV and hold.
Simultaneous approach authorized. DME from AML VOR/DME. DME use requires simultaneous reception of I-DLX and AML DME.			

D-ATIS <b>134.85</b>	POTOMAC APP CON <b>120.45 306.925</b> (241°-330°) <b>128.525 306.925</b> (091°-240°) <b>126.1 338.25</b> (331°-090°)	DULLES TOWER <b>120.1 317.8</b> (Rwy 1R/19L) <b>120.25 348.6</b> (Rwy 1C/19C) <b>134.425 348.6</b> (Rwys 1L/19R and 12/30)	GND CON <b>121.9 317.8</b> (EAST) <b>121.625 348.6</b> (WEST)
-------------------------	---	---	---

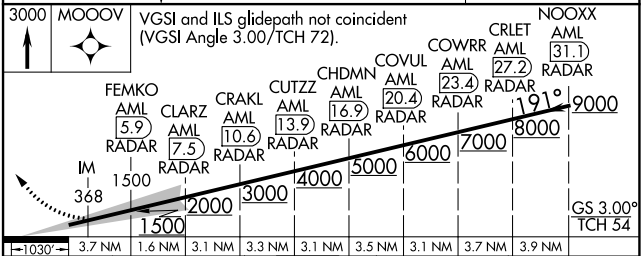
CLNC DEL <b>135.7 317.8</b>	CPDLC
--------------------------------	-------



ELEV 312	<b>D</b>	TDZE 272
----------	----------	----------



REIL Rwy 30  
HIRL all Rwys  
TDZ/CL Rwys 1C, 1L, 1R,  
12, 19C and 19R



1.030°	3.7 NM	3.1 NM	3.3 NM	3.1 NM	3.5 NM	3.1 NM	3.7 NM	3.9 NM
CATEGORY	A		B			C		D
S-ILS 19C	CAT II RA 110/12 100 DA 372							
S-ILS 19C	CAT IIIa RVR 07							
S-ILS 19C	CAT IIIb RVR 06							
S-ILS 19C	CAT IIIc NA							

## CATEGORY II & III ILS - SPECIAL AIRCREW & AIRCRAFT CERTIFICATION REQUIRED