

LOC/DME I-SGC 110.1 Chan 38	APP CRS 191°	Rwy ldg 11500 TDZE 302 Apt Elev 312
---	------------------------	--

ILS RWY 19L (SA CAT II)

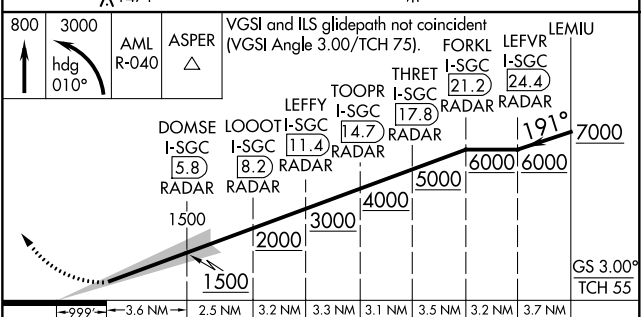
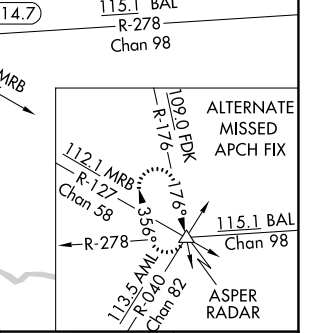
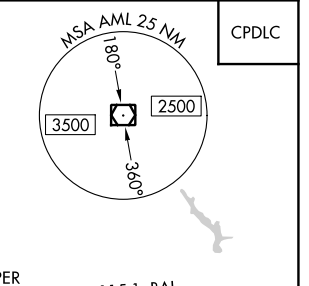
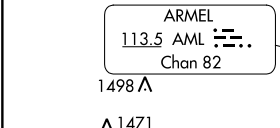
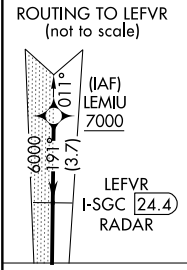
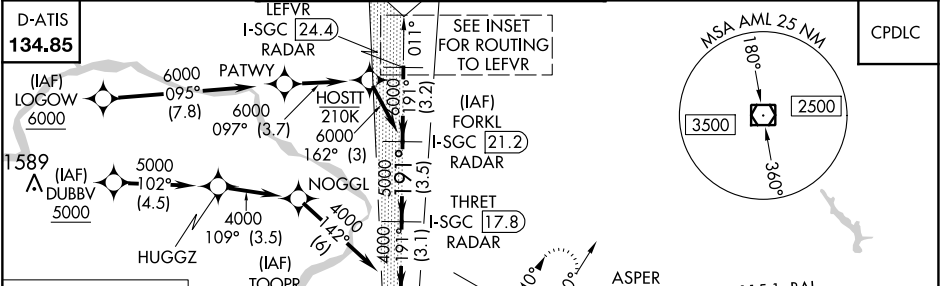
WASHINGTON DULLES INTL (IAD)

RNP APCH - GPS. From LOGOW, or DUBBV, or LEMIU.
DME or RADAR required. RADAR required for procedure entry at LEMIU.
Simultaneous approach authorized.
Requires specific OPSPEC, MSP/EC, or LOA approval.

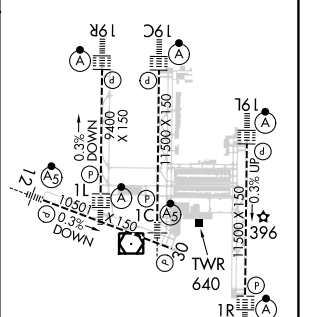


MISSED APPROACH: Climb to 800 then climbing left turn to 3000 on heading 010° and on AML VOR/DME R-040 to ASPER INT/AML 14.7 DME and hold.

POTOMAC APP CON 120.45 306.925 (241°-330°) 128.525 306.925 (091°-240°) 126.1 338.25 (331°-090°)		DULLES TOWER 120.1 317.8 (Rwys 1R/19L) 120.25 348.6 (Rwys 1C/19C) 134.425 348.6 (Rwys 1L/19R and 12/30)	GND CON 121.9 317.8 (EAST) 121.625 348.6 (WEST)	CLNC DEL 135.7 317.8
---	--	---	---	--------------------------------



ELEV 312	TDZE 302
----------	----------



800	3000	AML R-040	ASPER	VGSi and ILS glidepath not coincident (VGSi Angle 3.00/TCH 75).	FORKL	LEFVR	LEMIU
↑	hdg 010°						

999	3.6 NM	2.5 NM	3.2 NM	3.3 NM	3.1 NM	3.5 NM	3.2 NM	3.7 NM
CATEGORY	A		B		C		D	
S-ILS 19L	RA 100/12 100 DA 402							

SA CATEGORY II ILS - SPECIAL AIRCREW & AIRCRAFT CERTIFICATION REQUIRED

TDZ/CL Rwys 1C, 1L, 1R, 12, 19C and 19R
REIL Rwy 30
HIRL all Rwys

NE-3, 26 DEC 2024 to 23 JAN 2025

NE-3, 26 DEC 2024 to 23 JAN 2025