


LOC I-OSZ 111.3	APP CRS 011°	Rwy ldg 11500
		TDZE 286
		Apt Elev 312

ILS RWY 1C (SA CAT II)

WASHINGTON DULLES INTL (IAD)

RNP APCH-GPS. From GNATZ or HUFFF.

DME or RADAR required. DME required for LOC only. RADAR required for procedure entry at MUDDO.

MALSR  MISSED APPROACH: Climb to 4000 on AML VOR/DME R-010 to CHDMN/AML 16.9 DME/RADAR and hold, continue climb-in-hold to 4000.

Simultaneous approach authorized. DME from AML VOR/DME. DME use requires simultaneous reception of I-OSZ and AML DME.

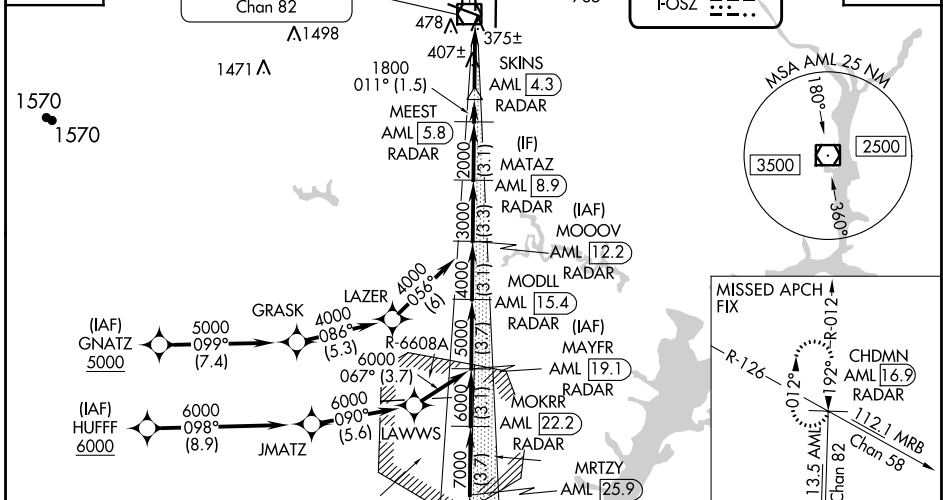
POTOMAC APP CON 120.45 306.925 (241°-330°) 128.525 306.925 (091°-240°) 126.1 338.25 (331°-090°)	DULLES TOWER 120.1 317.8 (Rwy 1R/19L) 120.25 348.6 (Rwy 1C/19C) 134.425 348.6 (Rwys 1L/19R and 12/30)	GND CON 121.9 317.8 (EAST) 121.625 348.6 (WEST)	CLNC DEL 135.7 317.8
---	---	---	--------------------------------

D-ATIS
134.85

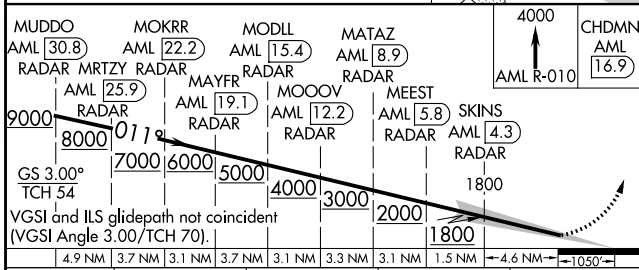
ARMEL
113.5 AML
Chan 82

LOCALIZER **111.3**
I-OSZ

CPDLC



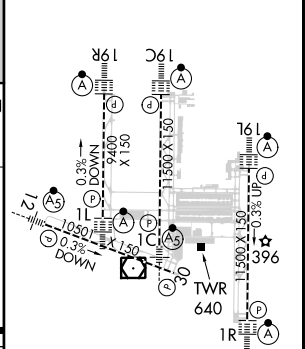
MUDDO AML 30.8 RADAR	MOKRR AML 22.2 RADAR	MODLL AML 15.4 RADAR	MATAZ AML 8.9 RADAR	CHDMN AML 16.9
MRTZY AML 25.9 RADAR	MAYFR AML 19.1 RADAR	MOOOV AML 12.2 RADAR	MEEST AML 5.8 RADAR	SKINS AML 4.3 RADAR



CATEGORY	A	B	C	D
S-ILS 1C				
	RA 104/12 100 DA 386			

SA CATEGORY II ILS - SPECIAL AIRCREW & AIRCRAFT CERTIFICATION REQUIRED

ELEV 312 **D** TDZE 286



TDZ/CL Rwys 1C, 1L, 1R, 12, 19C and 19R
REIL Rwy 30
HIRL all Rwys

NE-3, 26 DEC 2024 to 23 JAN 2025

NE-3, 26 DEC 2024 to 23 JAN 2025