

LOC/DME I-HAD 110.1 Chan 38	APP CRS 011°	Rwy ldg 11500 TDZE 312 Apt Elev 312
--	------------------------	--

ILS RWY 1R (CAT II & III)

WASHINGTON DULLES INTL (IAD)

RNP APCH-GPS. From GNATZ, or HUFFF.
DME or RADAR required.
RADAR required for procedure entry at ESPNN.
Simultaneous approach authorized.

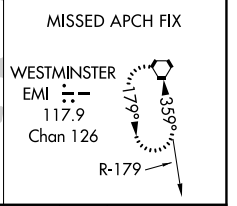
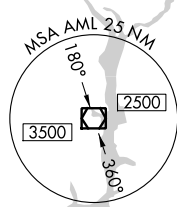
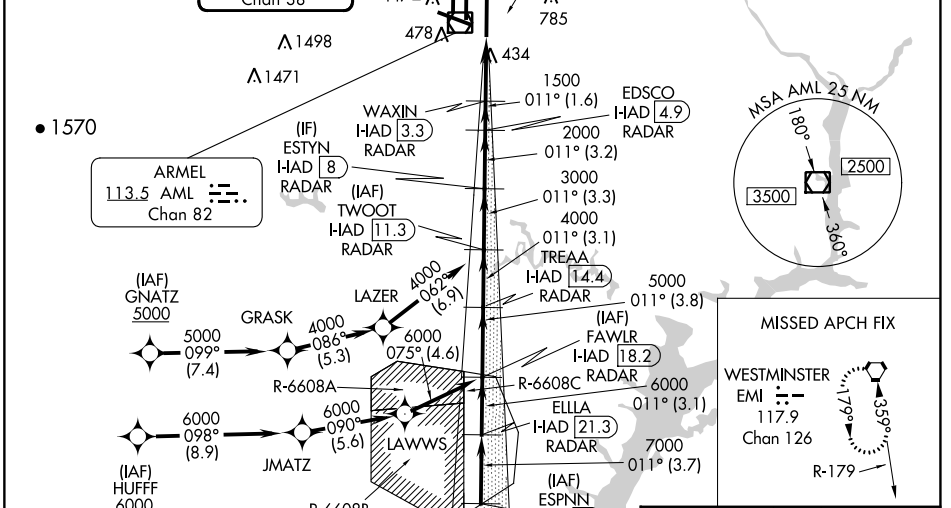
ALSF-2
MISSED APPROACH: Climb to 800 then climbing right turn to 3000 on heading 060° and EMI VORTAC R-219 to EMI VORTAC and hold.

POTOMAC APP CON 120.45 306.925 (241°-330°) 128.525 306.925 (091°-240°) 126.1 338.25 (331°-090°)	DULLES TOWER 120.1 317.8 (Rwy 1R/19L) 120.25 348.6 (Rwy 1C/19C) 134.425 348.6 (Rwys 1L/19R and 12/30)	GN D CON 121.9 317.8 (EAST) 121.625 348.6 (WEST)	CLNC DEL 135.7 317.8
---	---	--	--------------------------------

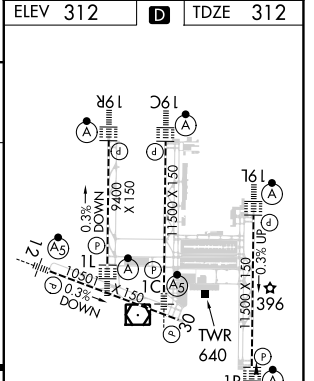
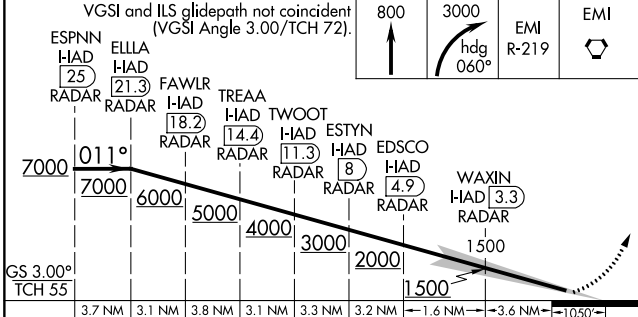
D-ATIS
134.85

LOCALIZER **110.1**
I-HAD
Chan 38

CPDLC



ELEV 312	TDZE 312
----------	----------



CATEGORY	A	B	C	D
S-ILS 1R	CAT II RA 94/12 100 DA 412			
S-ILS 1R	CAT III RVR 06			

CATEGORY II & III ILS - SPECIAL AIRCREW & AIRCRAFT CERTIFICATION REQUIRED

TDZ/CL Rwys 1C, 1L, 1R, 12, 19C and 19R
REIL Rwy 30
HIRL all Rwys

NE-3, 26 DEC 2024 to 23 JAN 2025

NE-3, 26 DEC 2024 to 23 JAN 2025