

LOC/DME I-SCG 110.1 Chan 38	APP CRS 191°	Rwy ldg 11500 TDZE 302 Apt Elev 312
---	------------------------	--

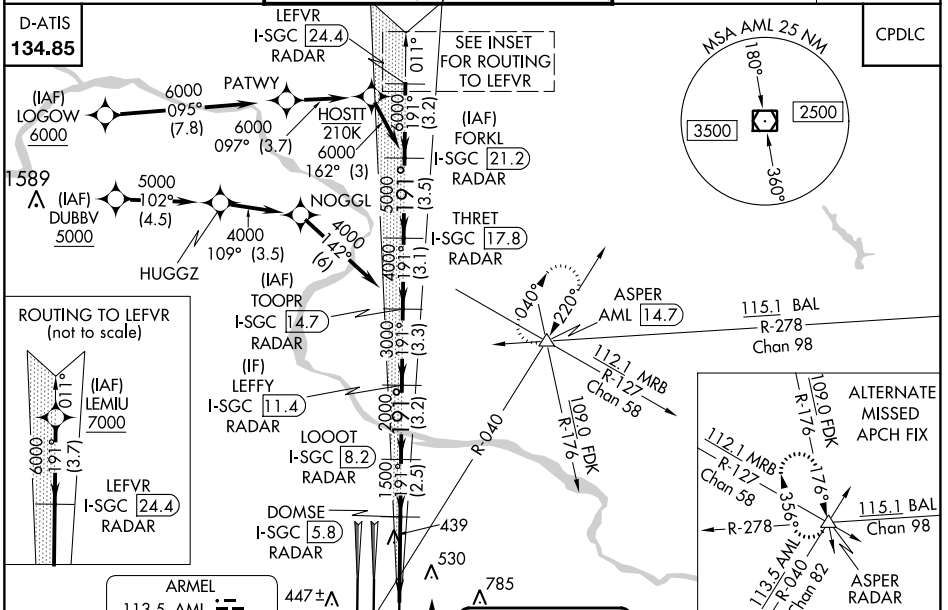
ILS or LOC RWY 19L

WASHINGTON DULLES INTL (IAD)

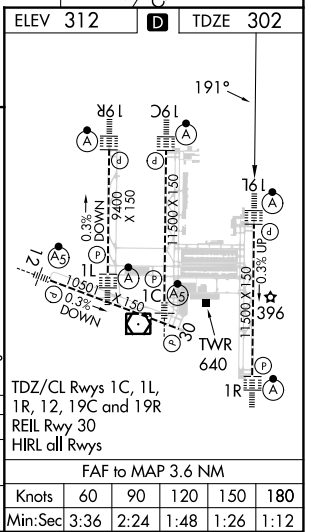
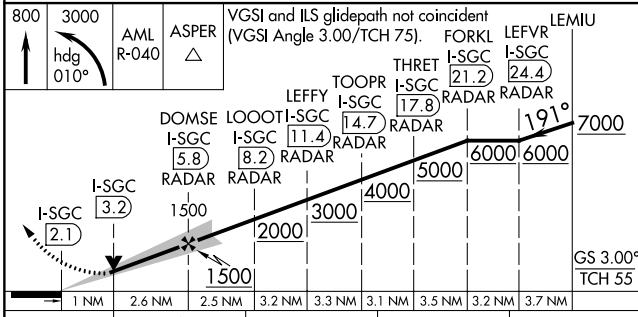
RNP APCH - GPS. From LOGOV, or DUBBV, or LEMIU.
 DME or RADAR required. RADAR required for procedure entry at LEMIU.
 Simultaneous approach authorized.
 *RVR 1800 authorized with use of FD or AP or HUD to DA.

MISSED APPROACH: Climb to 800 then climbing left turn to 3000 on heading 010° and on AML VOR/DME R-040 to ASPER INT/AML 14.7 DME and hold.

POTOMAC APP CON 120.45 306.925 (241°-330°) 128.525 306.925 (091°-240°) 126.1 338.25 (331°-090°)	DULLES TOWER 120.1 317.8 (Rwy 1R/19L) 120.25 348.6 (Rwy 1C/19C) 134.425 348.6 (Rwys 1L/19R and 12/30)	GND CON 121.9 317.8 (EAST) 121.625 348.6 (WEST)	CLNC DEL 135.7 317.8
---	---	---	--------------------------------



ARMEL 113.5 AML Chan 82	LOCALIZER 110.1 I-SCG Chan 38	ELEV 312	TDZE 302
-------------------------------	-------------------------------------	----------	----------



CATEGORY	A	B	C	D
S-ILS 19L *	502/24 200 (200-½)			
S-LOC 19L	700/24	398 (400-½)	700/35	398 (400-¾)
TDZ/CL Rwys 1C, 1L, 1R, 12, 19C and 19R REIL Rwy 30 HIRL all Rwys FAF to MAP 3.6 NM Knots: 60 90 120 150 180 Min:Sec: 3:36 2:24 1:48 1:26 1:12				

NE-3, 26 DEC 2024 to 23 JAN 2025

NE-3, 26 DEC 2024 to 23 JAN 2025