

LOC/DME I-HSU 110.75 Chan 44 (Y)	APP CRS 191°	Rwy ldg 9400
		TDZE 278
		Apt Elev 312

ILS or LOC RWY 19R

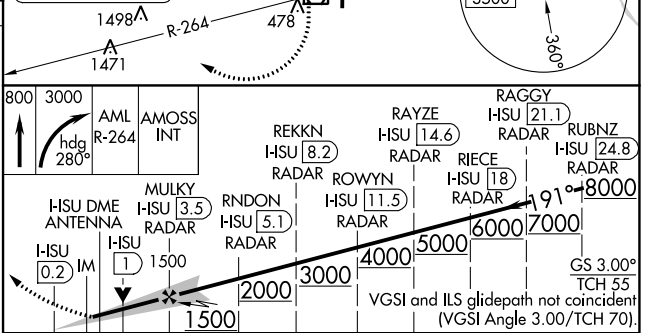
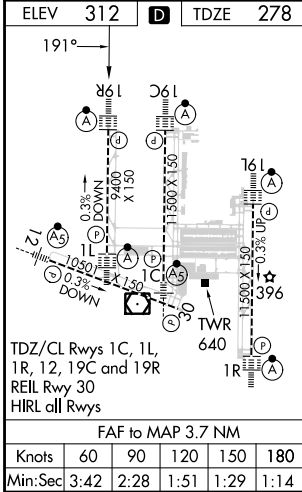
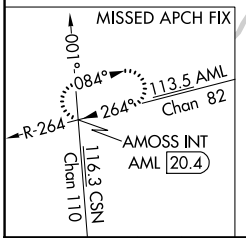
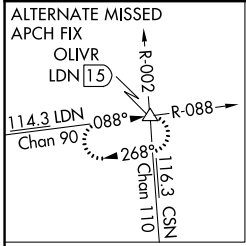
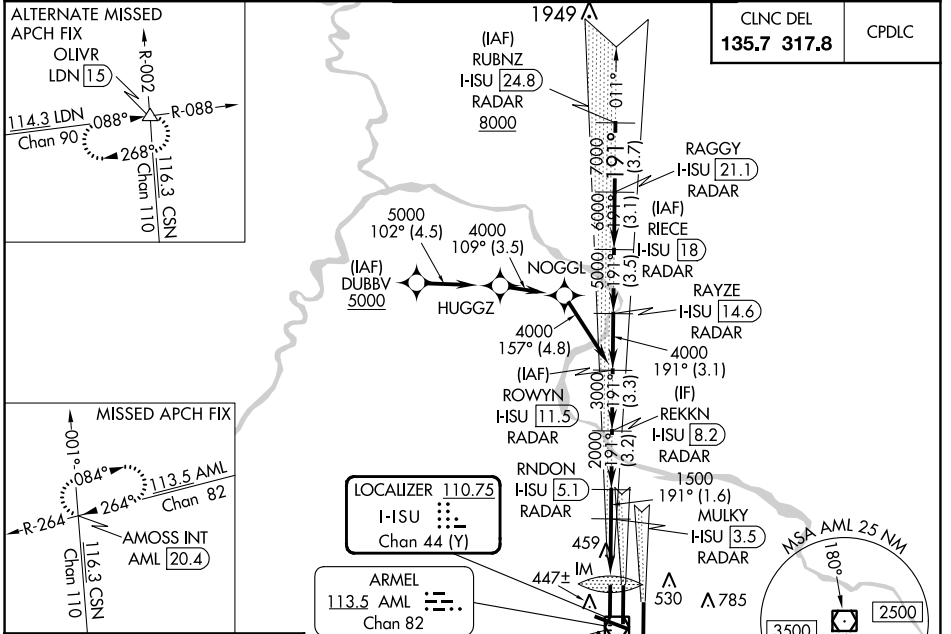
WASHINGTON DULLES INTL (IAD)

RNP APCH-GPS. From DUBBV.
DME or RADAR required. RADAR required for procedure entry at RUBNZ.

ALSF-2 MISSED APPROACH: Climb to 800 then climbing right turn to 3000 on heading 280° and AML VOR/DME R-264 to AMOSS INT/AML 20.4 DME and hold.

Simultaneous approach authorized.

D-ATIS 134.85	POTOMAC APP CON 120.45 306.925 (241°-330°) 128.525 306.925 (091°-240°) 126.1 338.25 (331°-090°)	DULLES TOWER 120.1 317.8 (Rwy 1R/19L) 120.25 348.6 (Rwy 1C/19C) 134.425 348.6 (Rwys 1L/19R and 12/30)	GND CON 121.9 317.8 (EAST) 121.625 348.6 (WEST)
-------------------------	---	---	---



0.1	1.1	2.5	1.6 NM	3.2	3.3	3.1	3.5	3.1	3.7
CATEGORY		A		B		C		D	
S-ILS 19R		478/18		200 (200-½)					
S-LOC 19R		720/24		442 (500-½)		720/45		442 (500-¾)	
CIRCLING		940-1		628 (700-1)		940-1¾		1180-2¾ 868 (900-2¾)	

NE-3, 26 DEC 2024 to 23 JAN 2025

NE-3, 26 DEC 2024 to 23 JAN 2025