

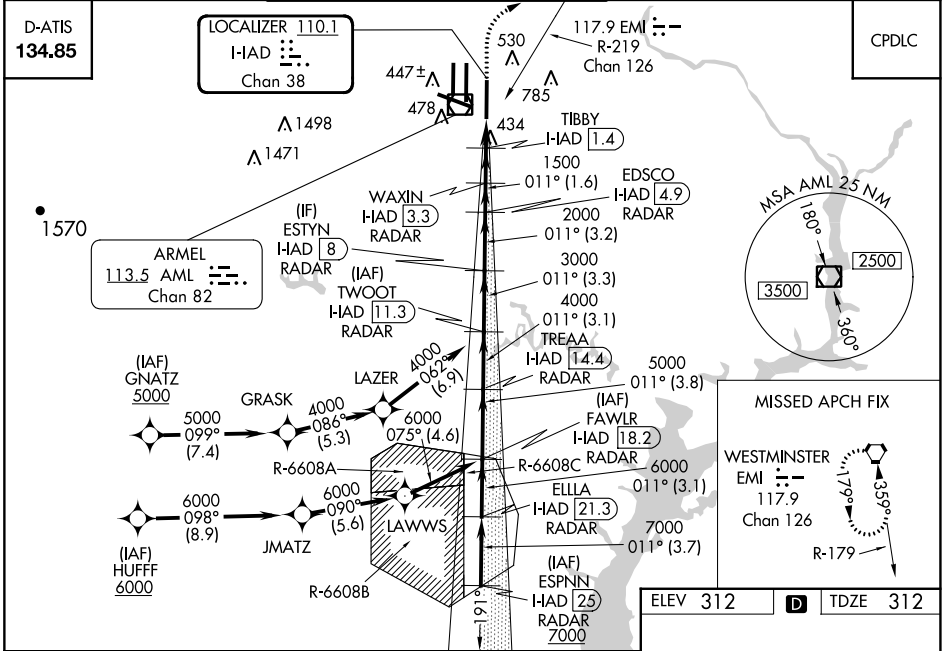
| | | |
|--|------------------------|--|
| LOC/DME I-HAD 110.1 Chan 38 | APP CRS 011° | Rwy ldg 11500 TDZE 312 Apt Elev 312 |
|--|------------------------|--|

ILS or LOC RWY 1R

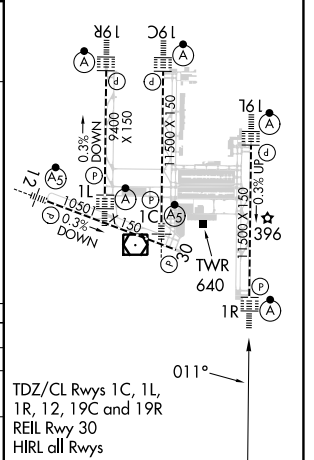
WASHINGTON DULLES INTL (IAD)

| | | |
|--|------------|---|
| RNP APCH-GPS. From GNATZ, or HUFFF. | ALSF-2 | MISSED APPROACH: Climb to 800 then climbing right turn to 3000 on heading 060° and EMI VORTAC R-219 to EMI VORTAC and hold. |
| DME or RADAR required. DME required for LOC only. RADAR required for procedure entry at ESPNN. | | |
| Simultaneous approach authorized. | | |

| | | | |
|---|---|---|--------------------------------|
| POTOMAC APP CON 120.45 306.925 (241°-330°) 128.525 306.925 (091°-240°) 126.1 338.25 (331°-090°) | DULLES TOWER 120.1 317.8 (Rwy 1R/19L) 120.25 348.6 (Rwy 1C/19C) 134.425 348.6 (Rwys 1L/19R and 12/30) | GND CON 121.9 317.8 (EAST) 121.625 348.6 (WEST) | CLNC DEL 135.7 317.8 |
|---|---|---|--------------------------------|



| | | | | |
|---|-----------------------|------------------------|-----------------------|------------------------|
| VGSi and ILS glidepath not coincident (VGSi Angle 3.00/TCH 72). | | 800 | 3000 | EMI |
| | | ↑ | hdg 060° | R-219 |
| ESPNN I-HAD 25 RADAR | ELLA I-HAD 21.3 RADAR | FAWLR I-HAD 18.2 RADAR | TREA I-HAD 14.4 RADAR | TWOOT I-HAD 11.3 RADAR |
| ESTYN I-HAD 8 RADAR | EDSCO I-HAD 4.9 RADAR | WAXIN I-HAD 3.3 RADAR | TIBBY I-HAD 1.4 RADAR | DME ANT. |
| 7000 | 7000 | 6000 | 5000 | 4000 |
| 3000 | 2000 | 1500 | 900 | |
| GS 3.00° TCH 55 | 3.7 NM | 3.1 NM | 3.8 NM | 3.1 NM |
| 3.2 NM | 3.3 NM | 3.2 NM | 1.6 NM | 1.9 NM |
| 0.7 NM | 0.8 NM | 0.2 NM | | |
| CATEGORY | A | | B | |
| S-ILS 1R | 512/18 | | 200 (200-½) | |
| S-LOC 1R | 700/24 388 (400-½) | | 700/35 388 (400-¾) | |
| CIRCLING | 940-1 628 (700-1) | | 940-1¾ 628 (700-1¾) | |
| | | | 1180-2¾ 868 (900-2¾) | |



NE-3, 26 DEC 2024 to 23 JAN 2025

NE-3, 26 DEC 2024 to 23 JAN 2025