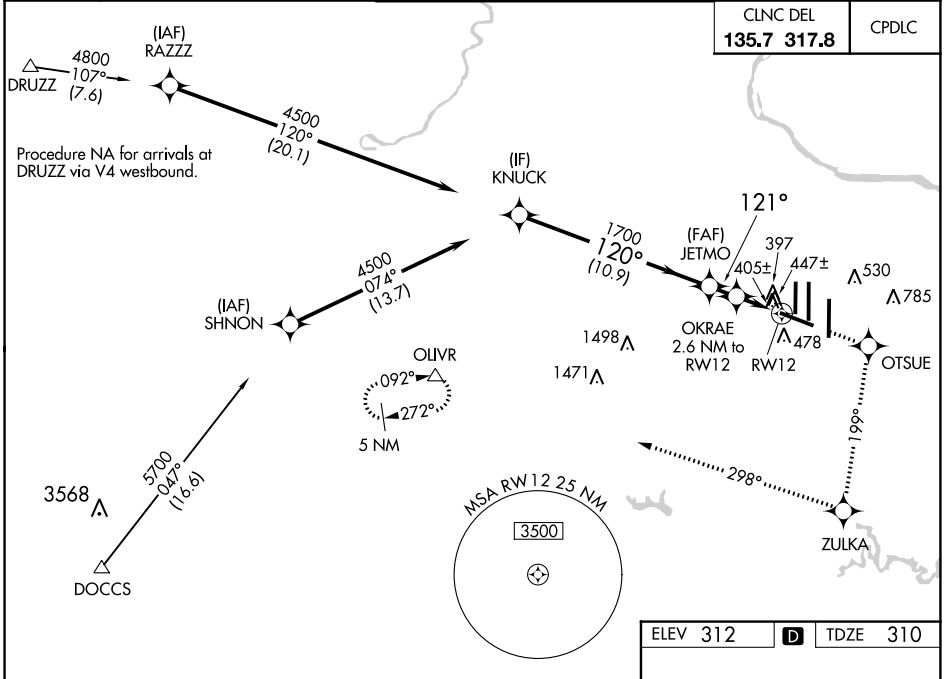


WAAS CH 86310 W12A	APP CRS 121°	Rwy Idg 10501 TDZE 310 Apt Elev 312
--	------------------------	--

RNAV (GPS) RWY 12

WASHINGTON DULLES INTL (IAD)

RNP APCH - GPS.		MALSR	MISSED APPROACH: Climb to 5000 direct OTSUE and on track 199° to ZULKA and right turn on track 298° to OLIVR and hold.
<p>▼ For inop ALS, increase LNAV Cats C/D visibility to RVR 6000.</p> <p>▲ For uncompensated Baro-VNAV systems, LNAV/VNAV NA below -15°C or above 48°C.</p>			
D-ATIS 134.85	POTOMAC APP CON 120.45 306.925 (241°-330°) 128.525 306.925 (091°-240°) 126.1 338.25 (331°-090°)	DULLES TOWER 120.1 317.8 (Rwy 1R/19L) 120.25 348.6 (Rwy 1C/19C) 134.425 348.6 (Rwys 1L/19R and 12/30)	GND CON 121.9 317.8 (EAST) 121.625 348.6 (WEST)



NE-3, 26 DEC 2024 to 23 JAN 2025

NE-3, 26 DEC 2024 to 23 JAN 2025

VGSIs and RNAV glidepath not coincident (VGSIs Angle 3.00/TCH 66).		5000	OTSUE	ZULKA	OLIVR
		↑	✧	✧ tr 199°	△ tr 298°
KNUCK		JETMO	OKRAE	RW12	
4500		1700	2.6 NM to RW12	1.1 NM to RW12	
Procedure Turn NA					
GP 3.00°					
TCH 49					
		10.9 NM	1.6 NM	1.5 NM	1.1 NM
CATEGORY	A	B	C	D	
LPV DA		510/18	200 (200-½)		
LNAV/VNAV DA		737/50	427 (500-1)		
LNAV MDA	720/24	410 (500-½)	720/40	410 (500-¾)	
CIRCLING	940-1	628 (700-1)	940-1¾ 628 (700-1¾)	1180-2¾ 868 (900-2¾)	

