

APP CRS	Rwy Idg	11089
191°	TDZE	272
	Apt Elev	312

RNAV (RNP) Z RWY 19C

WASHINGTON DULLES INTL (IAD)

RNP AR APCH - GPS.

▼ For uncompensated Baro-VNAV systems, procedure NA below -13°C or above 54°C. Simultaneous approach authorized. For inop ALS, increase RNP 0.11 visibility all Cats to RVR 4500, and RNP 0.25 visibility all Cats to RVR 5500.

ALSF-2



MISSED APPROACH: Climb to 3000 direct MOOOV and hold.

POTOMAC APP CON

120.45	306.925	(241°-330°)
128.525	306.925	(091°-240°)
126.1	338.25	(331°-090°)

DULLES TOWER

120.1	317.8	(Rwys 1R/19L)
120.25	348.6	(Rwy 1C/19C)
134.425	348.6	(Rwys 1L/19R and 12/30)

GND CON

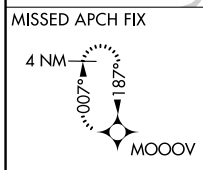
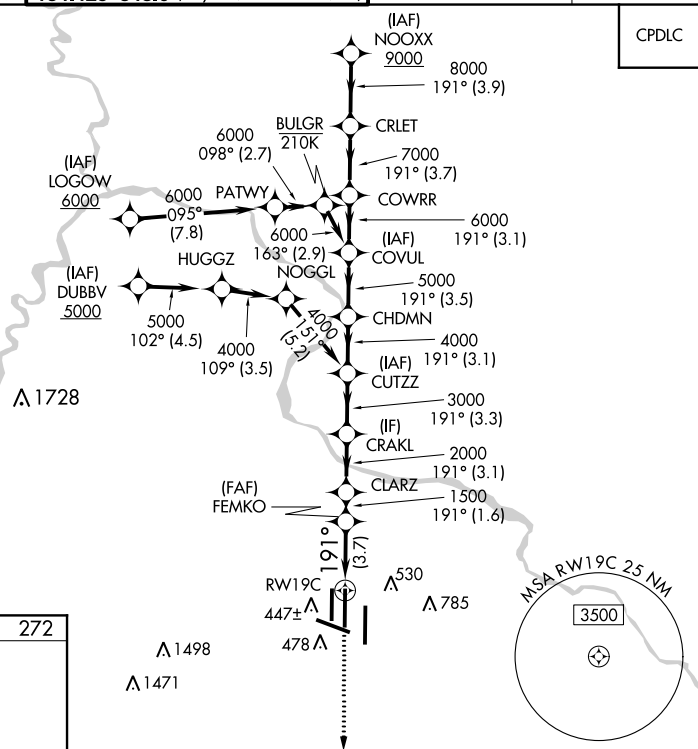
121.9	317.8	(EAST)
121.625	348.6	(WEST)

CLNC DEL

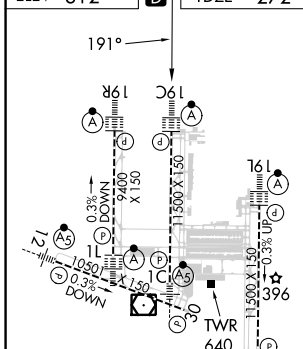
135.7	317.8
--------------	--------------

D-ATIS
134.85

CPDLC



ELEV	312	D	TDZE	272
------	------------	----------	------	------------



TDZ/CL Rwys 1C, 1L, 1R, 12, 19C and 19R
REIL Rwy 30
HIRL all Rwys

3000 MOOOV VGSi and RNAV glidepath not coincident (VGSi Angle 3.00/TCH 72).

	FEMKO	CLARZ	CRAKL	CUTZZ	CHDMN	COVUL	COWRR	CRLET	NOOXX
Altitude	1500	2000	3000	4000	5000	6000	7000	8000	9000
Distance	3.7 NM	1.6 NM	3.1 NM	3.3 NM	3.1 NM	3.5 NM	3.1 NM	3.7 NM	3.9 NM

CATEGORY	A	B	C	D
RNP 0.11 DA		554/24	282 (300-½)	
RNP 0.25 DA		624/30	352 (400-¾)	
RNP 0.30 DA		702/40	430 (400-¾)	

AUTHORIZATION REQUIRED

NE-3, 26 DEC 2024 to 23 JAN 2025

NE-3, 26 DEC 2024 to 23 JAN 2025