

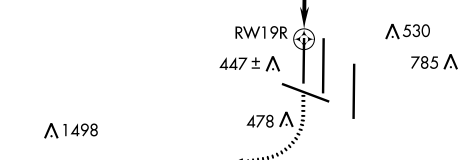
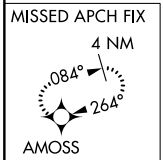
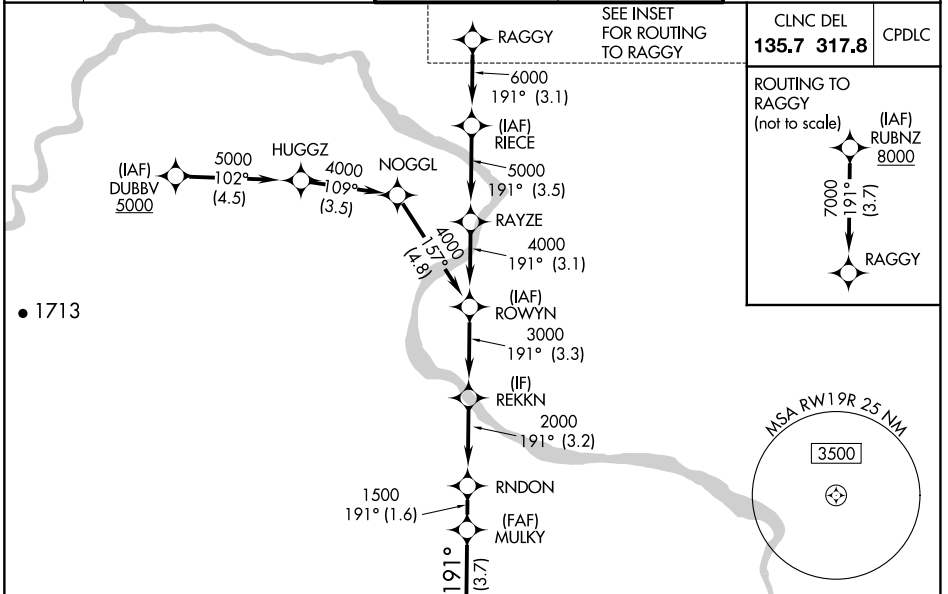
APP CRS	Rwy Idg	9400
191°	TDZE	278
	Apt Elev	312

RNAV (RNP) Z RWY 19R

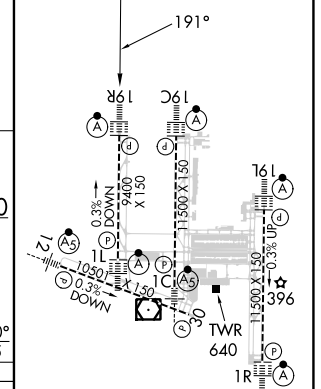
WASHINGTON DULLES INTL (IAD)

RNP AR APCH - GPS.	ALSIF-2	MISSED APPROACH: Climb to 800 then climbing right turn to 3000 direct AMOSS and hold.
<p>▼ For uncompensated Baro-VNAV systems, procedure NA below -13°C or above 54°C. Simultaneous approach authorized. For inop ALS, increase RNP 0.30 visibility all Cats to RVR 5500.</p>		

D-ATIS	POTOMAC APP CON	DULLES TOWER	GND CON
134.85	120.45 306.925 (241°-330°)	120.1 317.8 (Rwy 1R/19L)	121.9 317.8 (EAST)
	128.525 306.925 (091°-240°)	120.25 348.6 (Rwy 1C/19C)	121.625 348.6 (WEST)
	126.1 338.25 (331°-090°)	134.425 348.6 (Rwy 1L/19R and 12/30)	



ELEV	312	TDZE	278
------	-----	------	-----



800	3000	AMOSS	VGSI and RNAV glidepath not coincident (VGSI Angle 3.00/TCH 70).					RAGGY	RUBNZ
↑	↘	✧						8000	
			MULKY	RNDON	REKKN	ROWYN	RAYZE	RIECE	
			1500	2000	3000	4000	5000	6000	7000
			3.7 NM	1.6 NM	3.2 NM	3.3 NM	3.1 NM	3.5 NM	3.1 NM
									GP 3.00° TCH 55
CATEGORY	A		B			C		D	
RNP 0.10 DA	608/26		330 (300-½)						
RNP 0.30 DA	658/35		380 (400-¾)						

AUTHORIZATION REQUIRED

TDZ/CL Rwys 1C, 1L, 1R, 12, 19C and 19R
REIL Rwy 30
HIRL all Rwys

NE-3, 26 DEC 2024 to 23 JAN 2025

NE-3, 26 DEC 2024 to 23 JAN 2025