

APP CRS	Rwy ldg	<b>11500</b>
<b>011°</b>	TDZE	<b>286</b>
	Apt Elev	<b>312</b>

# RNAV (RNP) Z RWY 1C

WASHINGTON DULLES INTL (IAD)

RNP AR APCH - GPS.

MALSR



MISSED APPROACH: Climb to 4000 direct CHDMN and hold, continue climb-in-hold to 4000.

For uncompensated Baro-VNAV systems, procedure NA below -13°C or above 54°C. Simultaneous approach authorized. For inop ALS, increase RNP 0.11 all Cats visibility to RVR 4000.

POTOMAC APP CON  
**120.45 306.925** (241°-330°)  
**128.525 306.925** (091°-240°)  
**126.1 338.25** (331°-090°)

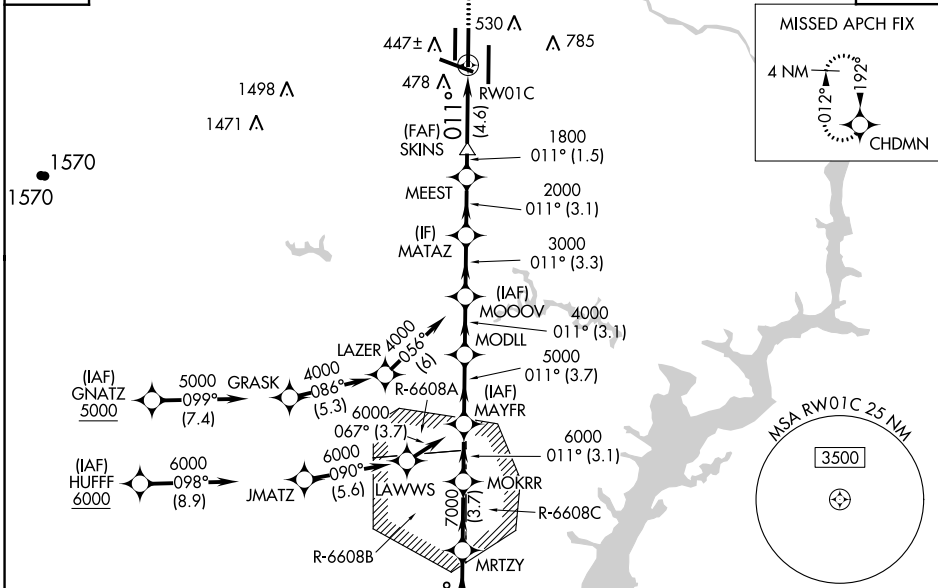
DULLES TOWER  
**120.1 317.8** (Rwy 1R/19L)  
**120.25 348.6** (Rwy 1C/19C)  
**134.425 348.6** (Rwys 1L/19R and 12/30)

GND CON  
**121.9 317.8** (EAST)  
**121.625 348.6** (WEST)

CLNC DEL  
**135.7 317.8**

D-ATIS  
**134.85**

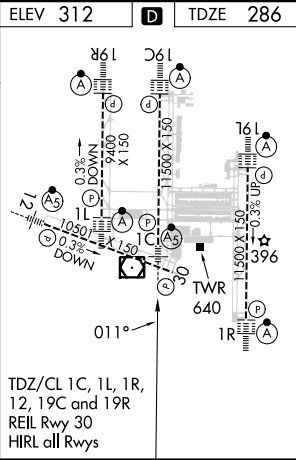
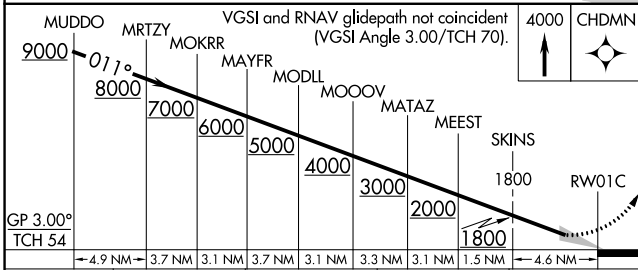
CPDLC



NE-3, 26 DEC 2024 to 23 JAN 2025

NE-3, 26 DEC 2024 to 23 JAN 2025

ELEV 312	<b>D</b>	TDZE 286
----------	----------	----------



CATEGORY	A	B	C	D
RNP 0.11 DA	540/24 254 (300-½)			
RNP 0.30 DA	730/45 444 (500-¾)			

**AUTHORIZATION REQUIRED**

TDZ/CL 1C, 1L, 1R,  
 12, 19C and 19R  
 REIL Rwy 30  
 HIRL all Rwys