

APP CRS	Rwy Idg	9400
011°	TDZE	296
	Apt Elev	312

RNAV (RNP) Z RWY 1L

WASHINGTON DULLES INTL (IAD)

RNP AR APCH - GPS.

▼ For uncompensated Baro-VNAV systems, procedure NA below -13°C or above 54°C. Simultaneous approach authorized. For inop ALS, increase RNP 0.11 all Cats visibility to RVR 4500 and RNP 0.30 all Cats visibility to RVR 6000.

ALS-F-2



MISSED APPROACH: Climb to 800 then climbing left turn to 3000 direct NHLEN and hold.

POTOMAC APP CON

120.45	306.925	(241°-330°)
128.525	306.925	(091°-240°)
126.1	338.25	(331°-090°)

DULLES TOWER (Rwy 1R/19L)

120.1	317.8	(Rwy 1R/19L)
120.25	348.6	(Rwy 1C/19C)
134.425	348.6	(Rwys 1L/19R and 12/30)

GND CON

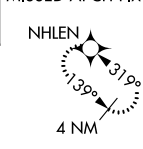
121.9	317.8	(EAST)
121.625	348.6	(WEST)

CLNC DEL

135.7	317.8
--------------	--------------

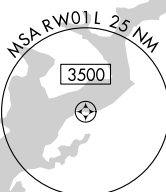
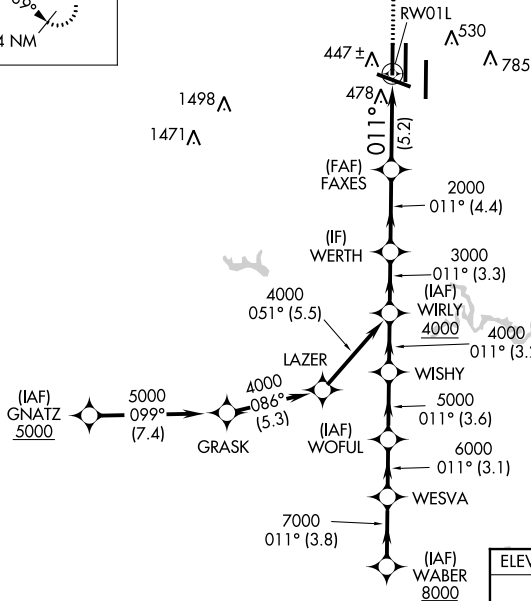
D-ATIS
134.85

MISSED APCH FIX



CPDLC

▲
2346



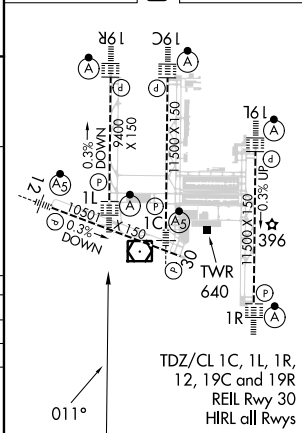
ELEV 312 **D** TDZE 296

VGSI and RNAV glidepath not coincident (VGSI Angle 3.00/TCH 70).

WABER	WESVA	WOFUL	WISHY	WIRLY	WERTH	FAXES	RWY 1L
8000	7000	6000	5000	4000	3000	2000	
GP 3.00°							
TCH 55							
	3.8 NM	3.1 NM	3.6 NM	3.2 NM	3.3 NM	4.4 NM	5.2 NM

CATEGORY	A	B	C	D
RNP 0.11 DA		572/24	276 (300-½)	
RNP 0.30 DA		710/40	414 (400-¾)	

AUTHORIZATION REQUIRED



TDZ/CL 1C, 1L, 1R, 12, 19C and 19R
REIL Rwy 30
HIRL all Rwys

NE-3, 26 DEC 2024 to 23 JAN 2025

NE-3, 26 DEC 2024 to 23 JAN 2025