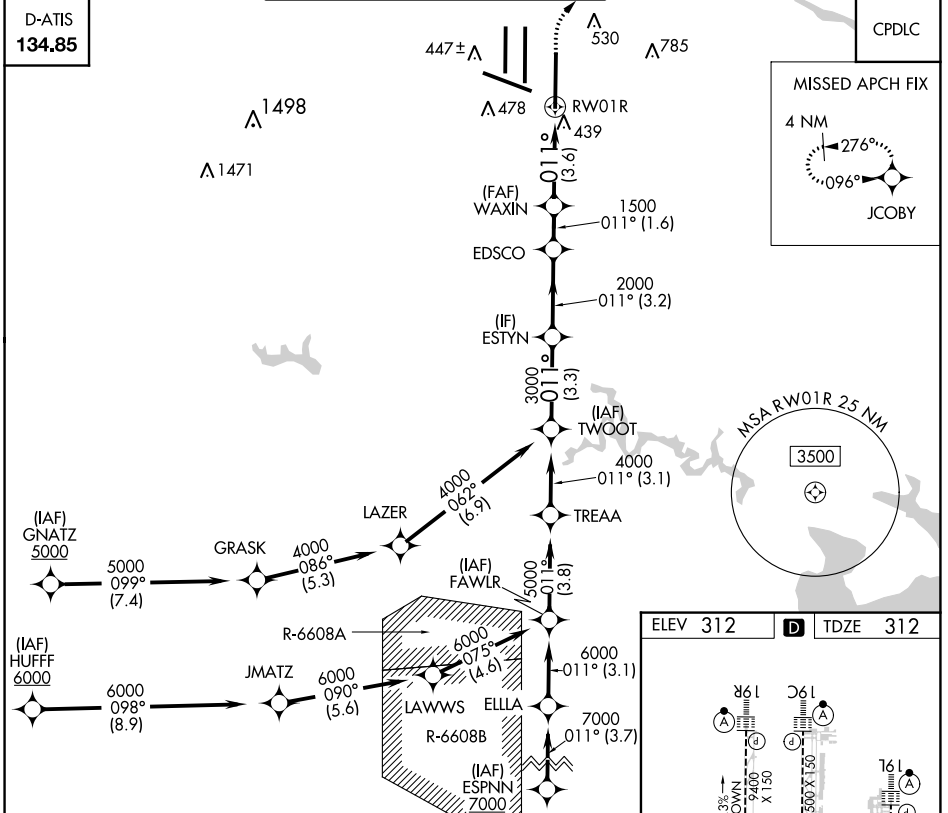


APP CRS	Rwy Idg	<b>11500</b>
<b>011°</b>	TDZE	<b>312</b>
	Apt Elev	<b>312</b>

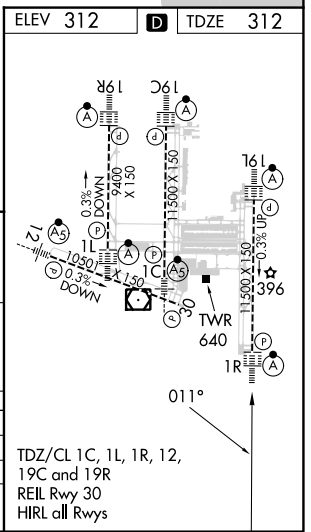
# RNAV (RNP) Z RWY 1R

WASHINGTON DULLES INTL (IAD)

RNP AR APCH - GPS.		ALSIF-2	MISSED APPROACH: Climb to 800 then climbing right turn to 3000 direct JCOBY and hold.
▼ For uncompensated Baro-VNAV systems, procedure NA below -13°C or above 54°C. For inop ALS, increase RNP 0.11 all Cats visibility to RVR 4500. Simultaneous approach authorized.			
POTOMAC APP CON <b>120.45 306.925</b> (241°-330°) <b>128.525 306.925</b> (091°-240°) <b>126.1 338.25</b> (331°-090°)		DULLES TOWER <b>120.1 317.8</b> (Rwy 1R/19L) <b>120.25 348.6</b> (Rwy 1C/19C) <b>134.425 348.6</b> (Rwys 1L/19R and 12/30)	GND CON <b>121.9 317.8</b> (EAST) <b>121.625 348.6</b> (WEST)
		CLNC DEL	<b>135.7 317.8</b>



TWOOT	VGSI and RNAV glidepath not coincident (VGSI Angle 3.00/TCH 72).	800	3000	JCOBY
4000	ESTYN	EDSCO	WAXIN	RWY 01R
3000		2000	1500	
GP 3.00°				
TCH 55				
	3.3 NM	3.2 NM	1.6 NM	3.6 NM
CATEGORY	A	B	C	D
RNP 0.11 DA	625/24		313 (400-½)	
RNP 0.30 DA	770/45		458 (500-¾)	



**AUTHORIZATION REQUIRED**

TDZ/CL 1C, 1L, 1R, 12, 19C and 19R  
REIL Rwy 30  
HIRL all Rwys

NE-3, 26 DEC 2024 to 23 JAN 2025

NE-3, 26 DEC 2024 to 23 JAN 2025