

APP CRS <b>301°</b>	Rwy Idg TDZE <b>288</b> Apt Elev <b>312</b>
------------------------	---

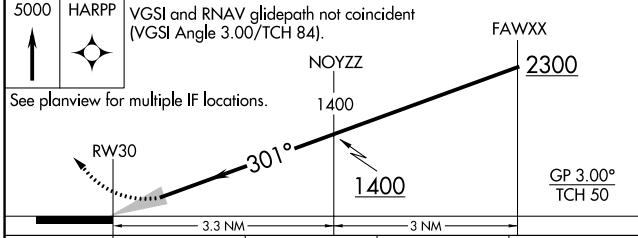
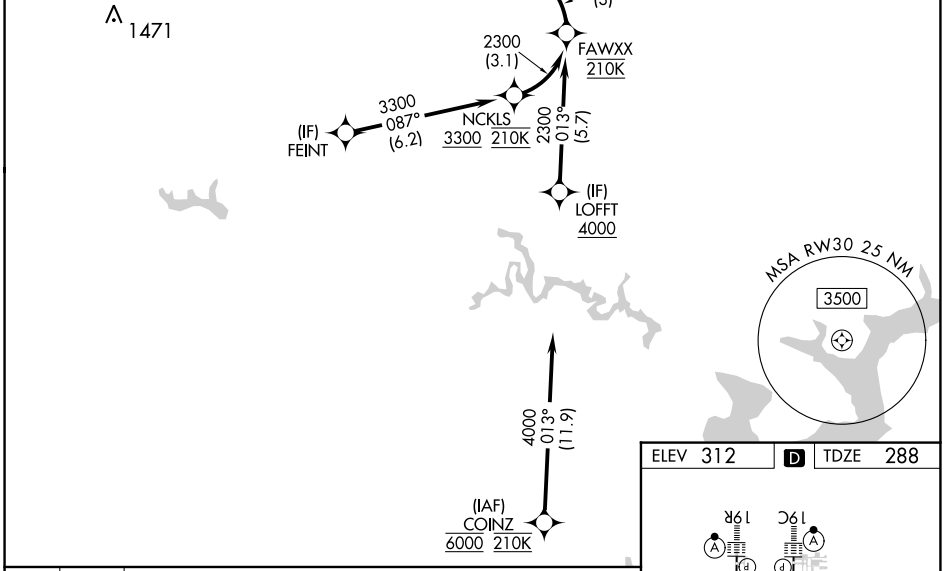
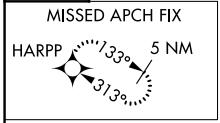
# RNAV (RNP) Z RWY 30

WASHINGTON DULLES INTL (IAD)

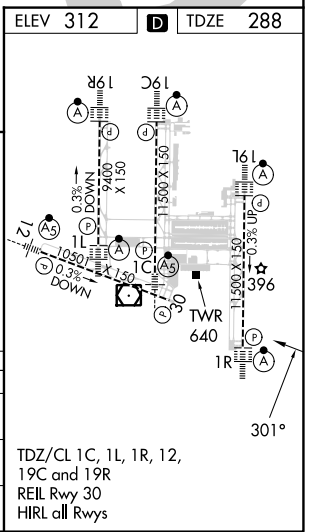
RNP AR APCH - GPS.	For uncompensated Baro-VNAV systems, procedure NA below -13°C or above 54°C.	MISSED APPROACH: Climb to 5000 direct HARPP and hold.
--------------------	--	---

POTOMAC APP CON <b>120.45 306.925</b> (241°-330°) <b>128.525 306.925</b> (091°-240°) <b>126.1 338.25</b> (331°-090°)	DULLES TOWER <b>120.1 317.8</b> (Rwys 1R/19L) <b>120.25 348.6</b> (Rwys 1C/19C) <b>134.425 348.6</b> (Rwys 1L/19R and 12/30)	GND CON <b>121.9 317.8</b> (EAST) <b>121.625 348.6</b> (WEST)	CLNC DEL <b>135.7 317.8</b>
---	---	---	--------------------------------

D-ATIS <b>134.85</b>	CPDLC
-------------------------	-------



CATEGORY	A	B	C	D
RNP 0.11 DA		750-1 <sup>3</sup> / <sub>8</sub>	462 (500-1 <sup>3</sup> / <sub>8</sub> )	
RNP 0.30 DA		808-1 <sup>3</sup> / <sub>8</sub>	520 (500-1 <sup>3</sup> / <sub>8</sub> )	



**AUTHORIZATION REQUIRED**

NE-3, 26 DEC 2024 to 23 JAN 2025

NE-3, 26 DEC 2024 to 23 JAN 2025