

WAAS CH 97509 W01B	APP CRS 011°	Rwy ldg 11500 TDZE 286 Apt Elev 312
--	------------------------	--

RNAV (GPS) Y RWY 1C

WASHINGTON DULLES INTL (IAD)

RNP APCH - GPS.

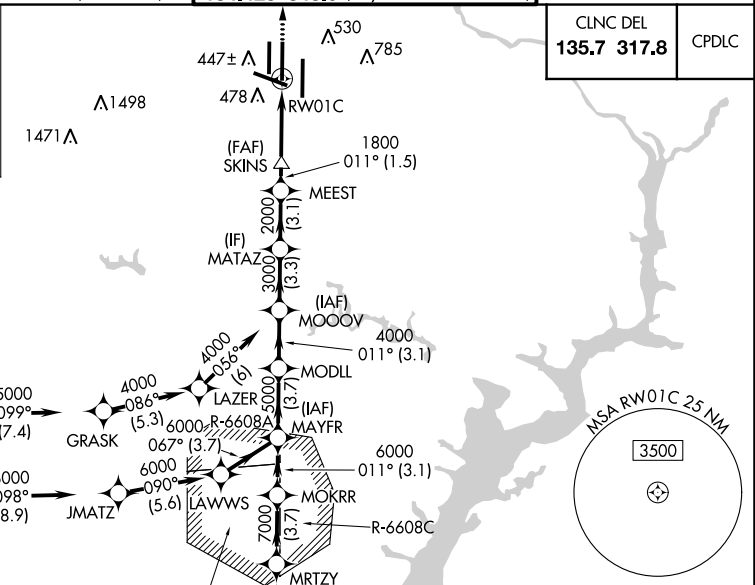
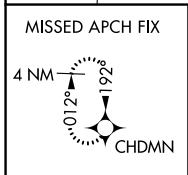
⚠ For uncompensated Baro-VNAV systems, LNAV/VNAV NA below -13°C or above 54°C.
⚠ Use of FD or AP required during simultaneous operations. LNAV procedure NA during simultaneous operations. Simultaneous approach authorized. For inop ALR, increase LNAV/VNAV all Cats visibility to 1 1/2 SM. Increase LNAV Cat C/D visibility to 1 1/4 SM.

MALSR

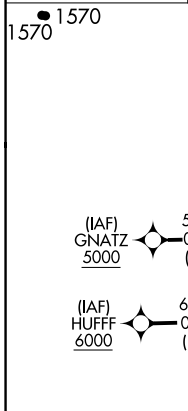


MISSED APPROACH:
Climb to 4000 direct CHDMN and hold, continue climb-in-hold to 4000.

D-ATIS 134.85	POTOMAC APP CON 120.45 306.925 (241°-330°) 128.525 306.925 (091°-240°) 126.1 338.25 (331°-090°)	DULLES TOWER 120.1 317.8 (Rwy 1R/19L) 120.25 348.6 (Rwy 1C/19C) 134.425 348.6 (Rwys 1L/19R and 12/30)	GND CON 121.9 317.8 (EAST) 121.625 348.6 (WEST)
-------------------------	---	---	---



CLNC DEL 135.7 317.8	CPDLC
--------------------------------	-------

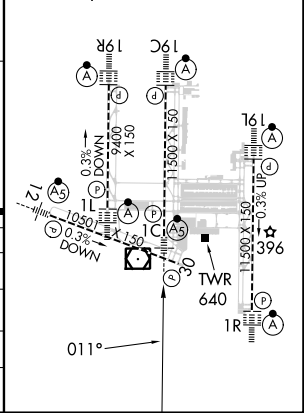


ELEV 312	D	TDZE 286
----------	----------	----------

TDZ/CL Rwys 1C, 1L, 1R, 12, 19C, and 19R
 REIL Rwy 30
 HIRL all Rwys

VGSI and RNAV glidepath not coincident (VGSI Angle 3.00/TCH 70).

MUDDO	MRTZY	MOKRR	MAYFR	MODLL	MOOOV	MATAZ	MEEST	SKINS	RWY 1C
9000	7000	6000	5000	4000	3000	2000	1800	1800	1800
GP 3.00°									
TCH 54									
	4.9 NM	3.7 NM	3.1 NM	3.7 NM	3.1 NM	3.3 NM	3.1 NM	1.5 NM	2.9 NM
CATEGORY	A			B			C		D
LPV DA	486/18			200 (200-1/2)					
LNAV/VNAV DA	801/55			515 (500-1 1/4)					
LNAV MDA	900/24			614 (600-1/2)		900-1 3/8		614 (600-1 1/8)	
CIRCLING	940-1		628 (700-1)		940-1 3/4		628 (700-1 3/4)		1180-2 3/4
									868 (900-2 3/4)



NE-3, 26 DEC 2024 to 23 JAN 2025

NE-3, 26 DEC 2024 to 23 JAN 2025