

WAAS CH 99309 W01D	APP CRS 011°	Rwy ldg 9400 TDZE 296 Apt Elev 312
----------------------------------------	------------------------	---------------------------------------------------------------

RNAV (GPS) Y RWY 1L

WASHINGTON DULLES INTL (IAD)

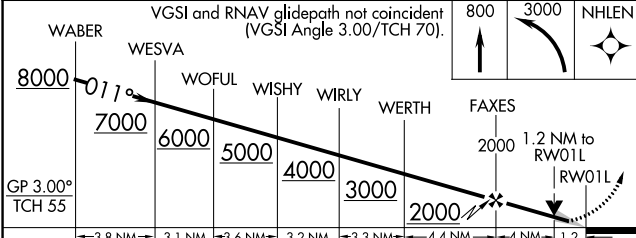
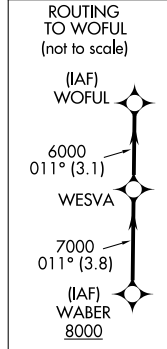
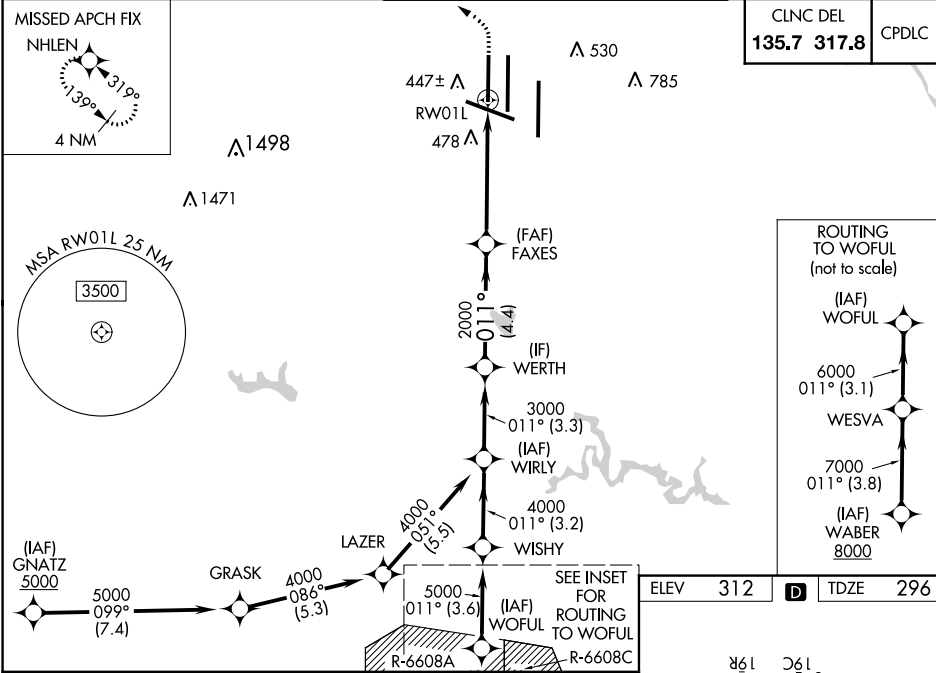
RNP APCH - GPS.

▼ For uncompensated Baro-VNAV systems, LNAV/VNAV NA below -13°C or above 54°C. Use of FD or AP required during simultaneous operations. LNAV procedure NA during simultaneous operations. Simultaneous approach authorized. For inop ALS, increase LNAV/VNAV all Cats visibility to RVR 5500. Increase LNAV Cat C/D visibility to 1/2 SM.

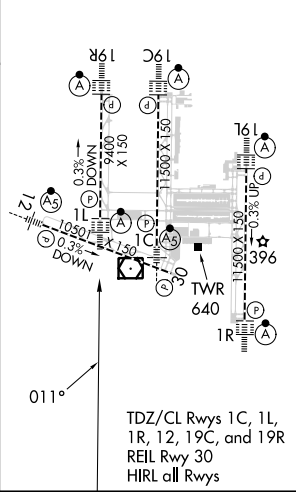
ALSF-2
ⓐ

MISSED APPROACH: Climb to 800 then climbing left turn to 3000 direct NHLEN and hold.

D-ATIS 134.85	POTOMAC APP CON 120.45 306.925 (241°-330°) 128.525 306.925 (091°-240°) 126.1 338.25 (331°-090°)	DULLES TOWER 120.1 317.8 (Rwy 1R/19L) 120.25 348.6 (Rwy 1C/19C) 134.425 348.6 (Rwys 1L/19R and 12/30)	GND CON 121.9 317.8 (EAST) 121.625 348.6 (WEST)
-------------------------	-------------------------------------------------------------------------------------------------------------------------------	-------------------------------------------------------------------------------------------------------------------------------------	---------------------------------------------------------------------



ELEV	312	TDZE	296
------	-----	------	-----



GP 3.00° TCH 55	←3.8 NM→	←3.1 NM→	←3.6 NM→	←3.2 NM→	←3.3 NM→	←4.4 NM→	←4 NM→	1.2
CATEGORY	A		B		C		D	
LPV DA			496/18		200 (200-1/2)			
LNAV/VNAV DA			658/35		362 (400-3/4)			
LNAV MDA	760/24		464 (500-1/2)		760/50		464 (500-1)	
CIRCLING	940-1		628 (700-1)		940-1 3/4 628 (700-1 3/4)		1180-2 3/4 868 (900-2 3/4)	

NE-3, 26 DEC 2024 to 23 JAN 2025

NE-3, 26 DEC 2024 to 23 JAN 2025