

WAAS CH <b>56409</b> W01A	APP CRS <b>011°</b>	Rwy ldg <b>11500</b> TDZE <b>312</b> Apt Elev <b>312</b>
---------------------------------	------------------------	--

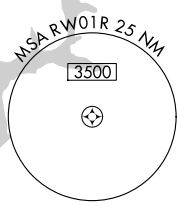
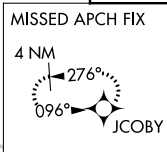
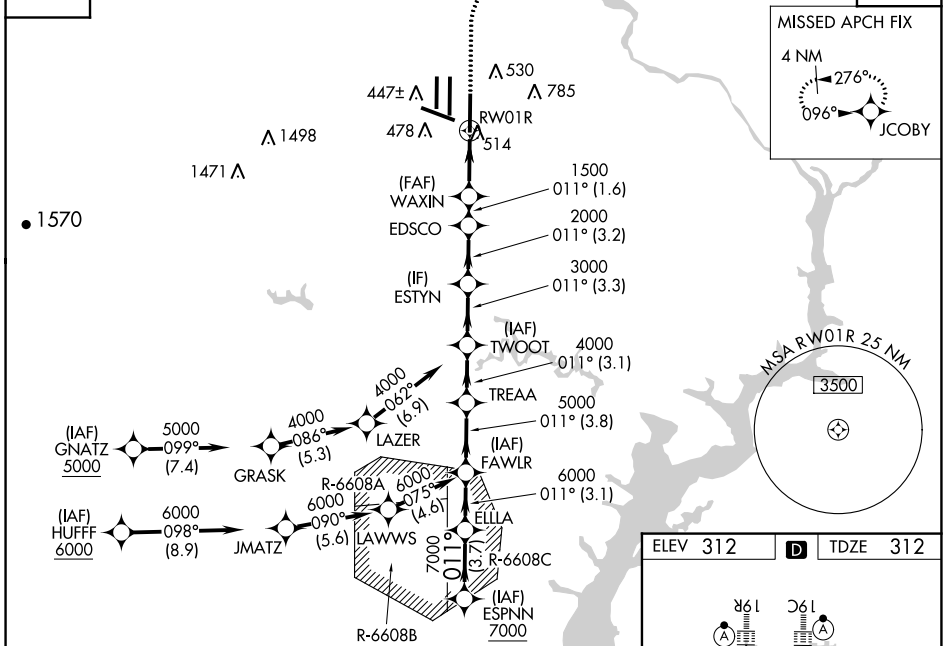
# RNAV (GPS) Y RWY 1R

WASHINGTON DULLES INTL (IAD)

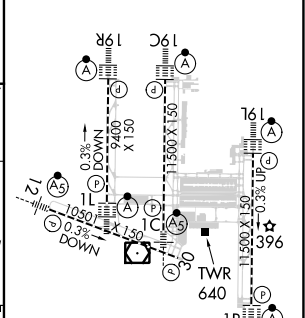
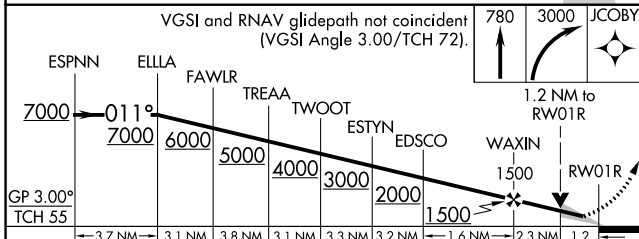
RNP APCH - GPS.		ALSF-2	MISSED APPROACH: Climb to 780, then climbing right turn to 3000 direct JCOBY and hold.
<p>▼ For uncompensated Baro-VNAV systems, LNAV/VNAV NA below -13°C or above 54°C.</p> <p>▲ Simultaneous approach authorized. LNAV procedure NA during simultaneous operations.</p> <p>Use of FD or AP required during simultaneous operations. For inop ALS, increase LNAV/VNAV all Cats visibility to RVR 6000 and LNAV Cat C/D visibility to 1/2 SM.</p>			

POTOMAC APP CON <b>120.45 306.925</b> (241°-330°) <b>128.525 306.925</b> (091°-240°) <b>126.1 338.25</b> (331°-090°)	DULLES TOWER <b>120.1 317.8</b> (Rwy 1R/19L) <b>120.25 348.6</b> (Rwy 1C/19C) <b>134.425 348.6</b> (Rwys 1L/19R and 12/30)	GND CON <b>121.9 317.8</b> (EAST) <b>121.625 348.6</b> (WEST)	CLNC DEL <b>135.7 317.8</b>
---	---	---	--------------------------------

D-ATIS <b>134.85</b>	CPDLC
-------------------------	-------



ELEV 312	D	TDZE 312
----------	---	----------



CATEGORY	A		B		C		D
LPV DA	512/18		200 (200-1/2)				
LNAV/VNAV DA	728/40		416 (500-3/4)				
LNAV MDA	780/24	468 (500-1/2)	780/50	468 (500-1)			
CIRCLING	940-1	628 (700-1)	940-1 3/4	628 (700-1 3/4)	1180-2 3/4	868 (900-2 3/4)	

TDZ/CL Rwys 1C, 1L, 1R, 12, 19C and 19R
REIL Rwy 30
HIRL all Rwys

NE-3, 26 DEC 2024 to 23 JAN 2025

NE-3, 26 DEC 2024 to 23 JAN 2025