

APP CRS	Rwy Idg	10501
301°	TDZE	288
	Apt Elev	312

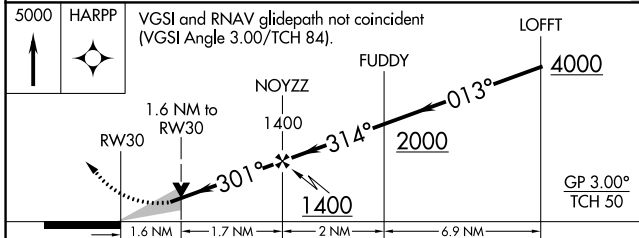
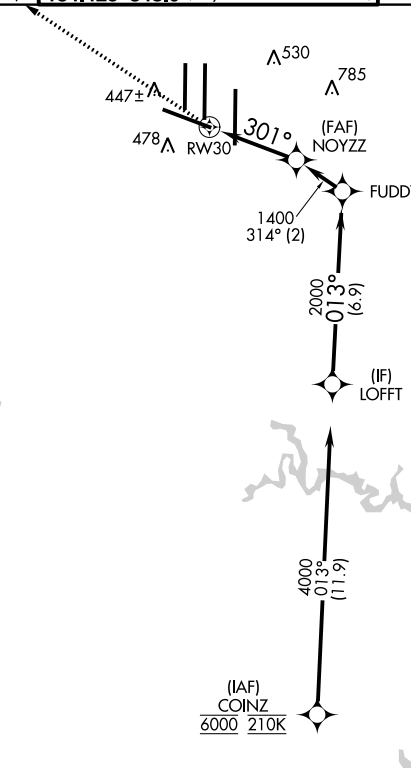
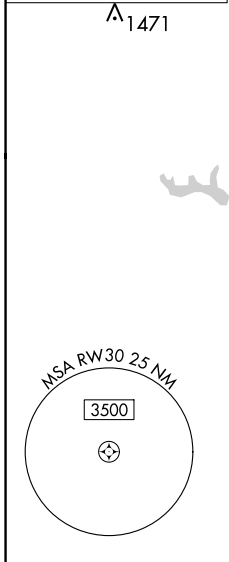
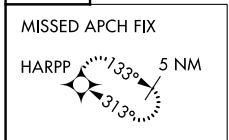
RNAV (GPS) Y RWY 30

WASHINGTON DULLES INTL (IAD)

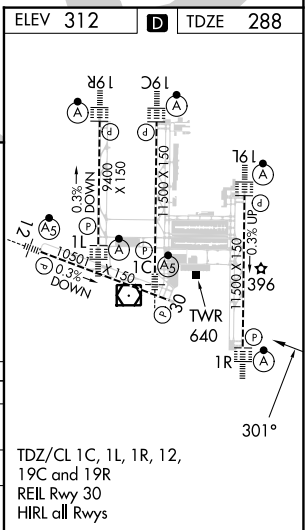
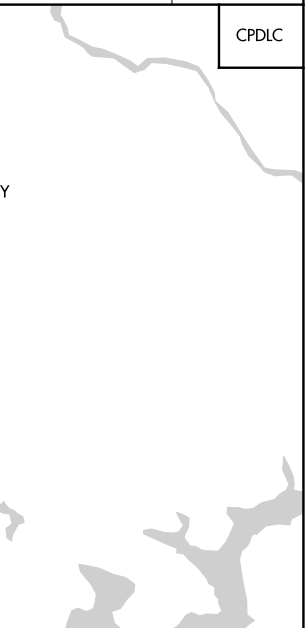
RNP APCH - GPS.	MISSED APPROACH: Climb to 5000 direct HARPP and hold.
<p>▼ For uncompensated Baro-VNAV systems, LNAV/VNAV NA below -13°C or above 54°C.</p> <p>▲ POTOMAC APP CON</p> <p>120.45 306.925 (241°-330°)</p> <p>128.525 306.925 (091°-240°)</p> <p>126.1 338.25 (331°-090°)</p>	<p>DULLES TOWER</p> <p>120.1 317.8 (Rwy 1R/19L)</p> <p>120.25 348.6 (Rwy 1C/19C)</p> <p>134.425 348.6 (Rwys 1L/19R and 12/30)</p>

GND CON	CLNC DEL
121.9 317.8 (EAST)	135.7 317.8
121.625 348.6 (WEST)	

D-ATIS	CPDLC
134.85	



CATEGORY	A	B	C	D
LNAV/VNAV DA	801-1 ³ / ₈		513 (500-1 ³ / ₈)	
LNAV MDA	900/55	612 (600-1)	900-1 ³ / ₄	612 (600-1 ³ / ₄)
CIRCLING	940-1	628 (700-1)	940-1 ³ / ₄	1180-2 ³ / ₄
			628 (700-1 ³ / ₄)	868 (900-2 ³ / ₄)



NE-3, 26 DEC 2024 to 23 JAN 2025

NE-3, 26 DEC 2024 to 23 JAN 2025