

# SCRAM SIX DEPARTURE (RNAV)

**TOP ALTITUDE:**  
3000

P-56B



P-56A



## DEPARTURE ROUTE DESCRIPTION

TAKEOFF RWY 1L/C/R, 19L/C/R, 30: Climb on heading assigned by ATC, expect RADAR vectors to POOCH, then on track 240° to SCRAM, thence. . .

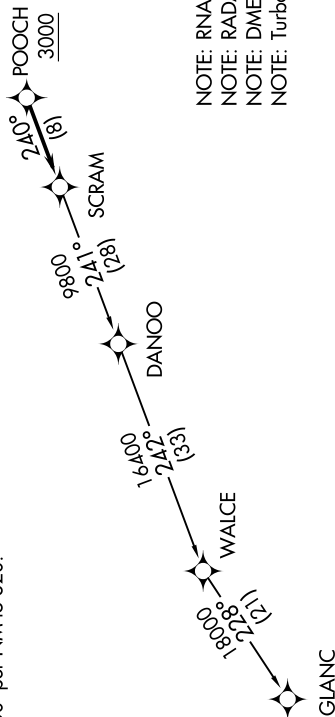
. . . .as depicted. Maintain 3000. Expect clearance to filed altitude within ten (10) minutes after departure.

GLANC TRANSITION (SCRAM6.GLANC):

D-ATIS  
134.85  
CLNC DEL  
135.7 317.8  
CPDLC  
GND CON  
121.9 317.8 (EAST)  
121.625 348.6 (WEST)  
DULLES TOWER  
120.1 317.8 (Rwy 1R/19L)  
120.25 348.6 (Rwy 1C/19C)  
134.425 348.6 (Rwys 1L/19R, 12/30)  
POTOMAC DEP CON  
126.65 350.2

### TAKEOFF MINIMUMS:

Rwys 1L/C/R, 19L/C/R, 30:  
Standard with a minimum climb  
of 500' per NM to 820.



- NOTE: RNAV 1.
- NOTE: RADAR required.
- NOTE: DME/DME/IRU or GPS required.
- NOTE: Turbo-jets only.

NOTE: Chart not to scale.