

VOR/DME AML <b>113.5</b> Chan <b>82</b>	APP CRS <b>120°</b>	Rwy Idg TDZE Apt Elev	<b>10501</b> <b>310</b> <b>312</b>
---	------------------------	-----------------------------	--

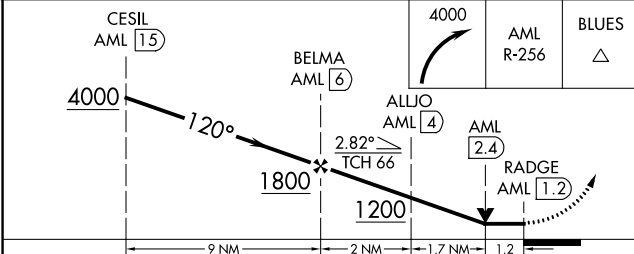
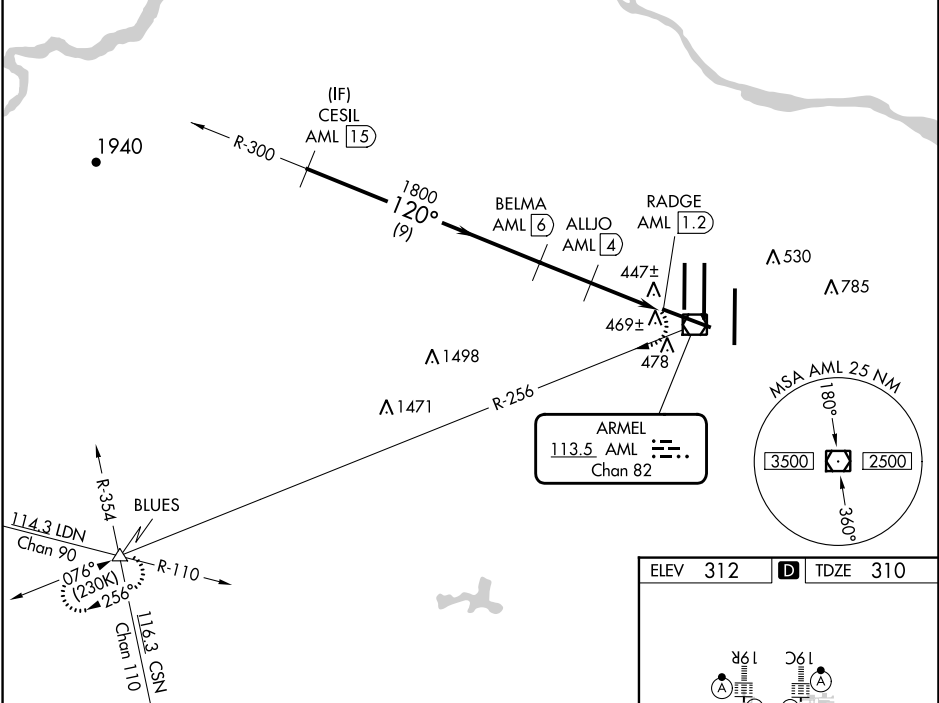
# VOR/DME RWY 12

WASHINGTON DULLES INTL (IAD)

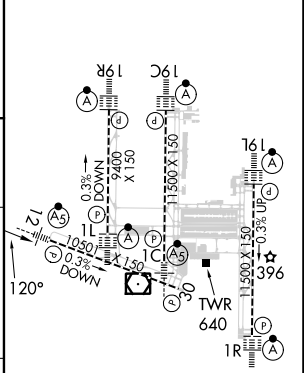
		MISSED APPROACH: Climbing right turn to 4000 on AML VOR/DME R-256 to BLUES INT and hold.

POTOMAC APP CON <b>120.45 306.925</b> (241°-330°) <b>128.525 306.925</b> (091°-240°) <b>126.1 338.25</b> (331°-090°)	DULLES TOWER <b>120.1 317.8</b> (Rwy 1R/19L) <b>120.25 348.6</b> (Rwy 1C/19C) <b>134.425 348.6</b> (Rwys 1L/19R and 12/30)	GND CON <b>121.9 317.8</b> (EAST) <b>121.625 348.6</b> (WEST)	CLNC DEL <b>135.7 317.8</b>
---	---	---	--------------------------------

D-ATIS <b>134.85</b>	<b>RADAR REQUIRED</b>	CPDLC
-------------------------	-----------------------	-------



ELEV 312	<b>D</b>	TDZE 310
----------	----------	----------



CATEGORY	A	B	C	D
S-12	740/24	430 (500-½)	740/40	430 (500-¾)
CIRCLING	940-1	628 (700-1)	940-1¾ 628 (700-1¾)	1180-2¾ 868 (900-2¾)

TDZ/CL 1C, 1L, 1R, 12, 19C and 19R  
REIL Rwy 30  
HIRL all Rwys