

APP CRS	Rwy Idg	<b>4204</b>
<b>088°</b>	TDZE	<b>818</b>
	Apt Elev	<b>835</b>

# RNAV (GPS) RWY 9

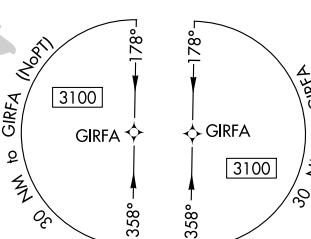
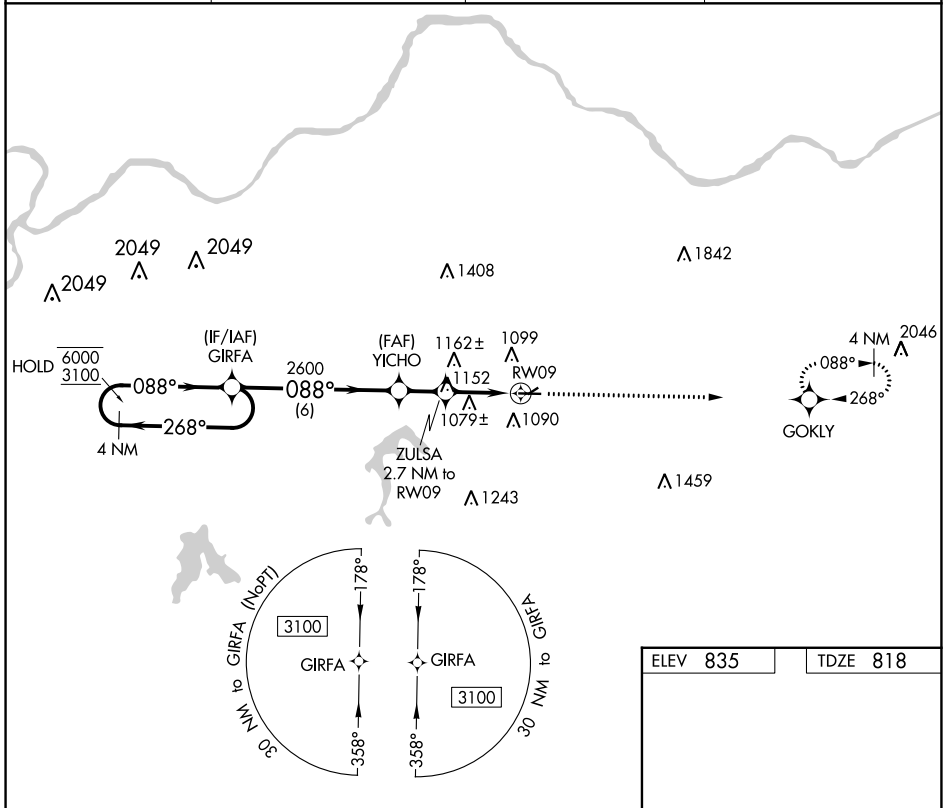
EAST KANSAS CITY (3GV)

RNP APCH - GPS.

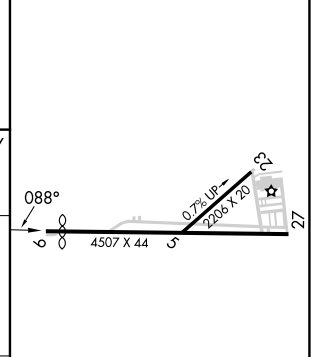
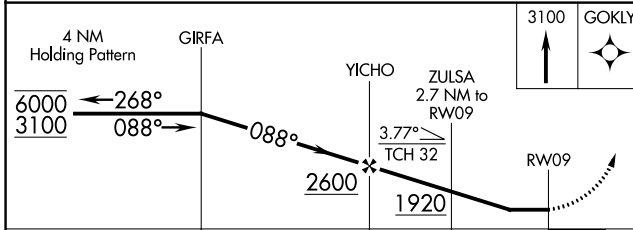
**NA** Procedure NA at night. Rwy 9 helicopter visibility reduction below 1 SM  
**NA** NA. Use Charles B Wheeler Downtown altimeter setting.

MISSED APPROACH: Climb to 3100 direct GOKLY and hold.

MKC ASOS <b>120.75</b>	KANSAS CITY APP CON <b>118.4 307.35</b>	CLNC DEL <b>121.3</b>	UNICOM <b>122.8 (CTAF) 0</b>
---------------------------	--	--------------------------	---------------------------------



ELEV 835	TDZE 818
----------	----------



CATEGORY	A	B	C	D
LNVA MDA	1400-1	582 (600-1)		NA
CIRCLING	1460-1	625 (700-1)		NA

REIL Rwy 9 **0**  
 MIRL Rwy 9-27 **0**

NC-3, 26 DEC 2024 to 23 JAN 2025

NC-3, 26 DEC 2024 to 23 JAN 2025