

(ADELL7.ADELL) 24305

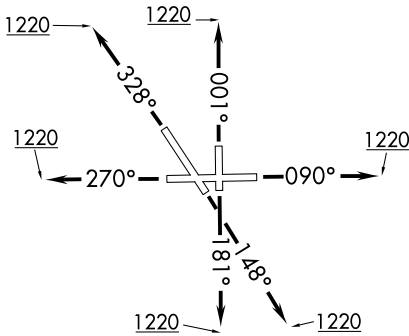
# ADELL SEVEN DEPARTURE (RNAV)

AL-5103 (FAA)

AURORA MUNI (ARR)  
CHICAGO/AURORA, ILLINOIS

CHICAGO DEP CON  
133.5 349.0  
ATIS  
125.85  
GND CON  
121.7  
AURORA TOWER ★  
120.6 (CTAF)

**TOP ALTITUDE:  
3000**



### TAKEOFF MINIMUMS:

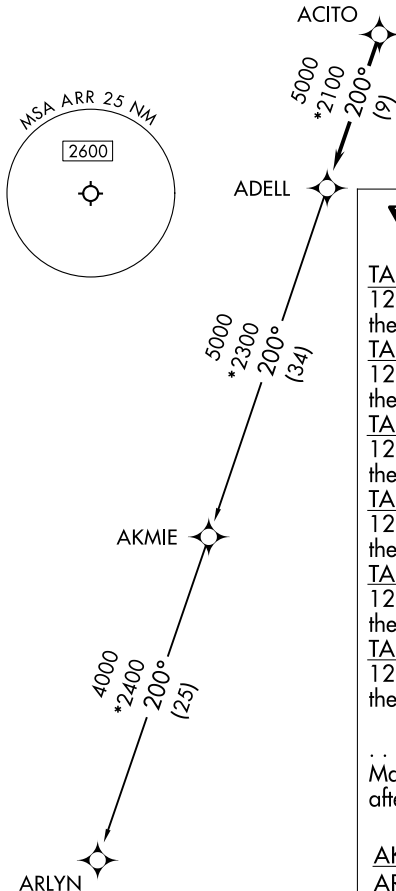
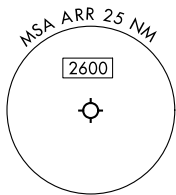
Rwys 9, 15, 18, 27, 33, 36: Standard.

NOTE: Turbojet departures maintain 250K until advised by ATC.

NOTE: AKMIE Transition: For aircraft inbound to BMI, SPI, PIA, or as assigned by ATC.

RNAV 1 - DME/DME/IRU or GPS.

RADAR required. RADAR required for non-GPS equipped aircraft.



### DEPARTURE ROUTE DESCRIPTION

TAKEOFF RUNWAY 9: Climb on heading 090° to 1220, then as assigned by ATC, for vectors to ACITO, thence. . . .

TAKEOFF RUNWAY 15: Climb on heading 148° to 1220, then as assigned by ATC, for vectors to ACITO, thence. . . .

TAKEOFF RUNWAY 18: Climb on heading 181° to 1220, then as assigned by ATC, for vectors to ACITO, thence. . . .

TAKEOFF RUNWAY 27: Climb on heading 270° to 1220, then as assigned by ATC, for vectors to ACITO, thence. . . .

TAKEOFF RUNWAY 33: Climb on heading 328° to 1220, then as assigned by ATC, for vectors to ACITO, thence. . . .

TAKEOFF RUNWAY 36: Climb on heading 001° to 1220, then as assigned by ATC, for vectors to ACITO, thence. . . .

. . . . on track 200° to ADELL, then on (transition). Maintain 3000. Expect filed altitude 10 minutes after departure.

AKMIE TRANSITION (ADELL7.AKMIE):

ARLYN TRANSITION (ADELL7.ARLYN):

NOTE: Chart not to scale.

## ADELL SEVEN DEPARTURE (RNAV)

(ADELL7.ADELL) 31OCT24

CHICAGO/AURORA, ILLINOIS  
AURORA MUNI (ARR)

EC-3, 26 DEC 2024 to 23 JAN 2025

EC-3, 26 DEC 2024 to 23 JAN 2025