

(BLOKR7.BLOKR) 24305

AL-5103 (FAA)

AURORA MUNI (A.R.R)
CHICAGO/AURORA, ILLINOIS

BLOKR SEVEN DEPARTURE (RNAV)

CHICAGO DEP CON
133.5 349.0
ATIS
125.85
GND CON
121.7
AURORA TOWER ★
120.6 (CTAF)

RNAV 1 - DME/DME/IRU or GPS.
RADAR required. RADAR required for
non-GPS equipped aircraft.

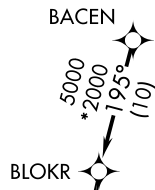
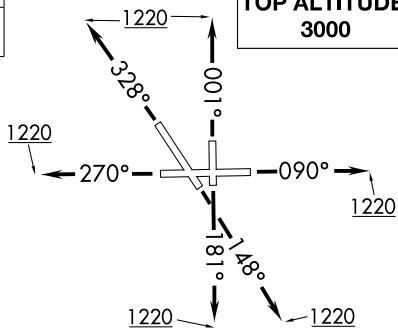
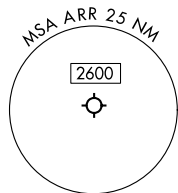
**TOP ALTITUDE:
3000**

TAKEOFF MINIMUMS:

Rwys 9, 15, 18, 27, 33, 36: Standard.

NOTE: Turbojet departures maintain 250K
until advised by ATC.

NOTE: ROBERTS Transition: For aircraft inbound
to CMI or STL, or as assigned by ATC.



DEPARTURE ROUTE DESCRIPTION

TAKEOFF RUNWAY 9: Climb on heading 090° to 1220, then as assigned by ATC, for vectors to BACEN, thence. . . .

TAKEOFF RUNWAY 15: Climb on heading 148° to 1220, then as assigned by ATC, for vectors to BACEN, thence. . . .

TAKEOFF RUNWAY 18: Climb on heading 181° to 1220, then as assigned by ATC, for vectors to BACEN, thence. . . .

TAKEOFF RUNWAY 27: Climb on heading 270° to 1220, then as assigned by ATC, for vectors to BACEN, thence. . . .

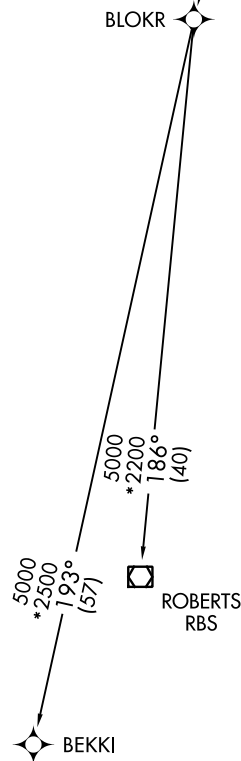
TAKEOFF RUNWAY 33: Climb on heading 328° to 1220, then as assigned by ATC, for vectors to BACEN, thence. . . .

TAKEOFF RUNWAY 36: Climb on heading 001° to 1220, then as assigned by ATC, for vectors to BACEN, thence. . . .

. . . . on track 195° to BLOKR, then on (transition). Maintain 3000. Expect filed altitude 10 minutes after departure.

BEKKI TRANSITION (BLOKR7.BEKKI):

ROBERTS TRANSITION (BLOKR7.RBS):



NOTE: Chart not to scale.

BLOKR SEVEN DEPARTURE (RNAV)

(BLOKR7.BLOKR) 31OCT24

CHICAGO/AURORA, ILLINOIS
AURORA MUNI (A.R.R)

EC-3, 26 DEC 2024 to 23 JAN 2025

EC-3, 26 DEC 2024 to 23 JAN 2025