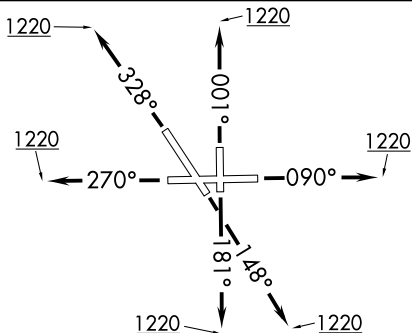
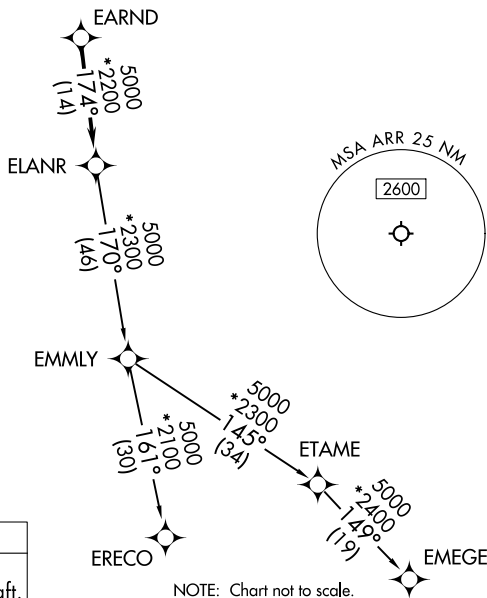
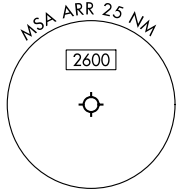


ELANR SEVEN DEPARTURE (RNAV)



**TOP ALTITUDE:
3000**

CHICAGO DEP CON
133.5 349.0
ATIS
125.85
GND CON
121.7
AURORA TOWER ★
120.6 (CTAF)



TAKEOFF MINIMUMS:

Rwys 9, 15, 18, 27, 33, 36: Standard.

NOTE: Turbojet departures maintain 250K until advised by ATC.

NOTE: EMLLY Transition: For aircraft inbound to Indianapolis Terminal Area, or as assigned by ATC.

- RNAV 1 - DME/DME/IRU or GPS.
- RADAR required.
- RADAR required for non-GPS equipped aircraft.

NOTE: Chart not to scale.

DEPARTURE ROUTE DESCRIPTION

- TAKEOFF RUNWAY 9:** Climb on heading 090° to 1220, then as assigned by ATC, for vectors to EARND, thence. . . .
- TAKEOFF RUNWAY 15:** Climb on heading 148° to 1220, then as assigned by ATC, for vectors to EARND, thence. . . .
- TAKEOFF RUNWAY 18:** Climb on heading 181° to 1220, then as assigned by ATC, for vectors to EARND, thence. . . .
- TAKEOFF RUNWAY 27:** Climb on heading 270° to 1220, then as assigned by ATC, for vectors to EARND, thence. . . .
- TAKEOFF RUNWAY 33:** Climb on heading 328° to 1220, then as assigned by ATC, for vectors to EARND, thence. . . .
- TAKEOFF RUNWAY 36:** Climb on heading 001° to 1220, then as assigned by ATC, for vectors to EARND, thence. . . .

. . . . on track 174° to ELANR, then on (transition), maintain 3000.
Expect filed altitude 10 minutes after departure.

- EMEGE TRANSITION (ELANR7.EMEGE):
- EMLLY TRANSITION (ELANR7.EMLLY):
- ERECO TRANSITION (ELANR7.ERECO):