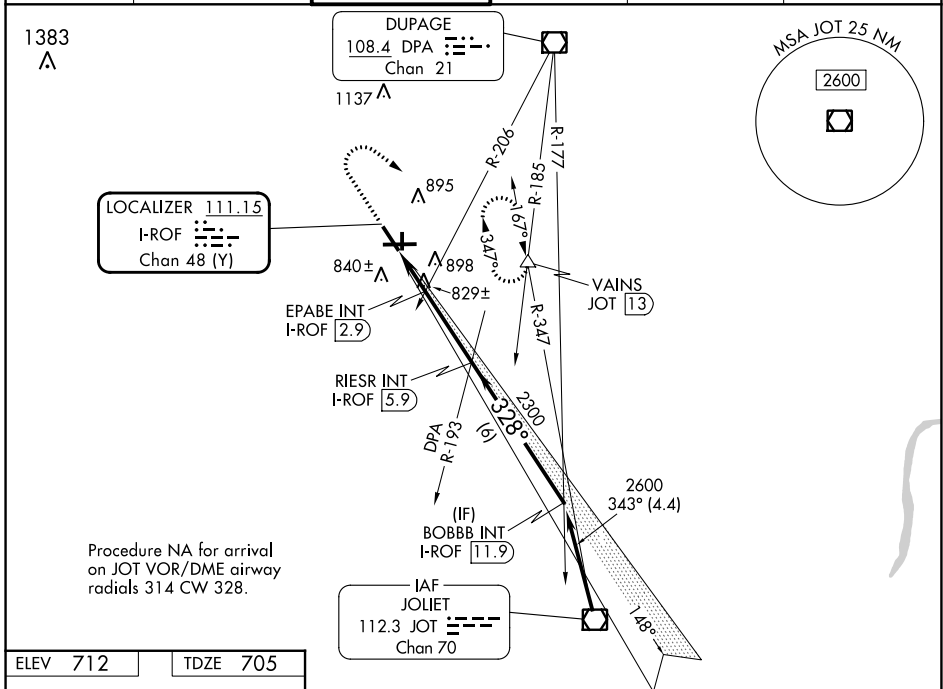


LOC/DME I-ROF 111.15 Chan 48 (Y)	APP CRS 328°	Rwy Idg TDZE Apt Elev	5503 705 712
--	------------------------	-----------------------------	---

LOC RWY 33

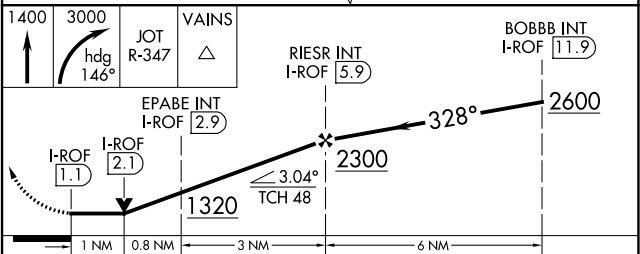
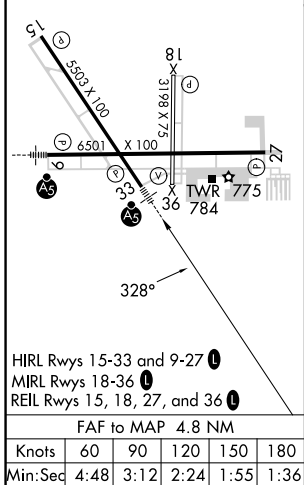
AURORA MUNI (A.R.R.)

<p>▽ For inop ALS, increase S-LOC 33 Cats C and D visibility to 1¼ SM and EPABE FIX minimums S-LOC 33 Cats C and D visibility to 1 SM.</p>	<p>MALSR </p> <p>MISSED APPROACH: Climb to 1400 then climbing right turn to 3000 on heading 146° and JOT VOR/DME R-347 to VAINS INT/JOT 13 DME and hold, continue climb-in-hold to 3000.</p>				
<p>ATIS 125.85</p>	<p>CHICAGO APP CON 133.5 349.0</p>	<p>AURORA TOWER* 120.6 (CTAF) 0</p>	<p>GND CON 121.7</p>	<p>CLNC DEL 121.7 (When tower closed)</p>	<p>UNICOM 122.95 123.5</p>



Procedure NA for arrival on JOT VOR/DME airway radials 314 CW 328.

ELEV 712	TDZE 705
----------	----------



CATEGORY	A	B	C	D
S-LOC 33	1320-½ 615 (700-½)		1320-1¾ 615 (700-1¾)	
C CIRCLING	1320-1 608 (700-1)		1320-1¾ 608 (700-1¾)	1320-2 608 (700-2)
EPABE FIX MINIMUMS (DUAL VOR RECEIVERS or DME REQUIRED)				
S-LOC 33	1080-½ 375 (400-½)		1080-⅝ 375 (400-⅝)	
C CIRCLING	1200-1 488 (500-1)		1300-1½ 588 (600-1½)	1320-2 608 (700-2)

EC-3, 26 DEC 2024 to 23 JAN 2025

EC-3, 26 DEC 2024 to 23 JAN 2025