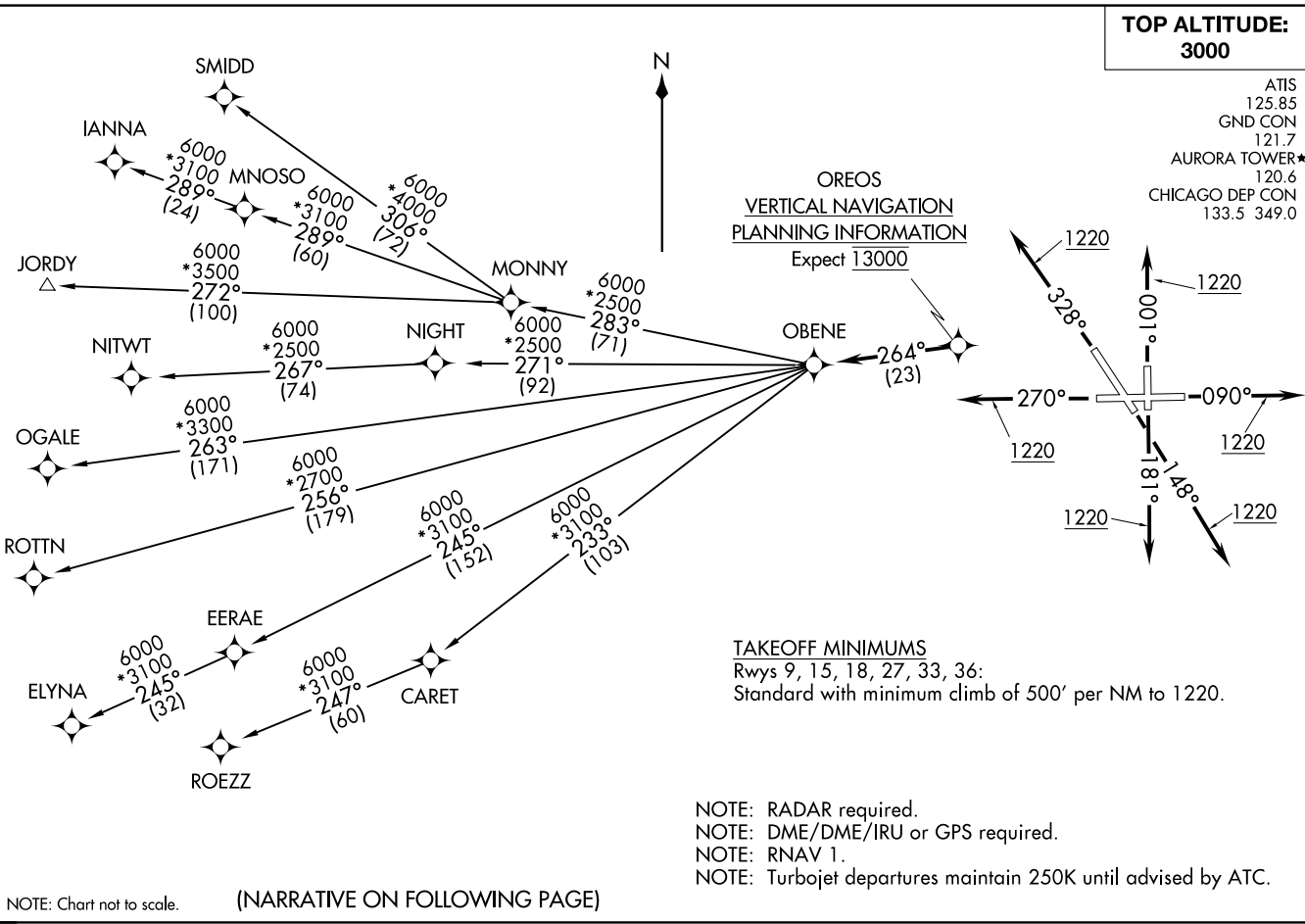


OBENE THREE DEPARTURE (RNAV)  
(OBENE3,OBENE) 08NOV18

CHICAGO/AURORA, ILLINOIS  
AURORA MUNI (ARR)



(OBENE3,OBENE) 18312  
OBENE THREE DEPARTURE (RNAV)  
AL-5103 (FAA)

AURORA MUNI (ARR)  
CHICAGO/AURORA, ILLINOIS



DEPARTURE ROUTE DESCRIPTION

TAKEOFF RUNWAY 9: Climb heading 090° to 1220, then continue climb on 090° heading or as assigned by ATC, for vectors to OREOS. Thence . . . .

TAKEOFF RUNWAY 15: Climb heading 148° to 1220, then continue climb on 148° heading or as assigned by ATC, for vectors to OREOS. Thence . . . .

TAKEOFF RUNWAY 18: Climb heading 181° to 1220, then continue climb on 181° heading or as assigned by ATC, for vectors to OREOS. Thence . . . .

TAKEOFF RUNWAY 27: Climb heading 270° to 1220, then continue climb on 270° heading or as assigned by ATC, for vectors to OREOS. Thence . . . .

TAKEOFF RUNWAY 33: Climb heading 328° to 1220, then continue climb on 328° heading or as assigned by ATC, for vectors to OREOS. Thence . . . .

TAKEOFF RUNWAY 36: Climb heading 001° to 1220, then continue climb on 001° heading or as assigned by ATC, for vectors to OREOS. Thence . . . .

. . . . on depicted route to OBENE, maintain 3000. Expect filed altitude 10 minutes after departure.

ELYNA TRANSITION (OBENE3.ELYNA)

IANNA TRANSITION (OBENE3.IANNA)

JORDY TRANSITION (OBENE3.JORDY)

MNOSO TRANSITION (OBENE3.MNOSO): For Minneapolis terminal area arrivals or assigned by ATC.

NITWT TRANSITION (OBENE3.NITWT)

OGALE TRANSITION (OBENE3.OGALE)

ROTTN TRANSITION (OBENE3.ROTTN)

ROEZZ TRANSITION (OBENE3.ROEZZ)

SMIDD TRANSITION (OBENE3.SMIDD)

EC-3, 26 DEC 2024 to 23 JAN 2025

EC-3, 26 DEC 2024 to 23 JAN 2025