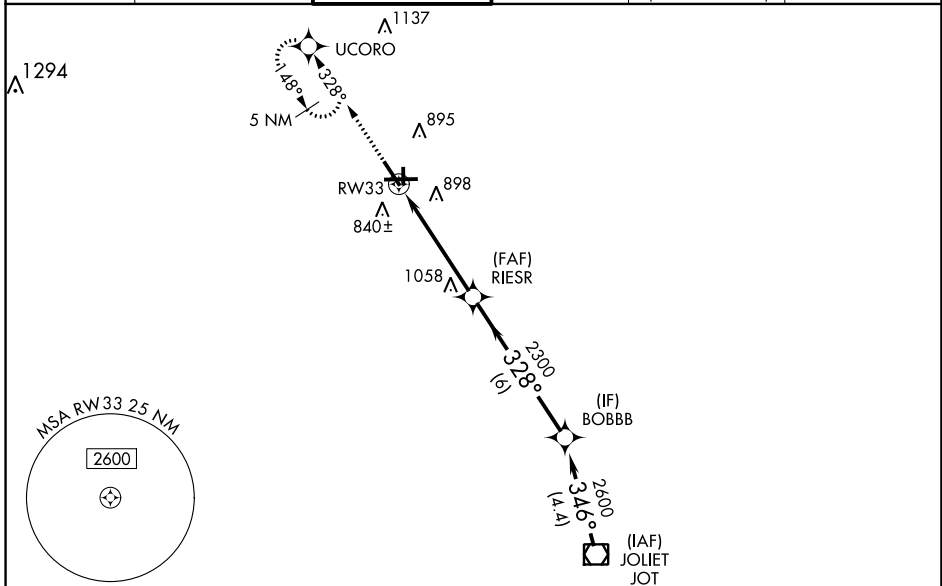


WAAS CH <b>49105</b> <b>W33A</b>	APP CRS <b>328°</b>	Rwy ldg <b>5503</b> TDZE <b>705</b> Apt Elev <b>712</b>
----------------------------------------	------------------------	---------------------------------------------------------------

# RNAV (GPS) RWY 33

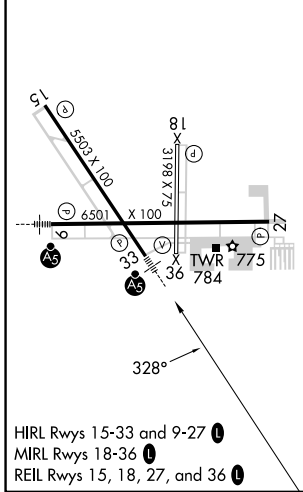
AURORA MUNI (A.R.R.)

RNP APCH - GPS.				MALSR 		MISSED APPROACH: Climb to 3000 direct UCORO and hold, continue climb-in-hold to 3000.						
For uncompensated Baro-VNAV systems, LNAV/VNAV NA below -16°C or above 54°C. For inop MALSR, increase LPV visibility to 1/4 SM all Cnts, LNAV Cnts A/B visibility to 1 SM.	ATIS <b>125.85</b>		CHICAGO APP CON <b>133.5 349.0</b>		AURORA TOWER * <b>120.6 (CTAF) 0</b>		GND CON <b>121.7</b>		CLNC DEL <b>121.7</b> <small>(When tower closed)</small>		UNICOM <b>122.95 123.5</b>	



ELEV 712	TDZE 705
----------	----------

Procedure NA for arrival on JOT VOR/DME airway radials 314 CW 328.



HIRL Rwy 15-33 and 9-27  
MIRL Rwy 18-36  
REIL Rwy 15, 18, 27, and 36

3000 UCORO				
*LNAV only.	RIESR 2300 → 328° → BOBBB 2600 → 346° → JOT VOR/DME 2600			
	*1.3 NM to RWY 33			GP 3.00° TCH 48
	1.3 NM	3.5 NM	6 NM	4.4 NM
CATEGORY	A	B	C	D
LPV DA	1042-3/4	337 (400-3/4)		
LNAV/VNAV DA	1194-1 1/4	489 (500-1 1/4)		
LNAV MDA	1140-3/4	435 (500-3/4)	1140-1	435 (500-1)
<input checked="" type="checkbox"/> CIRCLING	1200-1	488 (500-1)	1300-1 1/2	1320-2
			588 (600-1 1/2)	608 (700-2)

EC-3, 26 DEC 2024 to 23 JAN 2025

EC-3, 26 DEC 2024 to 23 JAN 2025