

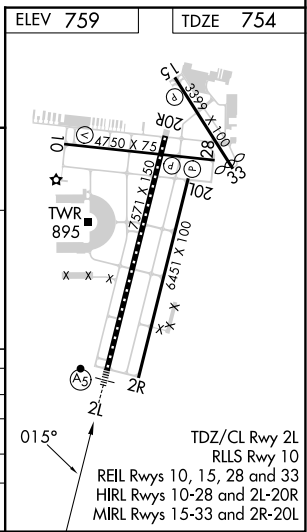
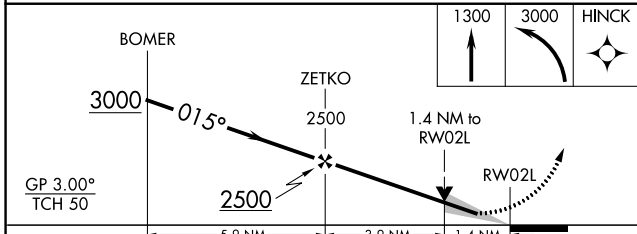
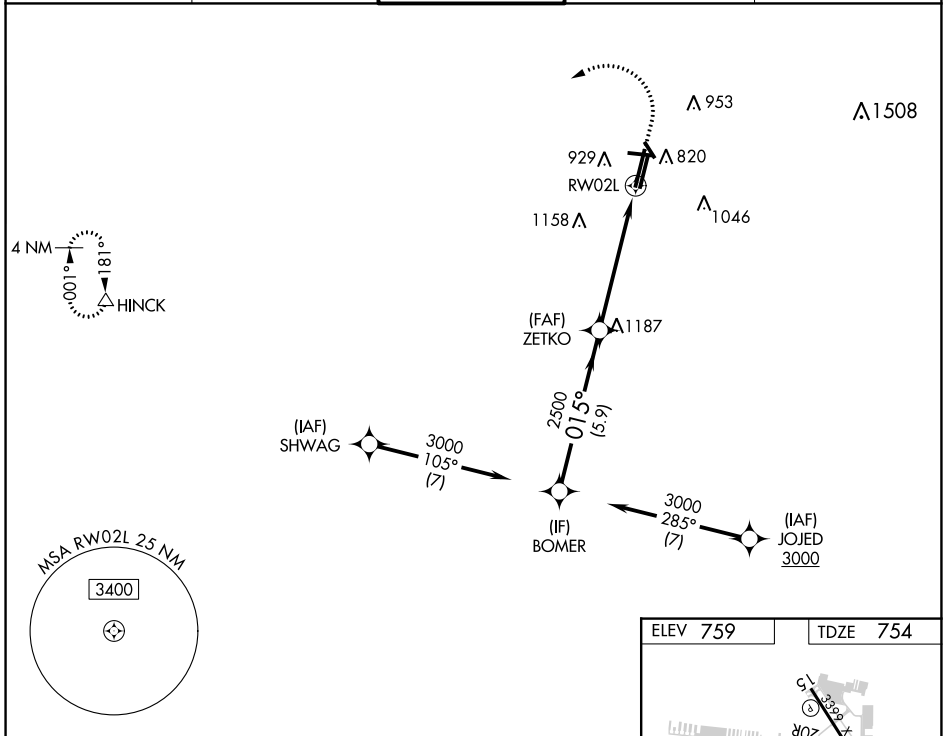
WAAS CH <b>86830</b> <b>W02B</b>	APP CRS <b>015°</b>	Rwy Idg TDZE Apt Elev	<b>7571</b> <b>754</b> <b>759</b>
--	------------------------	-----------------------------	---

# RNAV (GPS) RWY 2L

DUPAGE (DPA)

RNP APCH - GPS.	MALSRL 	MISSED APPROACH: Climb to 1300 then climbing left turn to 3000 direct HINCK and hold.
Circling Rwy 15, 28, 33 NA at night. For uncompensated Baro-VNAV systems, LNAV/VNAV NA below -20°C or above 54°C. For inop ALS, increase LNAV Cats C/D visibility to 1 3/8 SM.		

ATIS <b>132.075</b>	CHICAGO APP CON <b>133.5 349.0</b>	DUPAGE TOWER <b>120.9 257.8</b>	GND CON <b>121.8</b>	CLNC DEL <b>119.75</b>
------------------------	---------------------------------------	------------------------------------	-------------------------	---------------------------



CATEGORY	A	B	C	D
LPV DA		954/18	200 (200-1/2)	
LNAV/VNAV DA		1214/45	460 (500-7/8)	
LNAV MDA	1260/24	506 (600-1/2)	1260/55	506 (600-1)
CIRCLING	1260-1 501 (600-1)	1360-1 601 (700-1)	1460-2 701 (800-2)	1460-2 1/4 701 (800-2 1/4)

EC-3, 26 DEC 2024 to 23 JAN 2025

EC-3, 26 DEC 2024 to 23 JAN 2025