

WAAS CH 61212 W13A	APP CRS 129°	Rwy Idg TDZE Apt Elev	5500 2020 2032
--	------------------------	-----------------------------	---

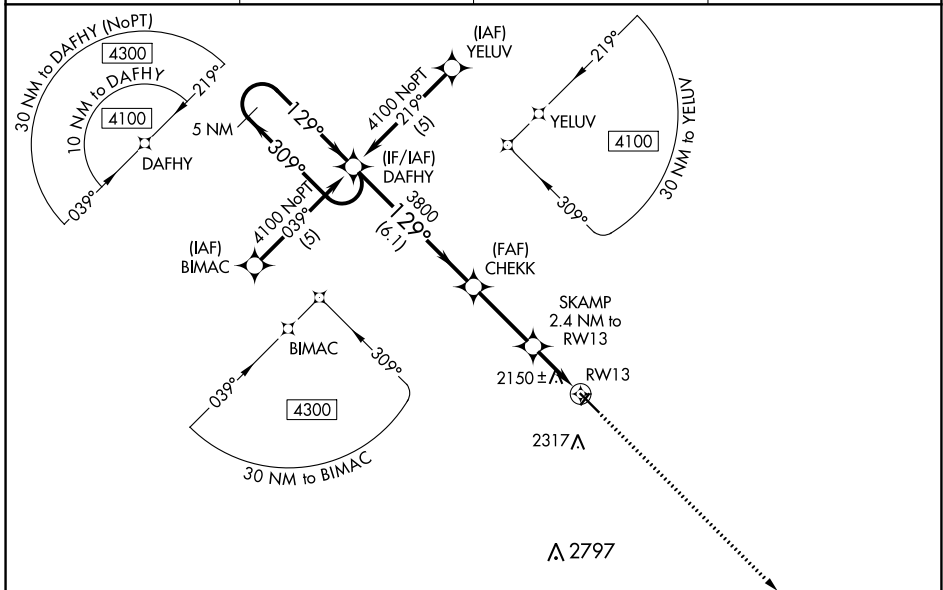
RNAV (GPS) RWY 13

WINNER RGNL (ICR)

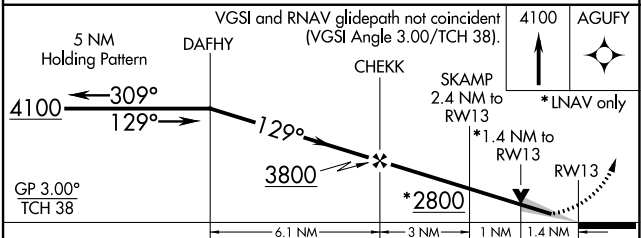
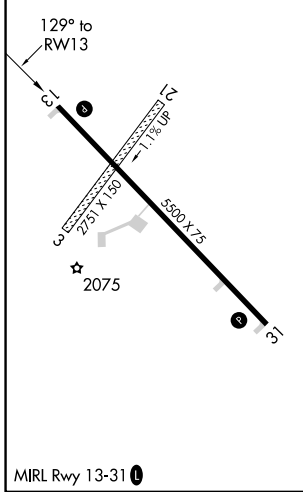
⚠ DME/DME RNP-0.3 NA. For uncompensated Baro-VNAV systems, LNAV/VNAV NA below -19°C (-2°F) or above 54°C (130°F). Baro-VNAV and VDP NA when using Valentine altimeter setting. When local altimeter setting not received, use Valentine, NE altimeter setting and increase all DA/MDA 240 feet; increase LPV all Cats visibility ¾ mile, LNAV/VNAV all Cats visibility 1 mile, LNAV Cat C visibility ¾ mile, Circling Cat B visibility ¼ mile and Cat C visibility 1 mile. Circling NA to Rwy's 3 and 21.

MISSED APPROACH: Climb to 4100 direct AGUFY and hold.

ASOS 126.775	MINNEAPOLIS CENTER 125.1 269.1	GCO 121.725	UNICOM 122.8 (CTAF) 0
------------------------	--	-----------------------	---------------------------------



ELEV 2032	TDZE 2020
-----------	-----------



CATEGORY	A	B	C	D
LPV DA		2270-1	250 (300-1)	NA
LNAV/VNAV DA		2456-1½	436 (500-1½)	NA
LNAV MDA	2480-1	460 (500-1)	2480-1¼ 460 (500-1¼)	NA
C CIRCLING	2580-1 548 (600-1)	2680-1 648 (700-1)	2680-1¾ 648 (700-1¾)	NA

NC-1, 26 DEC 2024 to 23 JAN 2025

NC-1, 26 DEC 2024 to 23 JAN 2025