

LOC/DME I-UYK <b>111.9</b> Chan <b>56</b>	APP CRS <b>092°</b>	Rwy Idg <b>7000</b> TDZE <b>695</b> Apt Elev <b>703</b>
---	------------------------	---

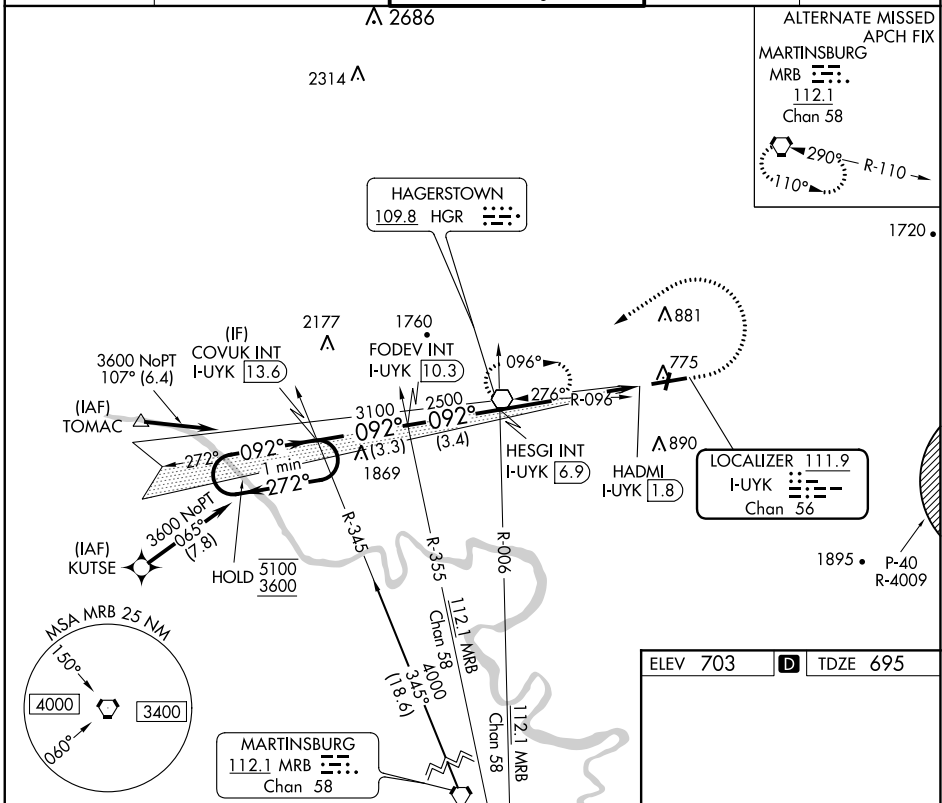
# ILS or LOC RWY 9

HAGERSTOWN RGNL/RICHARD A HENSON FLD (HGR)

RNP APCH - GPS.

MISSED APPROACH: Climb to 1400 then climbing left turn to 3600 direct HGR VOR and hold, continue climb-in-hold to 3600.

ASOS <b>126.375</b>	POTOMAC APP CON <b>126.825 239.025</b>	HAGERSTOWN TOWER * <b>120.3 (CTAF) 225.4</b>	GND CON <b>120.8</b>	UNICOM <b>122.95</b>
------------------------	---	---	-------------------------	-------------------------



One Minute Holding Pattern	COVUK INT I-UYK 13.6	FODEV INT I-UYK 10.3	1400	3600	HGR
5100 ← 272°	← 092° →	092°	3100	2500	HADMI I-UYK 1.8
3600					
GS 3.00°					
TCH 55					
CATEGORY	A	B	C	D	
S-ILS 9	895-3/4 200 (200-3/4)				
S-LOC 9	1000-1	305 (300-1)	1000-7/8	305 (300-7/8)	
CIRCLING	1160-1	457 (500-1)	1200-1 1/2	1300-2	
			497 (500-1 1/2)	597 (600-2)	

ELEV 703 TDZE 695

REIL Rwy 2 and 20  
REIL Rwy 9  
MIRL Rwy 2-20  
HIRL Rwy 9-27

FAF to MAP 5.1 NM

Knots	60	90	120	150	180
Min:Seq	5:06	3:24	2:33	2:02	1:42

# ILS or LOC RWY 9

NE-3, 26 DEC 2024 to 23 JAN 2025

NE-3, 26 DEC 2024 to 23 JAN 2025