


LOC I-HHR	APP CRS	Rwy Idg	4194
109.1	253°	TDZE	63
		Apt Elev	66

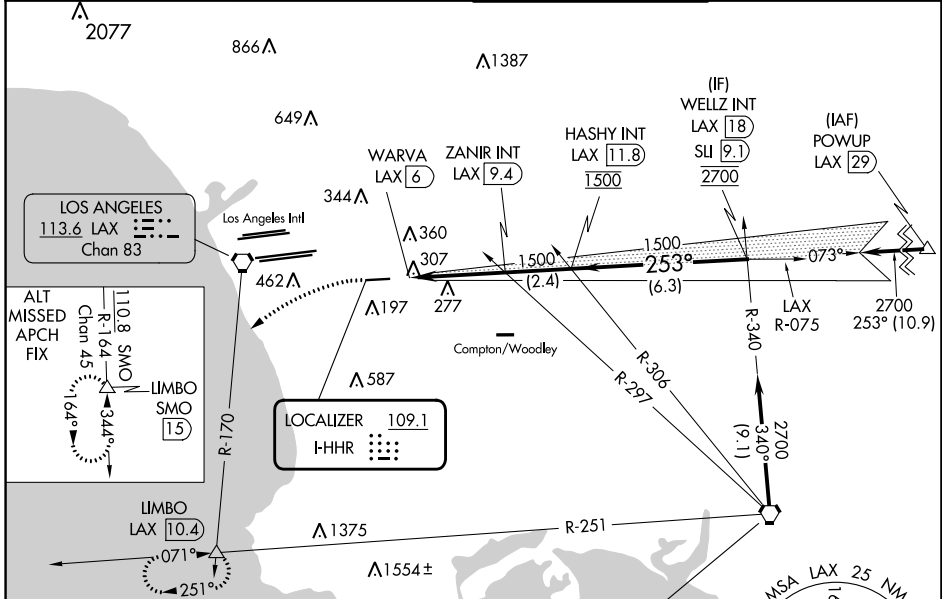
LOC RWY 25

JACK NORTHROP FLD/HAWTHORNE MUNI (HHR)

⚠ Inop table does not apply. Rwy 25 helicopter visibility reduction below 1 SM NA. Circling Rwy 7 NA at night. When local altimeter setting not received, use Los Angeles Intl altimeter setting. Simultaneous approach authorized with LAX 25L/R 24L/R. Circling NA north of Rwy 7-25. DME from LAX VORTAC. Simultaneous reception of I-HHR and LAX DME required.

ODALS

MISSED APPROACH: Climbing left turn to 3000 on heading 210° and LAX VORTAC R-170 to LIMBO INT/LAX 10.4 DME and hold.

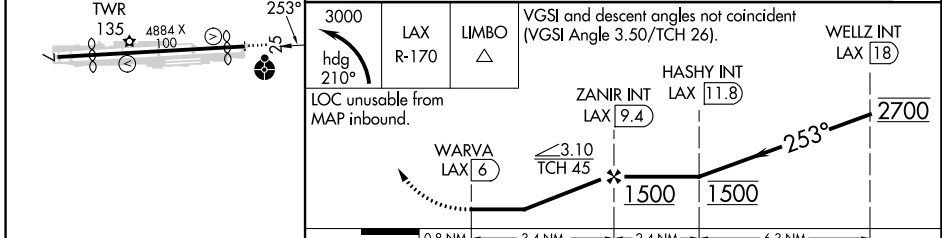
ATIS 118.4	SOCAL APP CON 124.9 269.0	HAWTHORNE TOWER* 121.1(CTAF) 0 257.8	GND CON 125.1
----------------------	-------------------------------------	--	-------------------------



ELEV 66	D	TDZE 63
---------	----------	---------



Procedure NA for arrivals at SLI VORTAC on V459-597 southeast bound.



MIRL Rwy 7-25 **0**

FAF to MAP 3.4 NM

Knots	60	90	120	150	180
Min:Sec	3:24	2:16	1:42	1:22	1:08

LOC RWY 25

SW-3, 26 DEC 2024 to 23 JAN 2025

SW-3, 26 DEC 2024 to 23 JAN 2025