

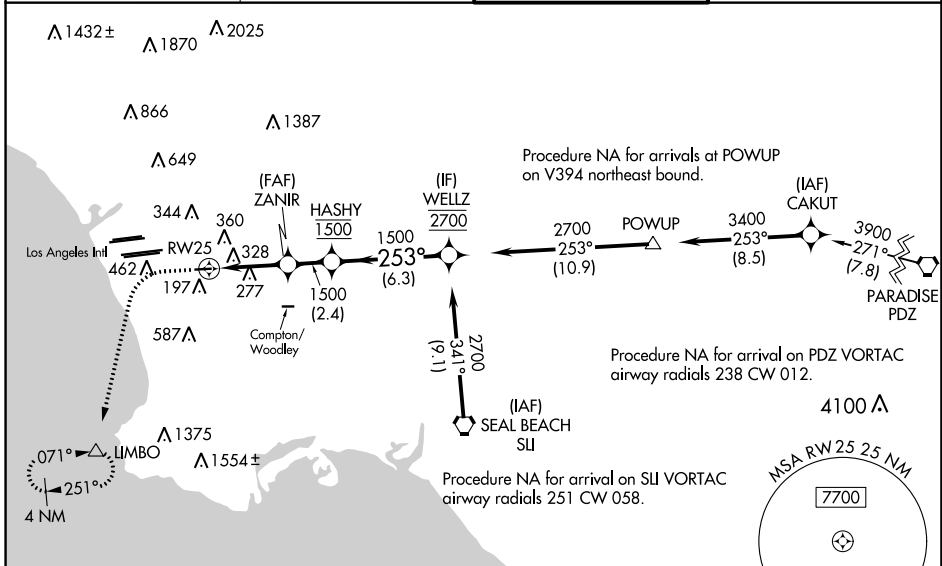
| | | |
|--|------------------------|---|
| WAAS CH 65825 W25A | APP CRS 253° | Rwy Idg 4194 TDZE 63 Apt Elev 66 |
|--|------------------------|---|

RNAV (GPS) RWY 25

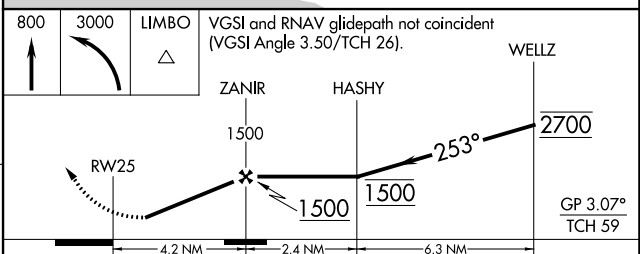
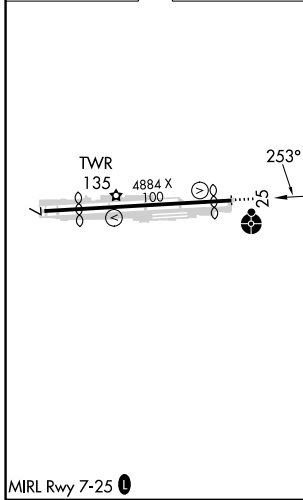
JACK NORTHROP FLD/HAWTHORNE MUNI (HHR)

| | | |
|---|--|--|
| RNP APCH - GPS. | | MISSED APPROACH: Climb to 800 then climbing left turn to 3000 direct LIMBO and hold, continue climb-in-hold to 3000. |
| ⚠ Circling NA north of Rwy 7-25. Rwy 25 helicopter visibility reduction below 1 SM NA. For uncompensated Baro-VNAV systems, LNAV/VNAV NA below 5°C or above 54°C. Inop table does not apply. Simultaneous approach authorized. LNAV procedure NA during simultaneous operations. Use of FD or AP required during simultaneous operations. Circling Rwy 7 NA at night. | | |

| | | | |
|----------------------|-------------------------------------|---|-------------------------|
| ATIS 118.4 | SOCAL APP CON 124.9 269.0 | HAWTHORNE TOWER ★ 121.1 (CTAF) 0 257.8 | GND CON 125.1 |
|----------------------|-------------------------------------|---|-------------------------|



| | |
|---------|------------------|
| ELEV 66 | D TDZE 63 |
|---------|------------------|



| CATEGORY | A | B | C | D |
|-------------------|-------|---------------------|----------------------------|---|
| LPV DA | | 577-1 $\frac{3}{8}$ | 514 (600-1 $\frac{3}{8}$) | |
| LNAV/VNAV DA | | 580-1 $\frac{3}{8}$ | 517 (600-1 $\frac{3}{8}$) | |
| LNAV MDA | 580-1 | 517 (600-1) | 580-1 $\frac{3}{8}$ | 517 (600-1 $\frac{3}{8}$) |
| C CIRCLING | 620-1 | 554 (600-1) | 780-2 714 (800-2) | 780-2 $\frac{1}{4}$ 714 (800-2 $\frac{1}{4}$) |

SW-3, 26 DEC 2024 to 23 JAN 2025

SW-3, 26 DEC 2024 to 23 JAN 2025