

APP CRS	Rwy Idg	<b>4421</b>
<b>315°</b>	TDZE	<b>667</b>
	Apt Elev	<b>674</b>

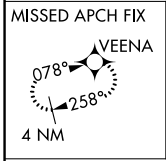
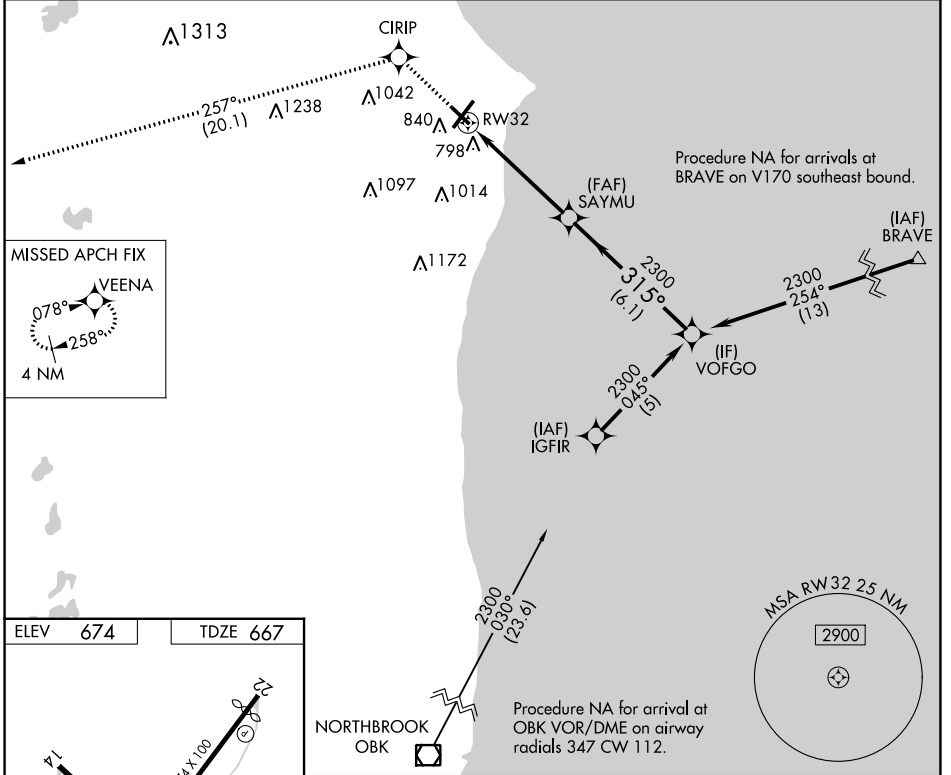
# RNAV (GPS) RWY 32

BATTEN INTL (RAC)

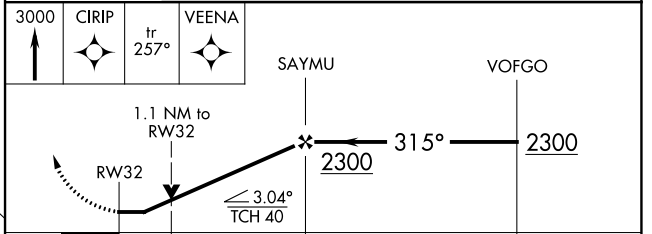
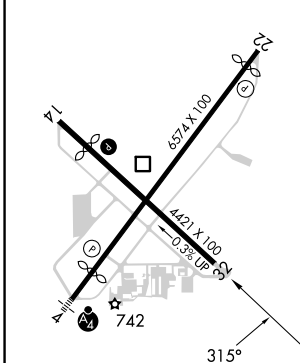
**▼** DME/DME RNP-0.3 NA. VDP NA when using General Mitchell Intl altimeter setting.  
**▲** When local altimeter setting not received, use General Mitchell Intl altimeter setting:  
 Increase all MDA 40 feet and visibility Cat C and D ¼ SM. Rwy 32 helicopter  
 visibility reduction below ¾ SM NA. Circling Rwy 14 NA at night.

**MISSED APPROACH:**  
 Climb to 3000 direct  
 CIRIP and track 257°  
 to VEENA and hold.

ASOS <b>121.425</b>	MILWAUKEE APP CON <b>135.875 317.725</b>	CLNC DEL <b>120.15</b>	UNICOM <b>123.075 (CTAF) 0</b>
------------------------	---	---------------------------	-----------------------------------



ELEV 674	TDZE 667
----------	----------



	A	B	C	D
CATEGORY	A	B	C	D
LNAV MDA	1060-1	393 (400-1)	1060-1½	393 (400-1½)
<b>C</b> CIRCLING	1140-1 466 (500-1)	1160-1 486 (500-1)	1380-2 706 (800-2)	1380-2¼ 706 (800-2¼)

EC-3, 26 DEC 2024 to 23 JAN 2025

EC-3, 26 DEC 2024 to 23 JAN 2025