

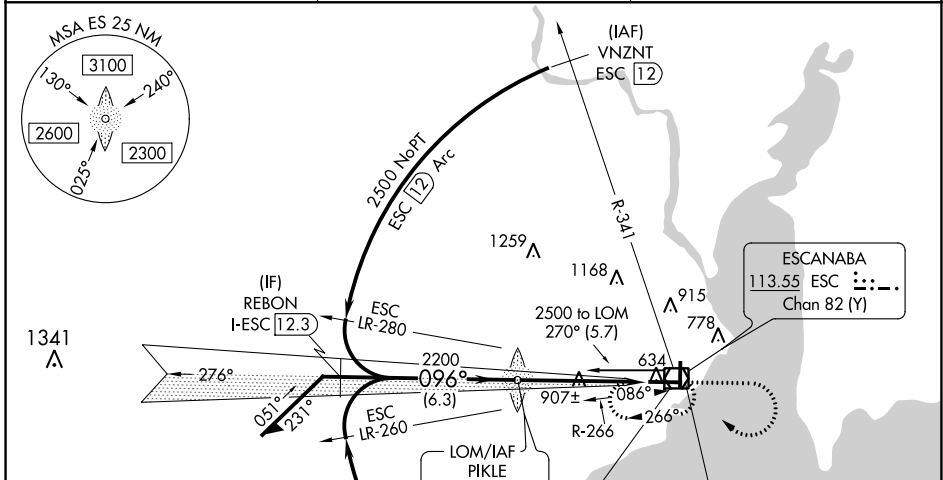
LOC/DME I-ESC 109.3 Chan 30	APP CRS 096°	Rwy ldg 6498 TDZE 609 Apt Elev 609
--	------------------------	---

ILS or LOC RWY 10

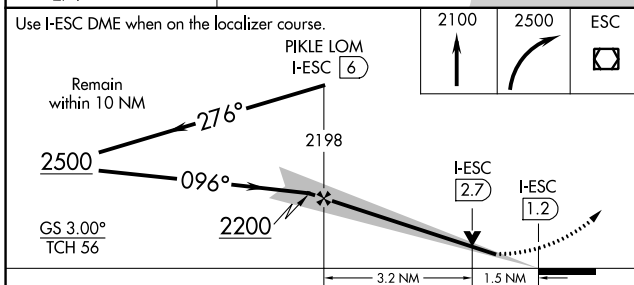
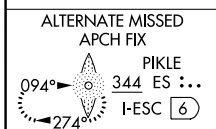
DELTA COUNTY (ESC)

ADF or DME required for procedure entry. ADF or DME required for LOC only.		MALSR 	MISSED APPROACH: Climb to 2100 then climbing right turn to 2500 direct ESC VOR/DME and hold.
--	--	-----------	---

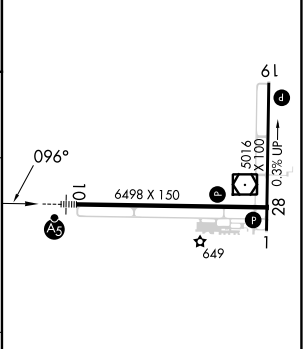
AWOS-3PT 121.425	MINNEAPOLIS CENTER 127.65	UNICOM 122.8 (CTAF)
----------------------------	-------------------------------------	-------------------------------



CAUTION: Magnetic disturbances of as much as 14° exist at ground level at Escanaba.



ELEV 609	TDZE 609
----------	----------



CATEGORY	A	B	C	D
S-ILS 10	809-½ 200 (200-½)			
S-LOC 10	1160-½	551 (600-½)	1160-1½	551 (600-1½)
CIRCLING	1160-1	551 (600-1)	1280-2 671 (700-2)	1480-2¾ 871 (900-2¾)

HIRL Rwy 10-28	MIRL Rwy 1-19	REIL Rws 1 and 28			
FAF to MAP 4.8 NM					
Knots	60	90	120	150	180
Min:Sec	4:48	3:12	2:24	1:55	1:36

EC-1, 26 DEC 2024 to 23 JAN 2025

EC-1, 26 DEC 2024 to 23 JAN 2025