

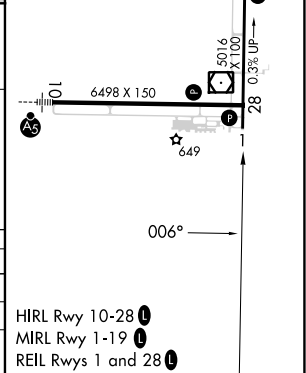
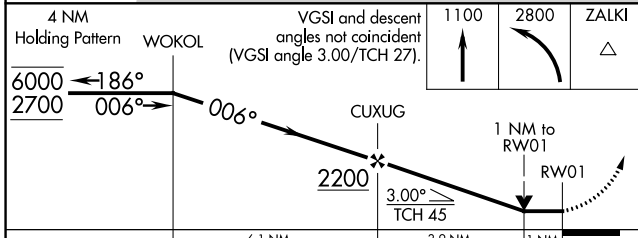
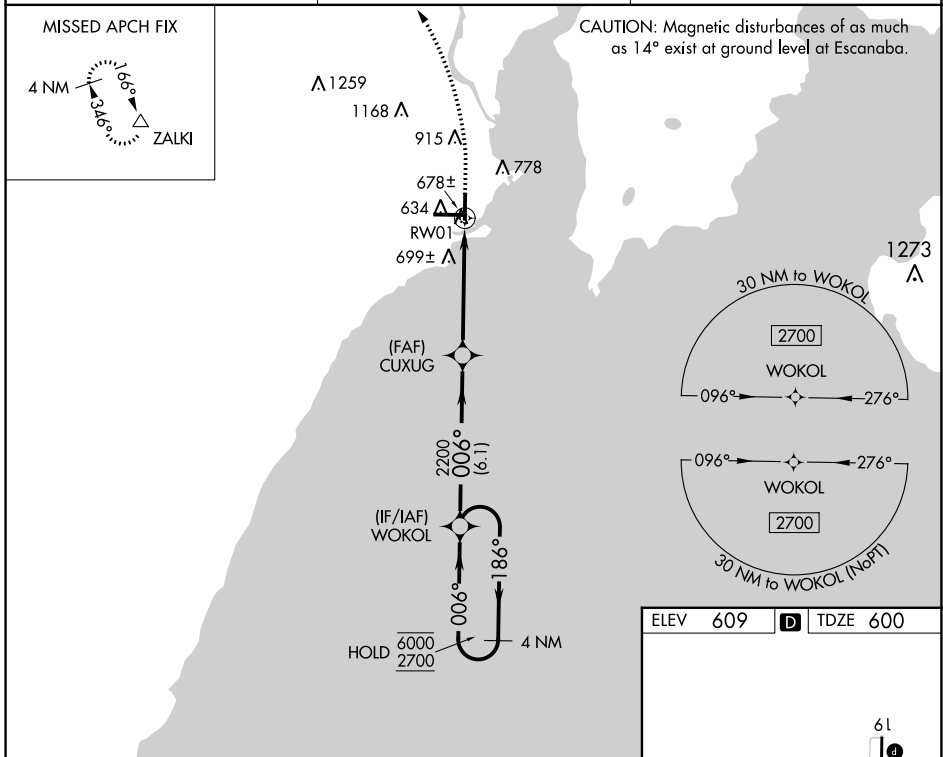
WAAS CH <b>69333</b> <b>W01A</b>	APP CRS <b>006°</b>	Rwy Idg TDZE Apt Elev	<b>5015</b> <b>600</b> <b>609</b>
--	------------------------	-----------------------------	---

# RNAV (GPS) RWY 1

DELTA COUNTY (ESC)

RNP APCH - GPS.	MISSED APPROACH: Climb to 1100, then climbing left turn to 2800 direct ZALKI and hold.
Rwy 1 helicopter visibility reduction below 3/4 SM NA.	

AWOS-3PT <b>121.425</b>	MINNEAPOLIS CENTER <b>127.65</b>	UNICOM <b>122.8 (CTAF) 0</b>
----------------------------	-------------------------------------	---------------------------------



CATEGORY	A	B	C	D
LP MDA		940-1	340 (400-1)	
LNAV MDA		960-1	360 (400-1)	
CIRCLING	1060-1 451 (500-1)	1080-1 471 (500-1)	1280-2 671 (700-2)	1480-2 3/4 871 (900-2 3/4)

HIRL Rwy 10-28 0  
MIRL Rwy 1-19 0  
REIL Rwy 1 and 28 0

EC-1, 26 DEC 2024 to 23 JAN 2025

EC-1, 26 DEC 2024 to 23 JAN 2025