

WAAS CH 70511 W10A	APP CRS 096°	Rwy ldg 6498 TDZE 609 Apt Elev 609
--	------------------------	---

RNAV (GPS) RWY 10

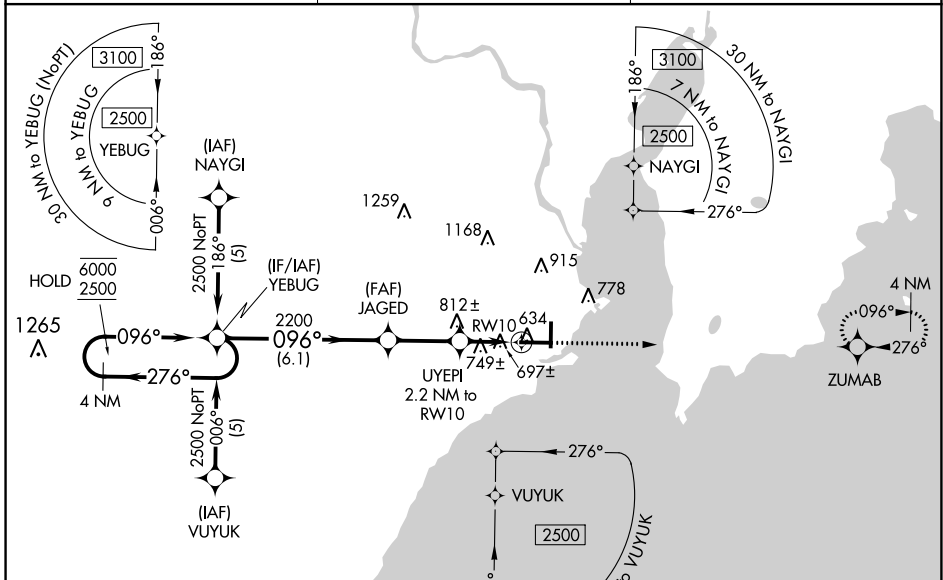
DELTA COUNTY (ESC)

RNP APCH - GPS.

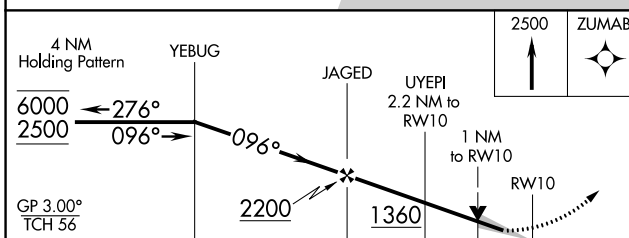
MALSRL MISSED APPROACH: Climb to 2500 direct ZUMAB and hold.

For uncompensated Baro-VNAV systems, LNAV/VNAV NA below -16°C or above 54°C. For inop ALS, increase LNAV/VNAV visibility to 1 SM.

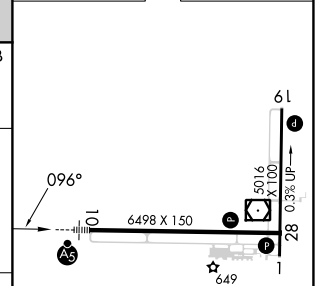
AWOS-3PT 121.425	MINNEAPOLIS CENTER 127.65	UNICOM 122.8 (CTAF) 📵
----------------------------	-------------------------------------	--



CAUTION: Magnetic disturbances of as much as 14° exist at ground level at Escanaba.



ELEV 609	D TDZE 609
----------	-------------------



CATEGORY	A	B	C	D
LPV DA		809-1/2	200 (200-1/2)	
LNAV/VNAV DA		967-5/8	358 (400-3/8)	
LNAV MDA	1000-1/2	391 (400-1/2)	1000-5/8	391 (400-5/8)
C CIRCLING	1060-1 451 (500-1)	1080-1 471 (500-1)	1280-2 671 (700-2)	1480-2 3/4 871 (900-2 3/4)

HIRL Rwy 10-28 **📵**
MIRL Rwy 1-19 **📵**
REIL Rws 1 and 28 **📵**

EC-1, 26 DEC 2024 to 23 JAN 2025

EC-1, 26 DEC 2024 to 23 JAN 2025