

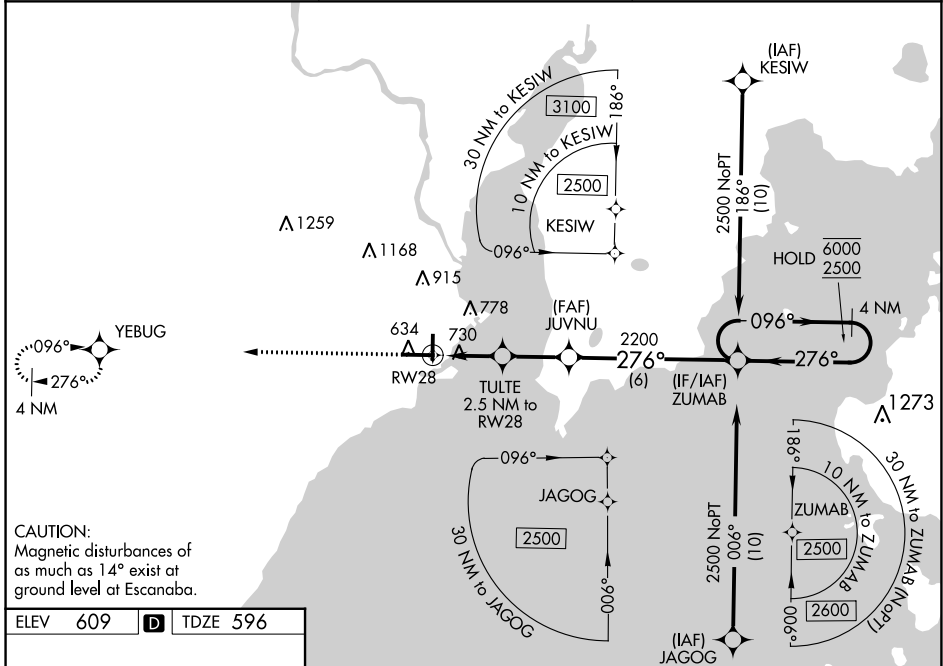
WAAS CH <b>63128</b> <b>W28A</b>	APP CRS <b>276°</b>	Rwy Idg TDZE Apt Elev	<b>6498</b> <b>596</b> <b>609</b>
--	------------------------	-----------------------------	---

# RNAV (GPS) RWY 28

DELTA COUNTY (E/SC)

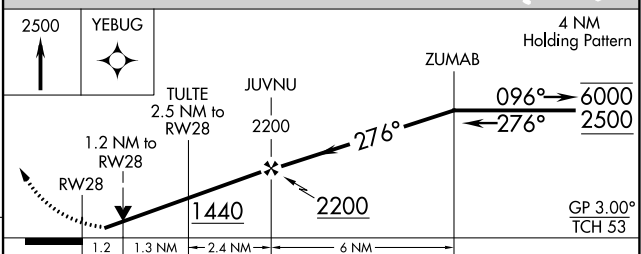
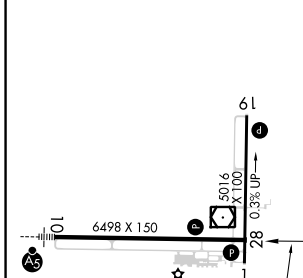
RNP APCH - GPS.	MISSED APPROACH: Climb to 2500 direct YEBUG and hold.
<p><b>⚠</b> Rwy 28 helicopter visibility reduction below 3/4 SM NA. For uncompensated Baro-VNAV systems, LNAV/VNAV NA below -16°C or above 54°C.</p>	

AWOS-3PT <b>121.425</b>	MINNEAPOLIS CENTER <b>127.65</b>	UNICOM <b>122.8 (CTAF) 0</b>
----------------------------	-------------------------------------	---------------------------------



**CAUTION:**  
Magnetic disturbances of  
as much as 14° exist at  
ground level at Escanaba.

ELEV 609	<b>D</b>	TDZE 596
----------	----------	----------



CATEGORY	A	B	C	D
LPV DA	846-1		250 (300-1)	
LNAV/VNAV DA	1076-1 5/8		480 (500-1 5/8)	
LNAV MDA	1040-1	444 (500-1)	1040-1 3/8	444 (500-1 3/8)
<b>C</b> CIRCLING	1060-1 451 (500-1)	1080-1 471 (500-1)	1280-2 671 (700-2)	1480-2 3/4 871 (900-2 3/4)

HIRL Rwy 10-28 **0**  
MIRL Rwy 1-19 **0**  
REIL Rwy 1 and 28 **0**

EC-1, 26 DEC 2024 to 23 JAN 2025

EC-1, 26 DEC 2024 to 23 JAN 2025