

SAN CLEMENTE ISLAND, CALIFORNIA

# HI-TACAN Z RWY 24

SAN CLEMENTE ISLAND NALF (FREDERICK SHERMAN FLD) (KNUC)

TACAN NUC Chan <b>123</b>	APCH CRS <b>236°</b>	Rwy Idg TDZE <b>9301 184</b>	Arprt Elev <b>184</b>
------------------------------	-------------------------	---------------------------------	--------------------------

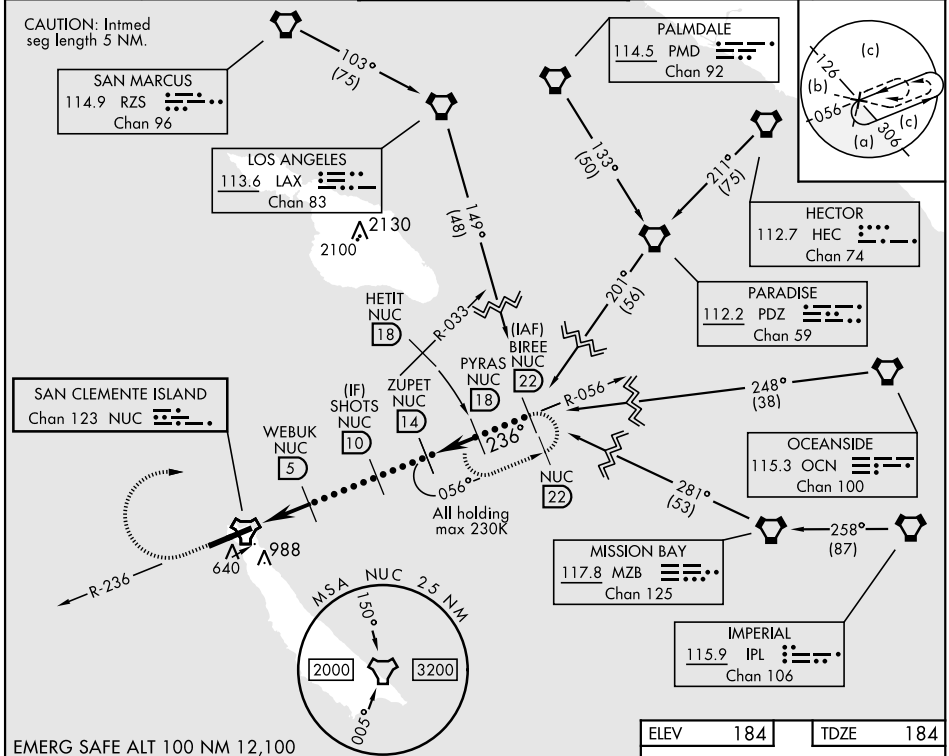
[USN]

MISSED APPROACH: Climb to 1500 via NUC TACAN R-236 then climbing right turn to 4000 via NUC R-033 to HETIT. Then arc NE of the NUC TACAN via the 18 DME arc to PYRAS and hold.

\*Circling not authorized south of Rwy 6-24.

ATIS ★ <b>268.6</b>	SAN CLEMENTE APP CON <b>127.05 292.15</b>	SAN CLEMENTE ISLAND TOWER ★ <b>126.75 278.8</b>	GND CON <b>0 119.55 251.05</b>	ASR/PAR
------------------------	--	--	-----------------------------------	---------

CAUTION: Intimed seg length 5 NM.

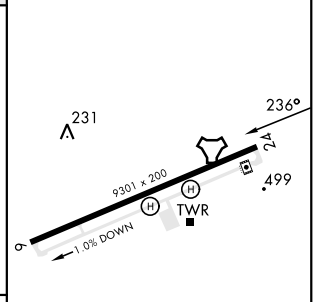
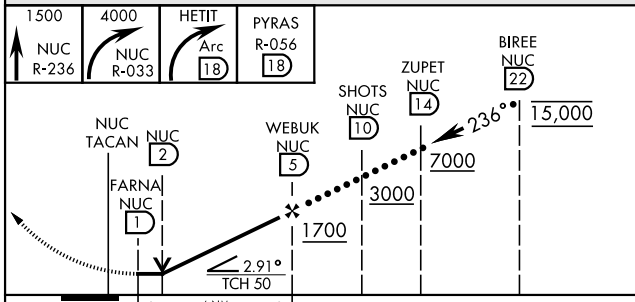


SW-3, 26 DEC 2024 to 23 JAN 2025

SW-3, 26 DEC 2024 to 23 JAN 2025

EMERG SAFE ALT 100 NM 12,100

ELEV	184	TDZE	184
------	-----	------	-----



CATEGORY	C	D	E
S-24	780-1 $\frac{3}{4}$	596 (600-1 $\frac{3}{4}$ )	
CIRCLING*	780-1 $\frac{3}{4}$ 596 (600-1 $\frac{3}{4}$ )	780-2 596 (600-2)	

REIL Rwy 6	
REIL Rwy 24	0
HIRL Rwy 6-24	0

SAN CLEMENTE ISLAND, CALIFORNIA  
Orig 24FEB22

33°01'N-118°35'W

SAN CLEMENTE ISLAND NALF (KNUC)  
(FREDERICK SHERMAN FLD)

# HI-TACAN Z RWY 24