

SAN CLEMENTE ISLAND, CALIFORNIA

RNAV (GPS) RWY 24

WAAS CH 87812 W24A	APCH CRS 235°	Rwy ldg TDZE 184 Arprt Elev 184
---------------------------------	-------------------------	-----------------------------------------------------

-(USN)

SAN CLEMENTE ISLAND NALF (FREDERICK SHERMAN FLD) (KNUC)

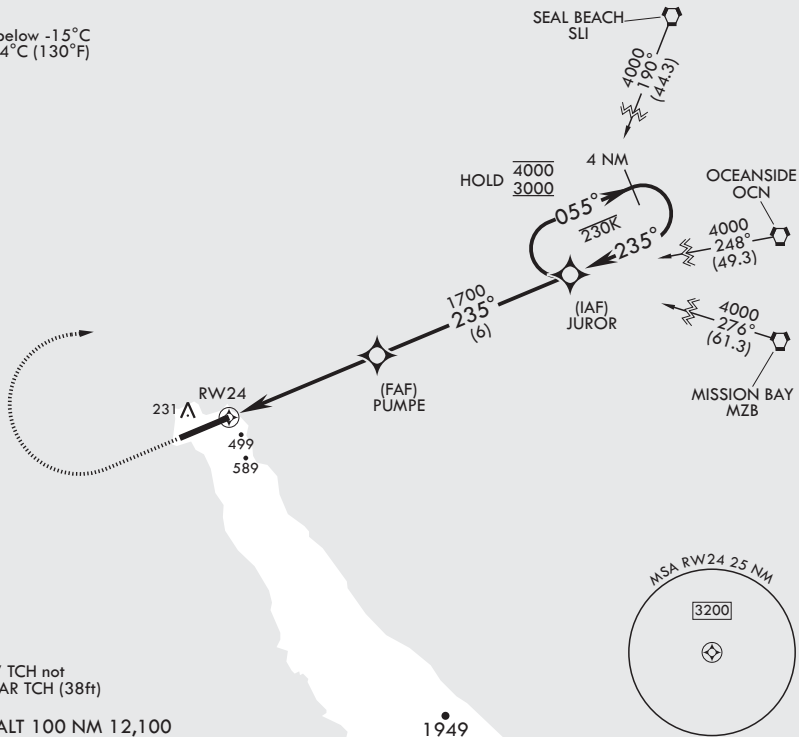
RNP APCH

MISSED APPROACH: Climb to 1500, then climbing right turn to 3000 direct JUROR and hold.

⚠ * Circling not authorized S of Rwy 6-24.

ATIS* 268.6	SAN CLEMENTE APP CON 127.05 292.15	TOWER* 126.75 278.8	GND CON 119.55 251.05	ASR/PAR
-----------------------	----------------------------------------------	-------------------------------	---------------------------------	---------

Baro-VNAV NA below -15°C (5°F) or above 54°C (130°F)



CAUTION: RNAV TCH not coincident with PAR TCH (38ft)

EMERG SAFE ALT 100 NM 12,100

1500 crs 235°	3000	JUROR	ELEV 184	TDZE 184
CATEGORY	A	B	C	D
LPV DA	384-¾		200	(200-¾)
LNAV/VNAV DA	632-1¾ 448 (500-1¾)	641-1¾ 457 (500-1¾)	649-1¾ 465 (500-1¾)	661-1¾ 477 (500-1¾)
LNAV MDA	760-1	576 (600-1)	760-1¾	576 (600-1¾)
CIRCLING*	780-1	596 (600-1)	780-1¾ 596 (600-1¾)	780-2 596 (600-2)
REIL Rwy 6 REIL Rwy 24 HIRL all Rwy's				

SAN CLEMENTE ISLAND, CALIFORNIA

SAN CLEMENTE ISLAND NALF (FREDERICK SHERMAN FLD) (KNUC)

Amdt 5 24FEB22

33°01'N - 118°35'W

RNAV (GPS) RWY 24

SW-3, 26 DEC 2024 to 23 JAN 2025

SW-3, 26 DEC 2024 to 23 JAN 2025