

SAN CLEMENTE ISLAND, CALIFORNIA

# TACAN Y RWY 24

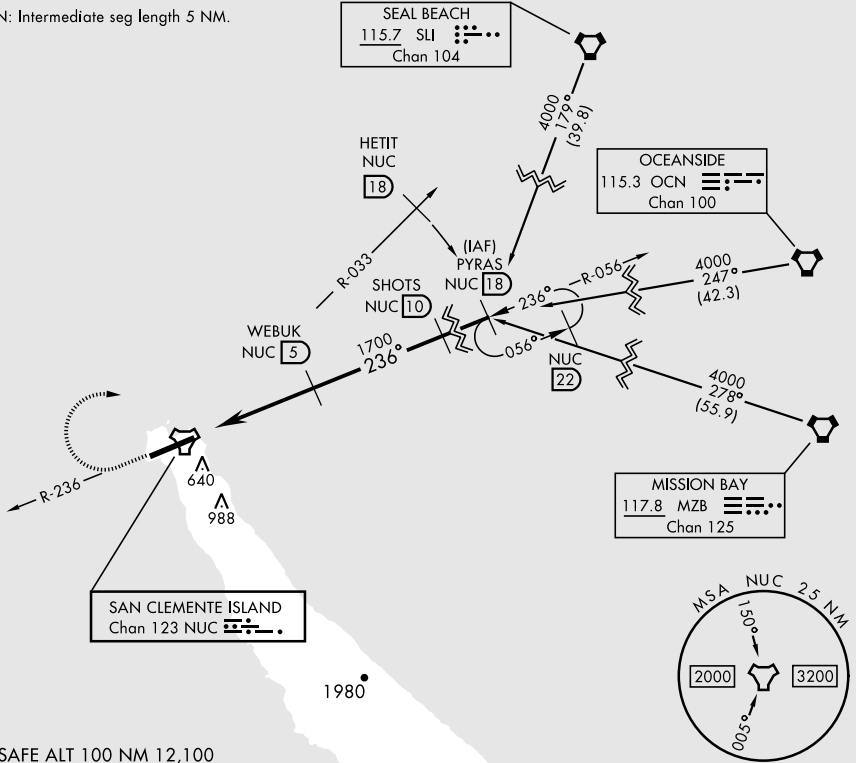
TACAN NUC Chan <b>123</b>	APCH CRS <b>236°</b>	Rwy ldg TDZE <b>184</b> Arprt Elev <b>184</b>	<b>9301</b>
------------------------------	-------------------------	--	-------------

[USN]  
SAN CLEMENTE ISLAND NALF (FREDERICK SHERMAN FLD) (KNUC)

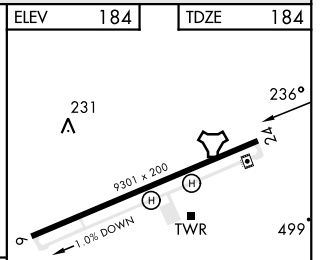
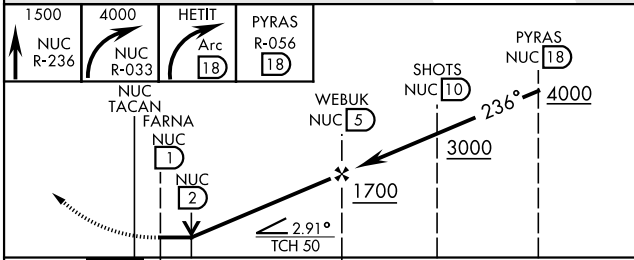
▼ \* Circling not authorized S of Rwy 6-24.  
MISSED APPROACH: Climb to 1500 via NUC TACAN R-236 then climbing right turn to 4000 via NUC R-033 to HETIT. Then arc NE of NUC TACAN via the 18 DME arc to PYRAS and hold.

ATIS ★ <b>268.6</b>	SAN CLEMENTE APP CON <b>127.05 292.15</b>	SAN CLEMENTE ISLAND TOWER ★ <b>126.75 278.8</b>	GND CON <b>0 119.55 251.05</b>	ASR/PAR
------------------------	--	--	-----------------------------------	---------

CAUTION: Intermediate seg length 5 NM.



EMERG SAFE ALT 100 NM 12,100



CATEGORY	A	B	C	D
S-24	780-1 596 (600-1)		780-1 $\frac{3}{4}$ 596 (600-1 $\frac{3}{4}$ )	
CIRCLING*	780-1 596 (600-1)		780-1 $\frac{3}{4}$ 596 (600-1 $\frac{3}{4}$ )	780-2 596 (600-2)

ELEV 184 TDZE 184  
REIL Rwy 6  
REIL Rwy 24  
HIRL Rwy 6-24

SAN CLEMENTE ISLAND, CALIFORNIA  
Orig 24FEB22

SAN CLEMENTE ISLAND NALF (FREDERICK SHERMAN FLD) (KNUC)  
33°01'N-118°35'W

# TACAN Y RWY 24

SW-3, 26 DEC 2024 to 23 JAN 2025

SW-3, 26 DEC 2024 to 23 JAN 2025